

Bench R.J. *Sound transmission to the human foetus through the maternal abdominal wall.* J.Genet. Psych 1968; 113: 85- 87.

Bluestone CD, Berry QC, Paradise JL. *Audiometry and Tympanometry in relation to middle ear effusions in children.* Laryngoscope 1973; 83: 594 – 603.

Boothroyd A. *Statement of the problem.* In: Hearing Impairment in young children. Prentice – Hall, Inc., Englewood Cliffs, N.J. 1982 ; 2 – 11.

Bonfils P, Uziel A, Pujol R. *Screening for Auditory dysfunction in infants by evoked otoacoustic emissions.* Arch Otolaryngol Head Neck Surg 1988; 114: 887- 90.

Boring. *What and how we hear.* In: Newby HA, Audiology, 4<sup>th</sup>.edn. Prentice – Hall.Inc;1979:57

Brackbill Y, Adams G, Crowell DH, and Gray ML. *Arousal level in neonates and Preschool children under continuous auditory stimulation.* J. Exp. Child Psychol. 1966; 4: 178- 188.

Brooks D. *An objective method for detecting fluid in the middle ear.* International Audiology 1968; 7: 280 – 286.

Brooks DN. *Electroacoustic impedance bridge studies on normal ears of children.* J Speech Hear Res 1971; 14: 247 – 253.

Buchwald. *Intracranally recorded auditory auditory nerve response in man.* Arch Otolaryngol 1983;108,77-82.

Chang KW, Vohr BR. *External and middle ear status related to Evoked otoacoustic emissions in neonates.* Arch. Otolaryngol Head neck surg 1993;119: 276- 82.

Chang KW, Vohr BR, Norton SJ, Lekas MD. *External canal and middle ear status in full term neonates related to evoked otoacoustic emissions.*

Paediatrics Res 1992; 31: 89.

Choi SC, Pafitis IA, Herer GR, ZalZal GH, Patel KM. *Clinical applications of Transiently evoked otoacoustic emissions in the Pediatric population.* The annals of Otolaryngology, Rhinology, & Laryngology 1999; 108: 132 – 138.

Cox JC, Hack M, and Metz DA. *Auditory Brainstem Response abnormalities in the very low birthweight infant. Incidence and risk factors.* Ear Hear 1984; 5: 47 – 51.

Davis AC. *A public health perspective on childhood hearing impairment.* in : MC Cormick B,ed Paediatric Audiology 0- 5 yrs (2<sup>nd</sup> ed). London: Whurr Publishers, 1993: 1 - 41.

Davidson P, Hyde M, Alberti P. *Epidemiologic patterns in childhood hearing loss.* A review. Int J of Paed Otolaryngol 1989; 17: 239 – 266.

Davis AC, Woods. *The epidemiology of childhood hearing impairment. Factors relevant to planning of services.* Br J Audiol 1992; 26: 77 – 90.

Downs MP, & Sterritt GM. *A guide to newborn and infant hearing screening programs.* Archives of Otolaryngology 1967; 85: 15 - 22.

*Early identification of hearing impairment in infants and young children.* NIH Consens Statement online 1993 Mar 1 -3;11(1):1 - 24.

Elliot GB, and Elliot KA. *Some pathological, radiological and clinical implications of the precocious development of the human ear.* Laryngoscope 1964; 74: 1160 - 1171.

- El- Refaie A, Parker DJ, Bamford JM. *Otoacoustic emission versus ABR screening. The effect of external and middle ear abnormalities in a group of SCBU neonates*. Br J Audiol 1996; 30: 3 – 8.
- Feinmesser M, Tell L, Levi H. *Follow up of 4000 infants screened for hearing deficit*. Audiology 1982; 21: 197 – 203.
- Feldman A. *Tympanometry procedures, interpretation and variables*. In: A. Feldman & L. A. Wilber, eds. Acoustic Impedance and admittance – The measurement of middle ear function. Baltimore: Williams & Wilkins, 1975: 103 – 155.
- Fortnum H, Davis A. *Epidemiology of permanent childhood hearing impairment in trend region, 1985 – 1993*, Br J Audiol 1997; 37: 409 – 46.
- Furth HG. *A comparison of reading test norms of deaf and hearing children*. Ann Deaf 1966; 111: 461 – 462.
- Greenberg MT& Marum RS. *Attachment in profoundly deaf Pre- school children, unpublished paper*,
- Hecox K, Galambos R. *Brainstem Auditory evoked responses in human infants and adults*. Arch otolaryngol Head Neck Surg 1974; 99: 30- 33.
- Helmoltz. *What and how we hear*. In: Newby HA, 4<sup>th</sup> ed. Audiology. Prentice-Hall, Inc; 1979: 46- 59
- Holm & Kunze. *Effect of chronic otitis media on language and speech development*. Pediatrics 1969; 43: 833- 839.
- Jerger J. *Clinical experience with impedance audiometry*. Arch otolaryngol 1970; 92: 311- 324.

Jérger S, Jerger J, Mauldin L, Segal P. *Studies in impedance audiometry:11. Children less than six years old.* Arch Otolaryngol 1974; 99: 1 – 9.

Jewett DL, Romano M, Williston J. *Human auditory evoked potentials. Possible Brainstem components detected on the scalp.* Science 1970; 167: 1517- 1518.

Jewett DL. *Auditory evoked far fields averaged from scalp of human.* Brain. 1971; 94: 681- 696.

Johnson NJ, Bage P & Elberling C. *Evoked acoustic emissions from the human ear 111.Findings in neonates.* Scandinavian Audiology 1983;12: 17- 24.

Johnson NJ, and Elberling C. *Evoked acoustic emissions from the human ear.* Scand Audiol 1982; 11:69 - 77.

Kagan J. *Do infants think?* Sci Am 1972; 226: 74 – 82.

Kaplan G, Fleshman J. *Long term effects of Otitis media - A ten year cohort study of Alaskan Eskimo children.* Pediatrics 1973; 52: 577 – 585.

Keith RW. *Middle ear function in neonates.* Arch Otolaryngol 1975; 101: 376 – 379.

Kennedy CR, Kimm L, Cafarelli- Dees D, Evans PIP, Hunter M, Lenton S, Thornton ARD. *Otoacoustic emissions and auditory brainstem responses in the newborn.* Arch Dis Child 1991; 66: 1124 – 9.

Kemp DT, Ryan S, Bray PJ. *A guide to the effective use of otoacoustic emissions.* Ear Hear 1990; 11:93- 105.

Kemp DT. *Acoustic emissions Cochleography – Practical aspects*. Scand Audiol 1986; 25 ( suppl ): 7- 94.

\_\_\_\_\_ (1982) *Cochlear echoes. Implications for noise induced hearing loss*. In: Hanerik RP, Henderson D, and Salvi R, eds. *New perspective on noise induced hearing loss*. New York: Raven Press, 189 – 207.

\_\_\_\_\_ (1978) *Stimulated otoacoustic emissions from within the human auditory system*. J Acoustic Soc Am. 1978; 64: 1386- 91.

Khanna SM, and Leonard DG. *Measurement of basilar membrane vibrations and evaluations of cochlear condition*. Hear Res. 1986; 23: 37 – 53.

Kiang NY, Moxon EC, and Levine RA. *Auditory nerve activity in cats with normal and abnormal cochleas*. In: Wolstenholm GFW, and Knight J, Eds. *Sensorineural hearing loss*. Ciba Symposium. London: Churchill – Livingston, 1970: 241- 273.

Kim DO. *Cochlear mechanics- Implications of electrophysiological and acoustic observation*. Hear Res 1980; 2: 297- 317.

Kok MR, Van Zanten GA, Brocaar MP. *Growth of evoked otoacoustic emissions during the first days post partum*. Audiology 1992; 31:140-9

Kok MR, Van Zanten GA, Brocaar MP. *Growth of evoked otoacoustic emissions during the first few days post partum*. Audiology 1992; 31: 140- 9.

Kretschmer RR, & Kretschmer LW. *Language development and intervention with the hearing impaired*. Baltimore. Md: University Park Press, 1978.

Lilly DJ. *Acoustic impedance at the tympanic membrane*. In: Handbook of Clinical Audiology .Edited by J. Katz. Baltimore: William & Wilkins, 1972; 434 - 469

Liden G. *The scope and application of current audiometric tests*. J Laryngol Otol 1969; 83: 507 – 520.

Liberman MC, and Dodds LW. *Single neuron labeling and chronic cochlear pathology. 111. Stereocilia damage and alterations of threshold tuning curves*. Hear Res 1984; 16: 55 – 74.

Lonsbury – Martin BL, Martin GK, Mc coy MJ, Whitehead ML. *Otoacoustic emissions testing in young children: middle ear influences*. Am J Otol 1994; 15 (supp.1): 13 – 20.

Lutman ME, Davis AC, Fortnum HM, Woods. *Field sensitivity of targeted neonatal hearing screening by Transiently evoked otoacoustic emissions*. Ear and hearing 1997;18: 265 – 76.

Lutman ME. *Evoked otoacoustic emissions in adults: implications for screening*. Audiology in practice 1989; V1/3: 6 – 8.

Mahl AL, Thomson V. *Newborn hearing screening: the great emission*. Pediatrics 1998; 101.

Markides A. *Age at fitting of hearing aids and speech intelligibility*. B J Audiol. 1986; 20: 165 -168

Martin GK, Lonsbury – Martin BL, Probst R, and Coats AC. *Acoustic distortion products in rabbits ear canal: sites of origin revealed by suppression contours and pure-tone exposure*. Hear Res 1987; 28: 191- 208.

Martin JAM, Bentzen O, Colley JRT, Hennebert D, Holm C, Iurato S, De Longe GA, Mc Cullen O, Meyer ML, Moore WJ, Morgan A, *Childhood deafness in the European community*. Scan Audiol 1981; 10: 165 -174.

Mason JA, Hermann. *Universal infant hearing screening by automated auditory brainstem response measurement*. Pediatrics 1998; 101.

Mauk GW, Behren TR. *Historical, political and technological context associated with early identification of hearing loss*. Semin Hear 1993; 14: 1-17.

Maxon AB, Norton SJ, White K, and Brehens T. *Evoked Otoacoustic emissions in neonatal screening and follow- up: Clinical trials*. Mini Seminar presented at the ASHA convention, 1991.

McCandless G, & Thomas G. *Impedance Audiometry as a screening procedure for middle ear disease*. Transactions of the American Academy of Ophthalmology and Otolaryngology 1974; 78: 98 – 102.

Metzo O. *The acoustic impedance measured on normal and pathological ears*,thesis. Arch Otolaryngologica suppl 1946.

Norton SJ and Hayes JM. *The effects of prior stimulation on otoacoustic emission*. Presented at the 1Vth. International conference on the effects of noise on the auditory system, Beaun, France, 1990.

Ostwald PF, and Peltzman P. *The cry of the human infant*. Sci Am, March 1974.

Owens JJ, Mc Coy MJ, Lonsbury – Martin BC, MartinGK. *Influence of Otitis media on evoked Otoacoustic emissions in children*. Semin Hear 1992; 13: 53 – 6.

Peck JE. *Development of hearing Part 111: postnatal development*. J Am Acad Audiol 1995; 6: 113 – 123.

Pickles Jo. *An introduction to the physiology of hearing*. London: Academic Press, 1988.

Quigley SP. *Environment and communication in the language development of deaf children*. In: Bradford LJ, Hardy WA, eds. *Hearing and hearing impairment*. New York NY: Grune & Stratton, 1979; 287 – 297.

Resource centre. *Registering your child with social welfare department. Services for people with disabilities*. Malaysian CARE , May1994.

Robertson EO, Peterson JL, Lamb LE. *Relative impedance measurements in young children*. Arch Otolaryngol 1968; 88: 70 – 76.

Ross M. *Implications of delay in detection and management of deafness*. Volta Rev 1990; 92: 69 – 79.

Rutten WLC. *Evoked acoustic emissions from within abnormal human ears. Comparison with audiometric and electrographic findings*. Hearing Research 1980; 2: 263 – 271.

Rutherford. *What and how we hear*. In; Newby HA, *Audiology*, 4<sup>th</sup>.edn. Prentice-Hall, Inc;1979:57

Schulman- Galambos C & Galambos H. *Brainstem auditory evoked responses in premature infants*. J Speech Hear Res 1975; 18: 456 – 465.

Siegel JH, and Kim DO. *Efferent neural control of cochlear mechanics? Olivocochlear bundle stimulation affects cochlear biomechanical non-linearity*. Hear Res 1982; 6: 171 – 182.

Simmons F, and Russ F. *Automated newborn hearing screening, The Crib - O- Gram*. Arch Otolaryngol 1974; 100: 1 – 7.

Sohmer H, Feinmesser M. *Cochlear action potentials recorded from the external ear in man*. Ann. Otolaryngol 1967; 76: 427 – 435.

Spring DR, and Dale PA. *Discriminations of linguistic stress in early infancy*. J Speech Hear Res 1977; 20: 224 – 232.

Stover LJ & Norton SJ. *Comparisons among different emission types*. Paper presented at the midwinter meeting of the association for research in Otolaryngology, 1992.

Stevens JC, Webb HD, Smith MF, Bufflin JT, and Ruddy 11. *Comparison of Otoacoustic emissions and brainstem electric response audiometry in the normal newborn and babies admitted to a special care baby unit*. Clinical physics and physiological measurement 1987; 8: 95 – 104.

Steven JC. *Click evoked otoacoustic emissions compared with Brainstem electric response*. Arch Dis Child 1989; 64: 1105 – 1111.

Stockard JJ, Sharbrough FW. *Non- Pathologic factors influencing brainstem auditory evoked potentials*. Am J EEG. Technol 1978; 18: 117-209

Sutton GJ. *Tympanometry and Otoacoustic emissions in a cohort of special care neonates*. Br J Audiol 1996; 30: 9 – 17.

Sukgi SC, Pafitis IA, Herer GR, Zalzal GH, Patel KM. *Clinical application of transiently evoked Otoacoustic emission in the Pediatric population*. The annals of Otolology, Rhinology & Laryngology 1999; 108: 132 – 138.

Taylor D, and Mencher GT. *Neonatal responses, the effect of infant state and auditory stimuli*. Arch Otolaryngol 1972; 95: 120 – 124.

Thornton ARD, Kim L, Kennedy CR, Cafarelli- Dees D. *Ear factors affecting evoked otoacoustic emissions in neonates*. Br J Audiol 1993; 27: 319 – 27.

Turner G. *Response to Voice of mother and stranger by babies in the first year*. Presented at meeting of the society for Research in child development, Santa Monica, March 1969.

Vohr BR, Chang KW. *External and middle ear status related to Evoked otoacoustic emissions in neonates*. Arch Otolaryngol Head Neck Surg 1993; 119: 276-82.

White KR, Vohr BR, Maxon AB, Behrens TR, Mank GW. *Screening of newborns for hearing loss using transient evoked otoacoustic emission*. Am J Paed Otolaryngol 1994; 29: 203 – 217.

Winton A, Smyth V, Kei J, Mc Pherson B. *Infant hearing screening: A comparison of two techniques*. Australian and New Zealand Journal of Public Health 1998; 22: 261 – 265.

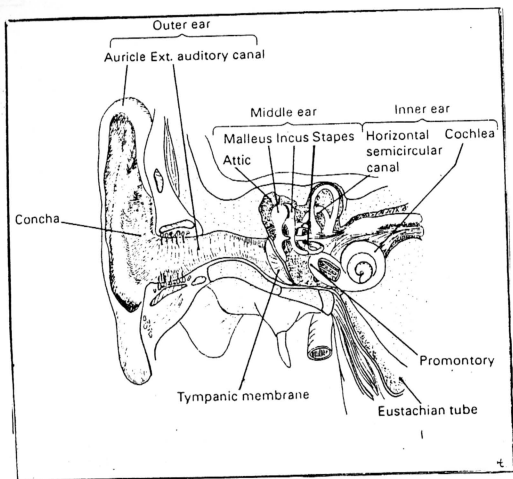
Wrightstone JW, Aronow MS, Moskowitz S. *Developing reading test norms for deaf children*. Am Ann Deaf 1963; 108: 311 – 316.

Yoshinaga – Itano C. *Language of Early – and Later- identified children with hearing loss*. Pediatrics 1998; 102: 1161–1171.

## APPENDIX A

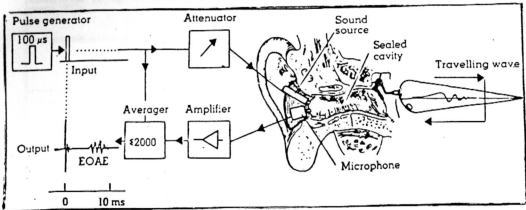
### **SCHEMATIC DIAGRAM OF THE RIGHT EAR**

( From Handbook of Audiological techniques, by Deborah Ballantyne,  
illustration by Rita Troisio, Butterworth- Heinemann , Ltd 1990)



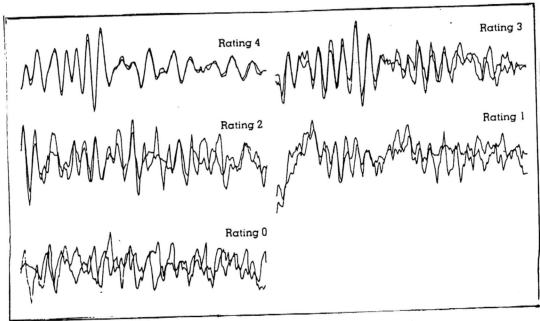
## APPENDIX B

### **BASIC METHOD OF RECORDING EVOKED OTOACOUSTIC EMISSIONS STIMULATED BY TRANSIENT SOUND** ( *From Audiology in Practice VI/ 3, Excerpta Medica 1989* )



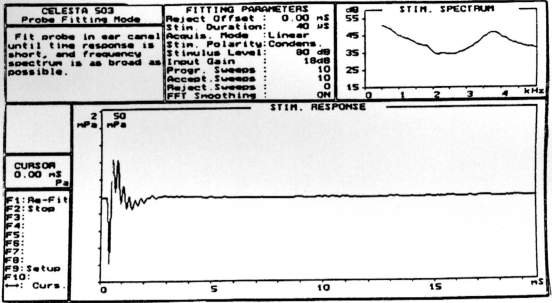
## APPENDIX C

### **EVOKED OTOACOUSTIC EMISSIONS ILLUSTRATING THE SUBJECTIVE RATING CATEGORIES FROM 0 ( ABSENT ) TO 4 ( VERY CLEAR ).** ( *From Audiology in Practice VI / 3, Excerpta Medica 1989* )



## APPENDIX D

EXAMPLE OF A GOOD PROBE FIT IN THE SUBJECT'S EAR CANAL FOR ACCURATE AND REPLICABLE MEASURING.



## APPENDIX E

TRANSIENT EVOKED OTOACOUSTIC EMISSIONS ( TEOAE )  
EXAMPLE OF A TEOAE RESPONSE

