

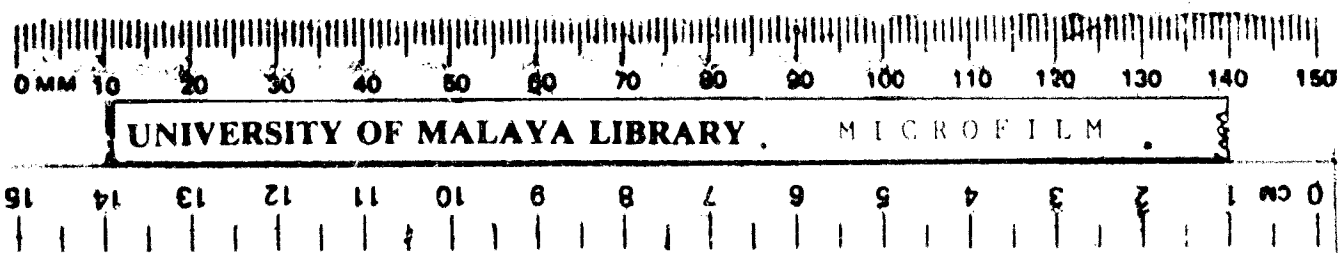


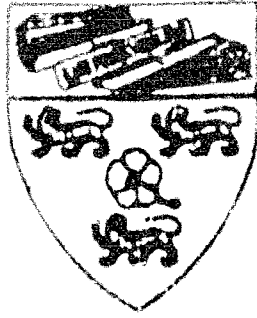
PERPUSTAKAAN UNIVERSITI MALAYA

PERKHIDMATAN REPROGRAFI

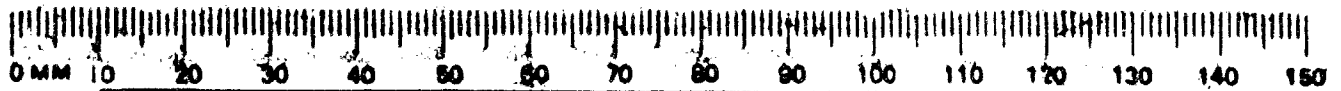
UNIVERSITY OF MALAYA LIBRARY

REPROGRAPHIC SERVICE

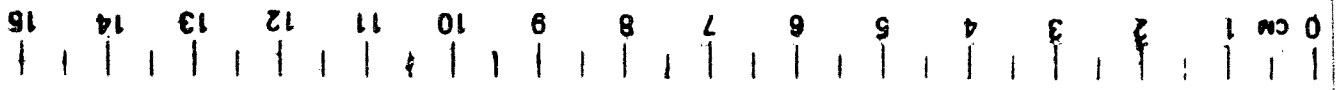




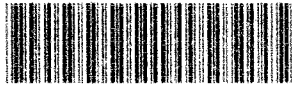
MULA



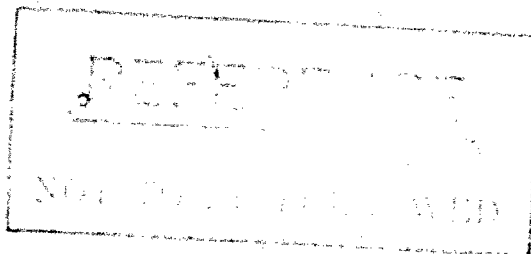
UNIVERSITY OF MALAYA LIBRARY . MICROFILM .



PER. UTAMA-UM



A004469472



mfis - 10648

THE ECONOMIC EFFECTS OF
THE SUBDIVISION OF RUBBER ESTATES IN
THE DISTRICTS OF SEREMBAN AND PORT DICKSON
STATE OF NEGRI SEMBILAN
FEDERATION OF MALAYA

By

Kwan Kwong Seong

[11/11/61 235]

22222

An Academic Exercise presented in part fulfilment
of the requirements for the Degree of
Bachelor of Arts with Honours in Economics

University of Malaya
in Kuala Lumpur

August 1961

TABLE OF CONTENTS

	Page
LIST OF TABLES	vi
LIST OF FIGURES	ix
Chapter	
I. INTRODUCTION	1
Briefing and Planning	1
Field Work	1
Method	2
Difficulties Encountered	3
Acknowledgments	3
II. A GENERAL STUDY - SEREMBAN DISTRICT	4
PATTERN OF SUBDIVISION	4
Comparison of Subdivided Area and Total Area of Rubber Land in Seremban District.	7
TYPES OF SUBDIVISION	9
Primary Subdivision	9
Partial Subdivision	10
Pseudo Subdivision	11
SIZE OF SUBDIVIDED PIECES	12
PRODUCTION	15
Yield	15
Systems of Tapping	15
Processing of Rubber	17
Smoking of Rubber	17
Condition of Trees	18
Quality of Rubber Produced	18
Scrap Rubber	18
LABOUR AND EARNINGS	19
Labour Situation	19
Wages and Income	19
Methods of Payment	22
Geographical and Occupational Mobility of Labour	23
Previous Experience of Labour	23
Application of Fungicides	24
Conditions of Work	24

Trade Union Membership	25
E.P.F. Membership	25
PERMANENT CAPITAL ASSETS	27
MARKET STRUCTURE	28
OWNERSHIP	29
III. A CASE STUDY - THIRD MILE ESTATE	34
INTRODUCTION	34
Location	34
Nature of the Land	35
Situation Before Subdivision	35
PROCESS OF SUBDIVISION	36
PATTERN OF SUBDIVISION	41
SIZE OF SUBDIVIDED PIECES	42
SIZE OF OPERATING UNITS	48
PRODUCTION	50
Yield	50
Systems of Tapping	54
Photographs	56
Costs of Processing	58
Quality of Rubber Produced	59
Condition of Trees	59
LABOUR AND EARNINGS	60
Labour Situation	60
Wages and Income	62
Comparison of Earnings Before and After Subdivision	63
Loss of Income in Kind	63
Geographical and Occupational Mobility of Labour	65
Conditions of Work	65
PERMANENT CAPITAL ASSETS	66
MARKET STRUCTURE	66
Marketing of Scrap Rubber	67
REPLANTING	67

Chapter	Page
OWNERSHIP	68
Types of New Owners	69
Geographical Distribution of New Owners	69
Occupations of New Owners	70
Sources of Finance for the Acquisition of Land	71
Method of Land Acquisition	73
LAND VALUES	74
 IV. A GENERAL STUDY - PORT DICKSON BISTRIC	75
PATTERN OF SUBDIVISION	75
SIZE OF SUBDIVIDED PIECES	77
TYPES OF SUBDIVISION	78
PRODUCTION	79
Yield	79
Systems of Tapping	79
Acreage Tapped Daily	79
Processing of Rubber	79
Quality of Rubber Produced	80
LABOUR AND EARNINGS	80
Conditions of Work	80
Wages and Income	81
Geographical and Occupational Mobility of Labour	81
E.P.F. and Trade Union Membership	82
PERMANENT CAPITAL ASSETS	82
REPLANTING	82
Photographs	83
OWNERSHIP	84
LAND VALUES	84
 V. A CASE STUDY - SI RUSA ESTATE	86
INTRODUCTION	86
Location	86
Situation Before Subdivision	86
PATTERN OF SUBDIVISION	87

PRODUCTION	88
Yield	88
Systems of Tapping	89
Area Operated and Tapped Daily	90
Costs of Processing	90
Quality of Rubber Produced	92
Condition of Trees	92
 LABOUR AND EARNINGS	 92
Labour Situation	92
Wages and Income	92
Photographs	93
Geographical and Occupational Mobility of Labour	94
Conditions of Work	95
E.P.F. Membership	95
Trade Union Membership	95
Effects of Subdivision on Labour and Earnings	95
 MARKET STRUCTURE	 96
 REPLANTING	 96
 OWNERSHIP	 97
 LAND VALUES	 97
 VI. CONCLUSION	 99
Pattern of Subdivision	99
Living and Working Conditions	102
Unemployment	102
Changes in the Quality of Rubber	103
Condition and Maintenance of Trees	103
Trade Union Membership	104

Appendices

I.	Plan A - Proposed Subdivision of Third Mile Estate	105
II.	Plan B - Subdivision of Third Mile Estate	106
III.	Plan C - Subdivision of Third Mile Estate	107
IV.	Plan D - Subdivision of Third Mile Estate	108
V.	Plan E - Subdivision of Si Husa Estate	109
VI.	Plan F - Subdivision of Si Husa Estate	110

LIST OF TABLES

Table	Page
1.1	Extent of Rubber Land and Number of Estates in the Districts of Seremban and Port Dickson 2
2.1	Subdivision of Estates by Mukim and Date, Seremban District 5
2.2	Comparison of Extent and Pattern of Subdivision on the Basis of Three Sources of Information, Seremban District 6
2.3	Subdivision of Ten Estates in Seremban District by Mukims 8
2.4	Distribution of Subdivided Pieces by Size, District of Seremban 13
2.5	Tapping Systems Adopted on Smallholdings, District of Seremban 16
2.6	Operators' Household Population in Seremban District 20
2.7	Comparison of the Monthly Incomes of Current Operators Before and After Subdivision in the District of Seremban 21
2.8	Methods of Payment of Current Operators, Seremban District 22
2.9	Previous Experience of Labour in Rubber Farming 23
2.10	Comparison of Trade Union Membership of Current Operators Before and After Subdivision 26
2.11	Comparison of E.P.F. Membership of Current Operators Before and After Subdivision 26
2.12	Size of Operating Unit by Type of Ownership, Seremban District 31
3.1	Distribution of Subdivided Pieces by Size, Third Mile Estate 43

3.2	Modified Distribution of Subdivided Pieces by Size, Third Mile Estate	44
3.3	Frequency Distribution of Subdivided Pieces by Size, Third Mile Estate	44
3.4	Distribution of Operating Units by the Number of Pieces in Each Unit, Third Mile Estate	49
3.5	Distribution of Own Account Operating Units by Size, Third Mile Estate	49
3.6	Comparison of Yield of Owner Operated and Non-owner Operated Units, Third Mile Estate	51
3.7	Acreage and Number of Trees Tapped Daily on Own Account and Non-own Account Operating Units, Third Mile Estate	52
3.8	Distribution of Yield per Acre per Tapping per Day (Yo), Third Mile Estate	53
3.9	Tapping Systems Adopted on Third Mile Estate	54
3.10	Quality of Rubber Produced by Third Mile Estate	59
3.11	Composition of Labour Force of Third Mile Estate, By Race, Before and After Subdivision	60
3.12	Composition of Labour Force of Third Mile Estate, By Sex, Before and After Subdivision	61
3.13	Operators' Household Population, Third Mile Estate	62
3.14	Comparison of Monthly Incomes of Owner Operators and Direct Employees Before and After Subdivision, Third Mile Estate	64
3.15	Distribution of Ownership, Third Mile Estate	69
3.16	Geographical Distribution of New Owners of Third Mile Estate	70
3.17	Occupations of New Owners of Third Mile Estate	71
3.18	Sources of Finance for the Acquisition of Land by Owner Operators, Third Mile Estate	72

Table	Page	
4.1	Comparison of Extent and Pattern of Subdivision on the Basis of Three Sources of Information, Port Dickson District	75
4.2	Subdivision of Estates by Mukim, Port Dickson District	76
4.3	Subdivision of Estates by Type of Subdivision, Port Dickson District	77
4.4	Frequency Distribution of Subdivided Pieces by Size, Port Dickson District	78
4.5	Land Values of Six Subdivided Estates in the District of Port Dickson	84
5.1	Frequency Distribution of Subdivided Pieces by Size, Si Rusa Estate	87
5.2	Distribution of Yield per Acre per Tapping per Day (Yo), Si Rusa Estate	88
5.3	Tapping Systems Adopted on Si Rusa Estate	89
5.4	Acreage and Number of Trees Tapped Daily on Own Account and Non-own Account Operating Units, Si Rusa Estate	91
5.5	Operators' Household Population, Si Rusa Estate	94
5.6	Land Values (per Acre) of Subdivided Pieces of Si Rusa Estate	98
6.1	Pattern of Subdivision in the Districts of Seremban and Port Dickson from 1956 to 1st Quarter of 1961	100
6.2	Frequency Distribution of Subdivided Pieces by Size in the Districts of Seremban and Port Dickson	101

LIST OF FIGURES

Figure		Page
2.1	Cumulative Percentage Graph Showing Distribution of Subdivided Pieces by Size, District of Seremban	14
2.2	Size of Operating Unit by Type of Ownership, District of Seremban	32
3.1	Distribution of Subdivided Pieces ^{By Size and Percentage,} Third Mile Estate	45