

CHAPTER 7

SUPPLEMENTARY

7.2 APPENDIX

7.2.1 Raw data of Pure Paracetamol

7.2.2 Raw data of Pure Kappa-Carrageenan

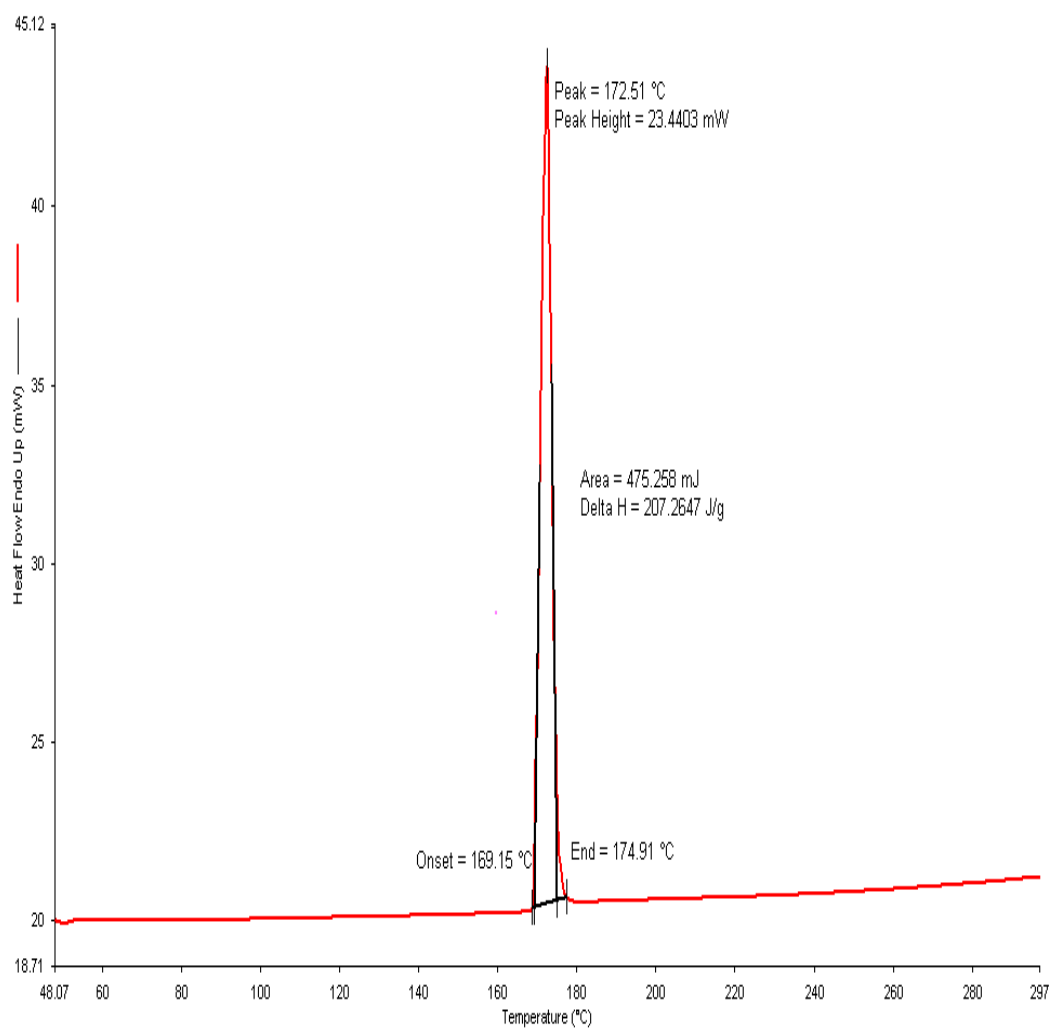
7.2.3 Raw data of Sample A

7.2.4 Raw data of Sample B

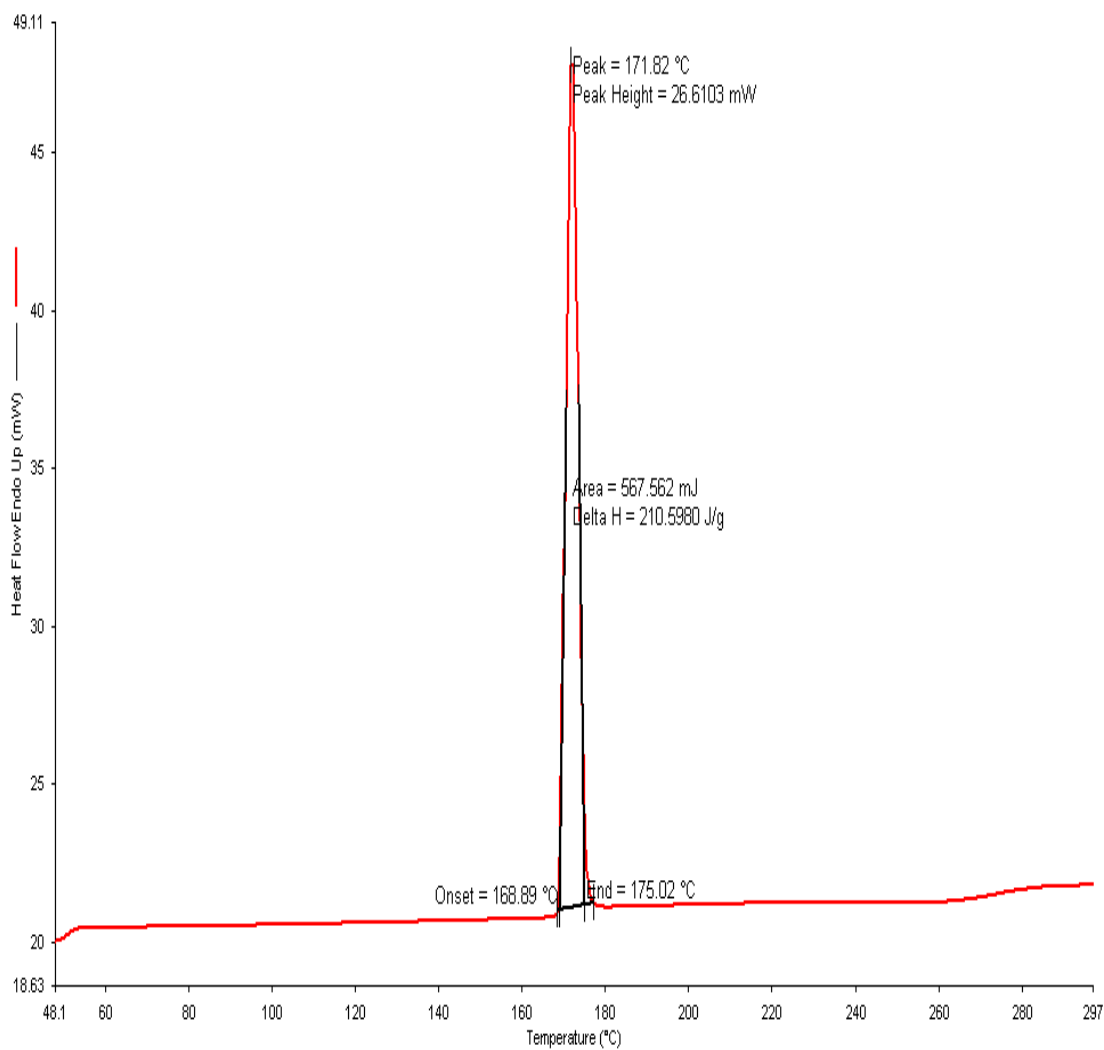
7.2.5 Raw data of Sample C

7.2.6 Raw data of Sample D

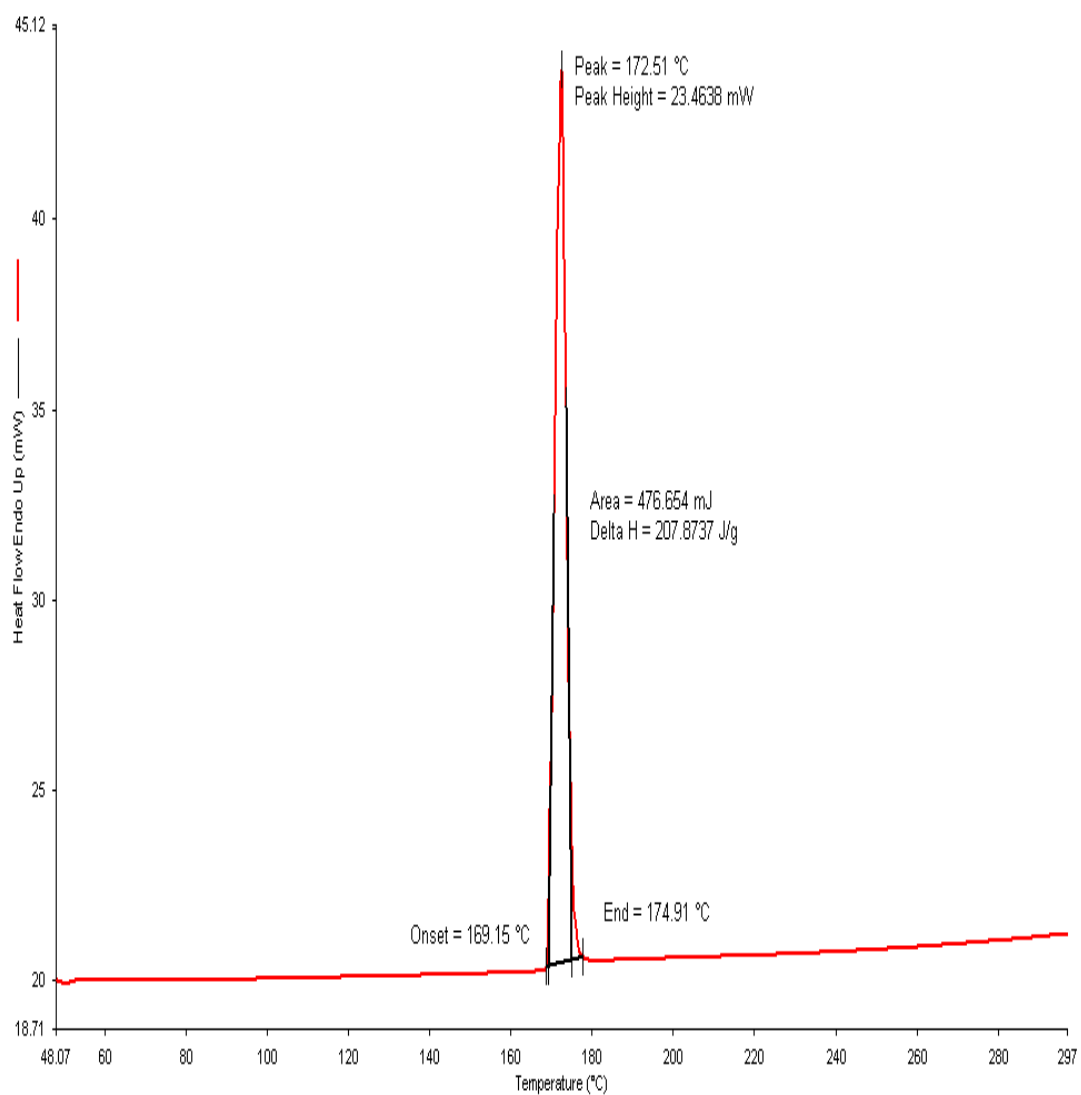
Sample ID: paracetamol_1
Sample Weight: 2.400 mg
Heat from 50.00°C to 300.00°C at 10.00°C/min
Switch the Gas to Nitrogen at 20.0 ml/min



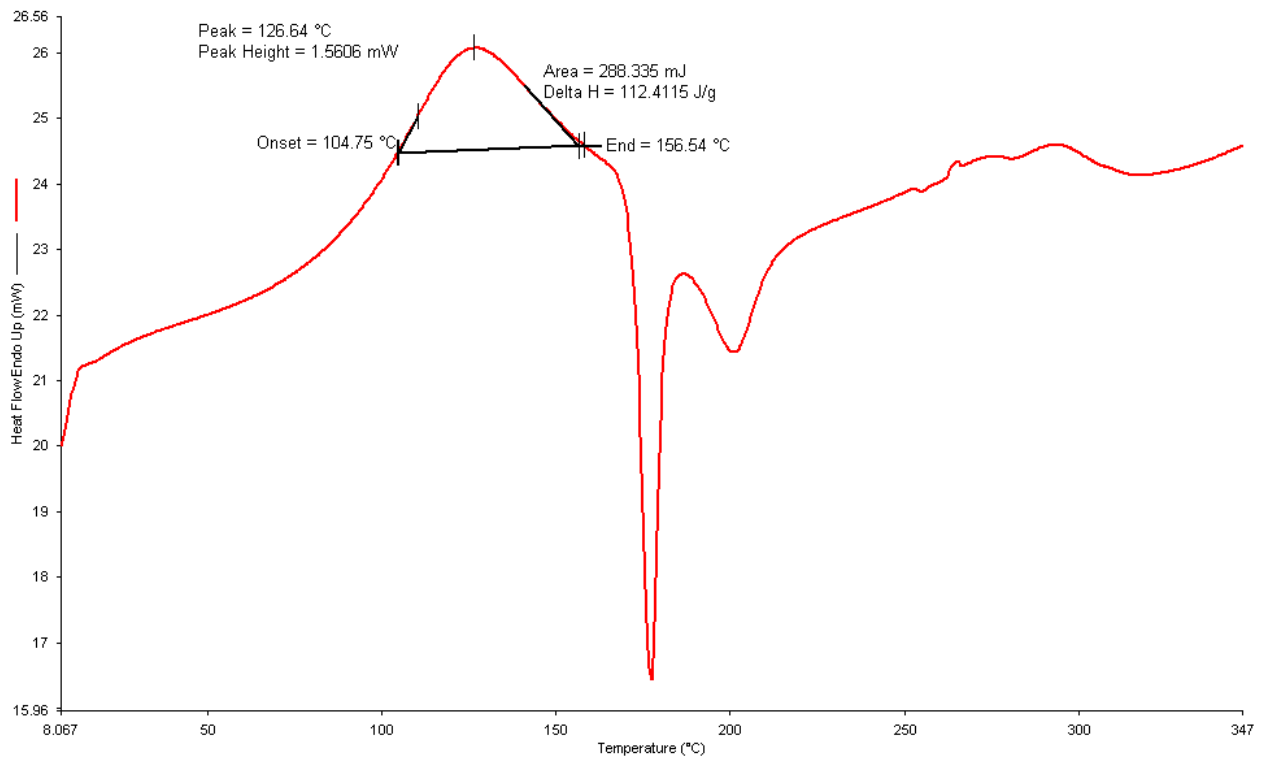
Sample ID: paracetamol_2
Sample Weight: 2.695 mg
Heat from 50.00°C to 300.00°C at 10.00°C/min
Switch the Gas to Nitrogen at 20.0 ml/min



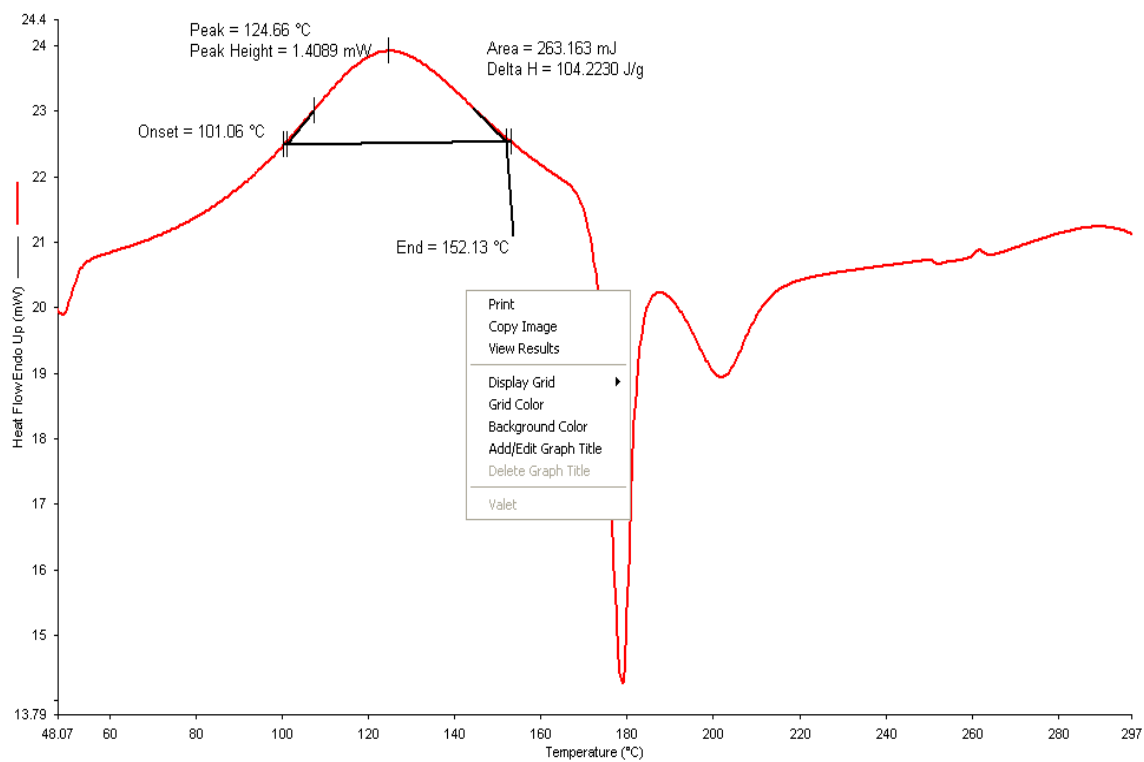
Sample ID: paracetamol_3
Sample Weight: 2.293mg
Heat from 50.00°C to 300.00°C at 10.00°C/min
Switch the Gas to Nitrogen at 20.0 ml/min



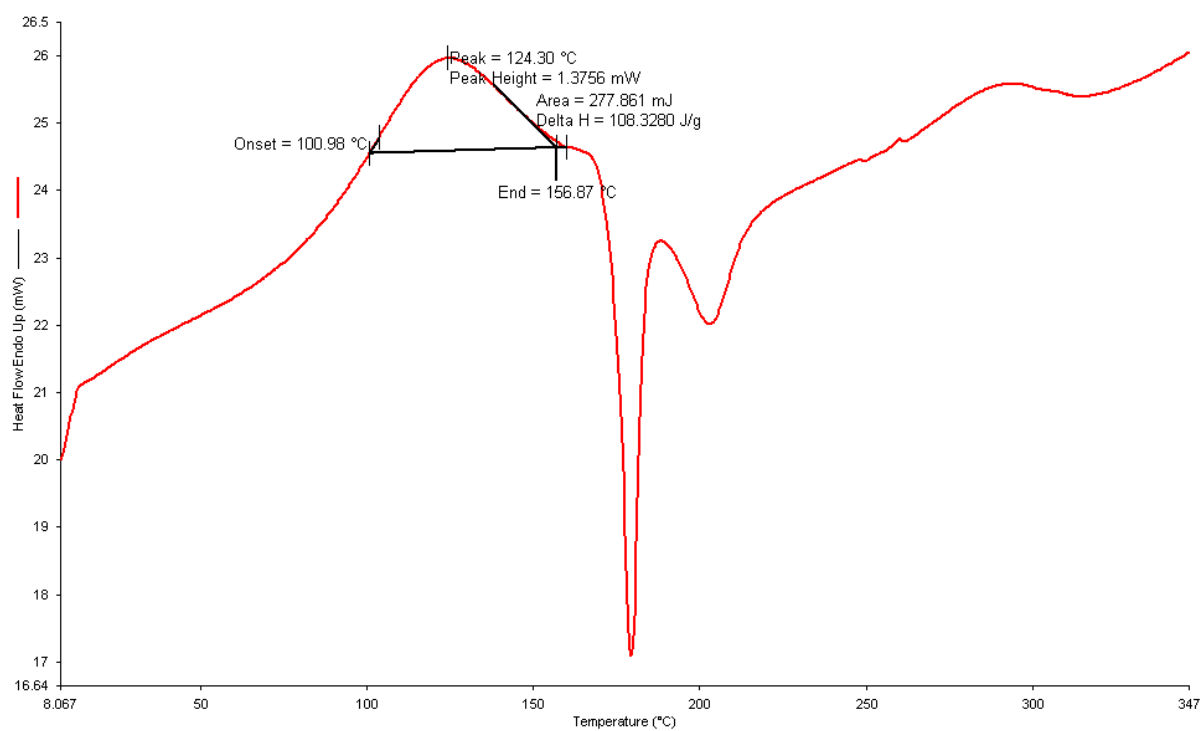
Sample ID: kappa_carrageenan_1
Sample Weight: 2.525mg
Heat from 50.00°C to 300.00°C at 10.00°C/min
Switch the Gas to Nitrogen at 20.0 ml/min



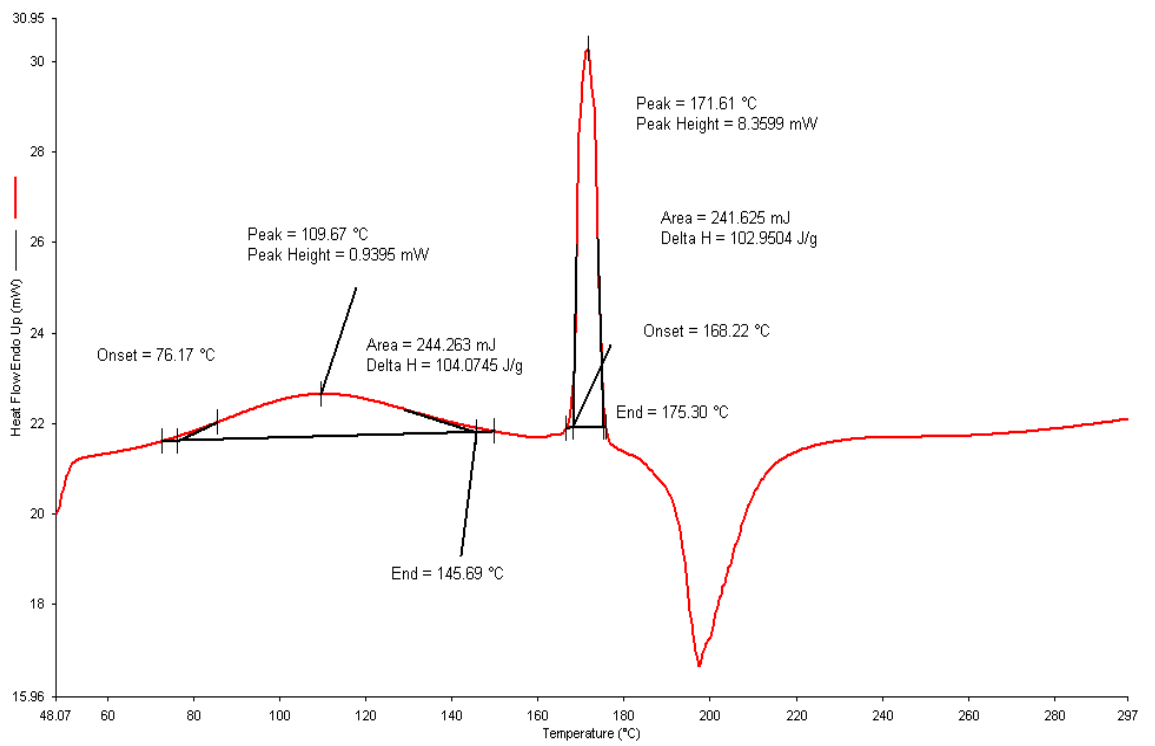
Sample ID: kappa_carrageenan_2
Sample Weight: 2.508mg
Heat from 50.00°C to 300.00°C at 10.00°C/min
Switch the Gas to Nitrogen at 20.0 ml/min



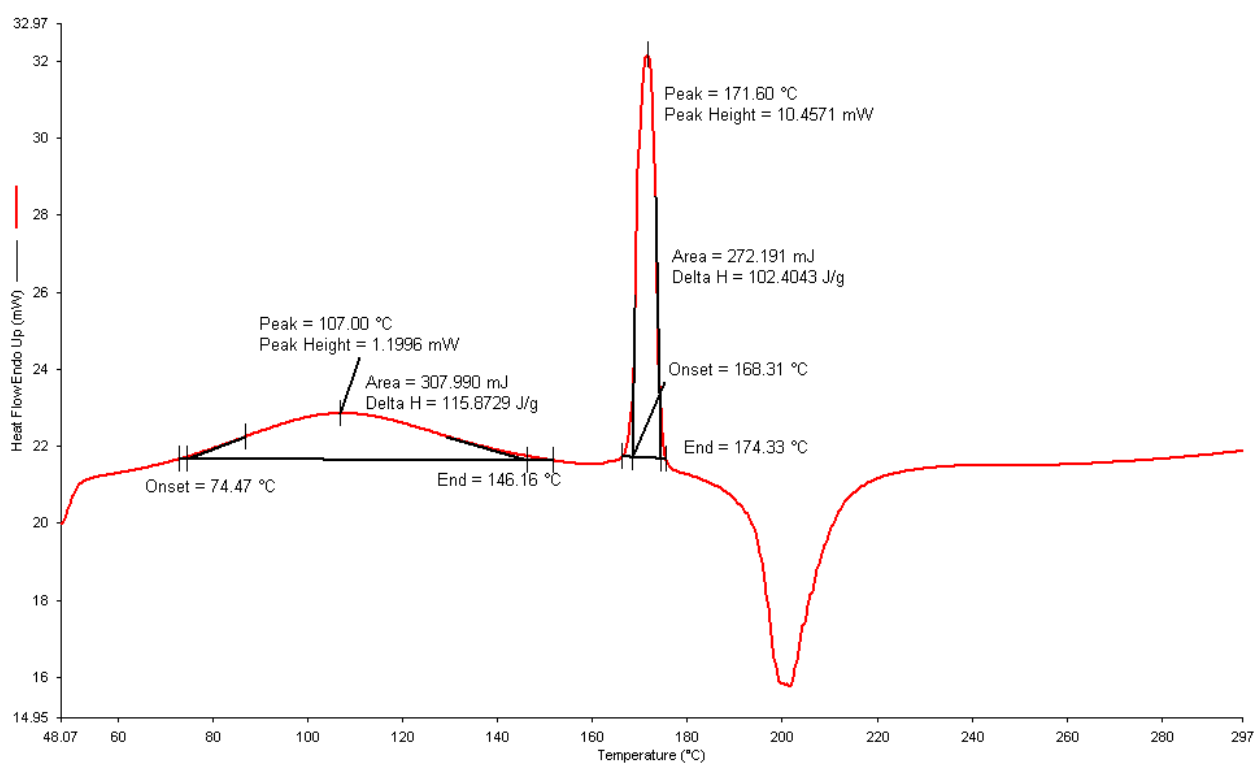
Sample ID: kappa_carrageenan_3
Sample Weight: 2.565mg
Heat from 50.00°C to 300.00°C at 10.00°C/min
Switch the Gas to Nitrogen at 20.0 ml/min



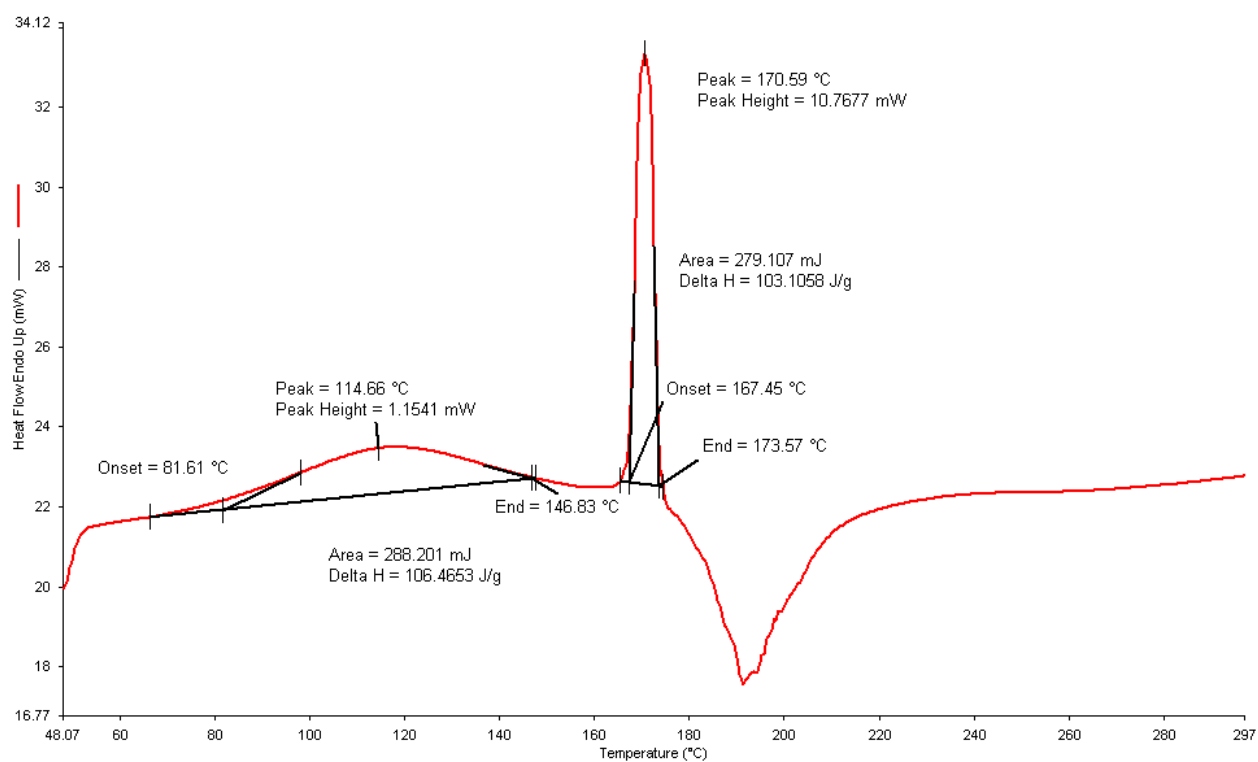
Sample ID: sample A_1
Sample Weight: 2.347mg
Heat from 50.00°C to 300.00°C at 10.00°C/min
Switch the Gas to Nitrogen at 20.0 ml/min



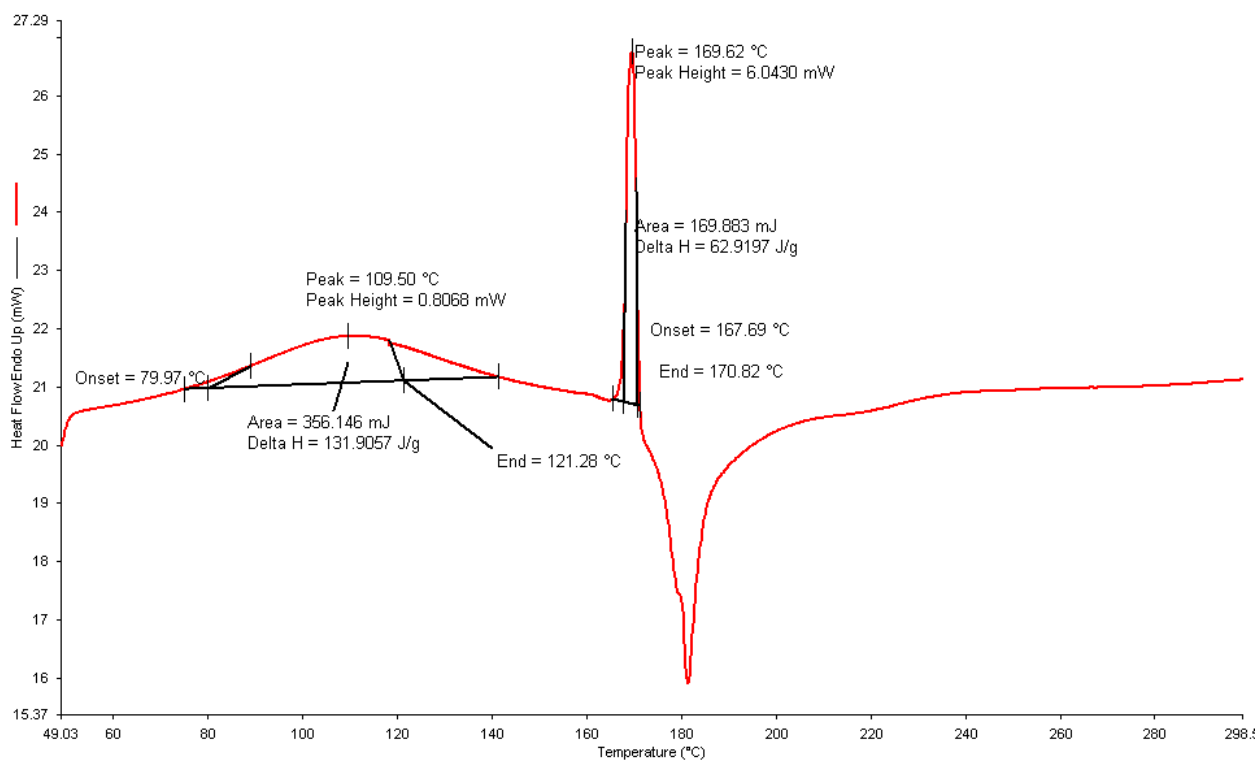
Sample ID: sample A_2
Sample Weight: 2.658mg
Heat from 50.00°C to 300.00°C at 10.00°C/min
Switch the Gas to Nitrogen at 20.0 ml/min



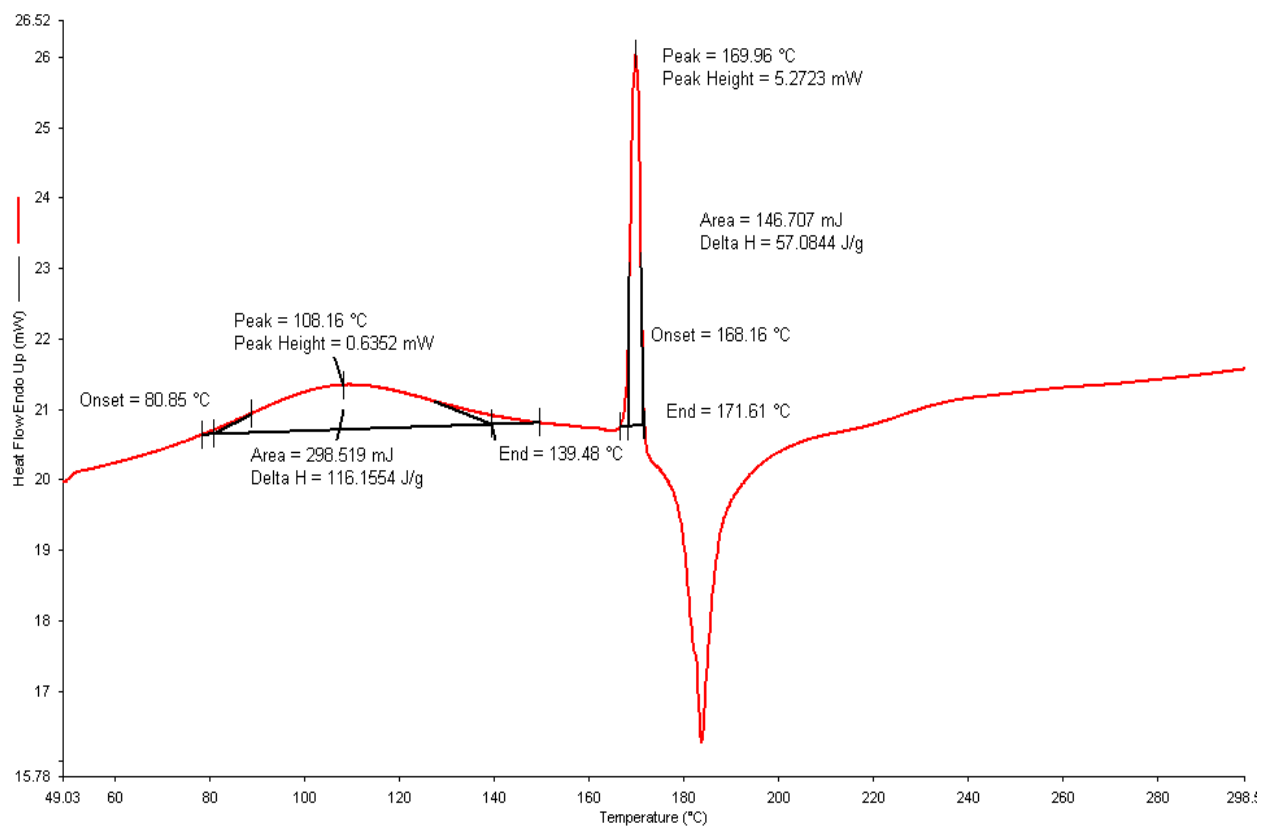
Sample ID: sample A_3
Sample Weight: 2.707mg
Heat from 50.00°C to 300.00°C at 10.00°C/min
Switch the Gas to Nitrogen at 20.0 ml/min



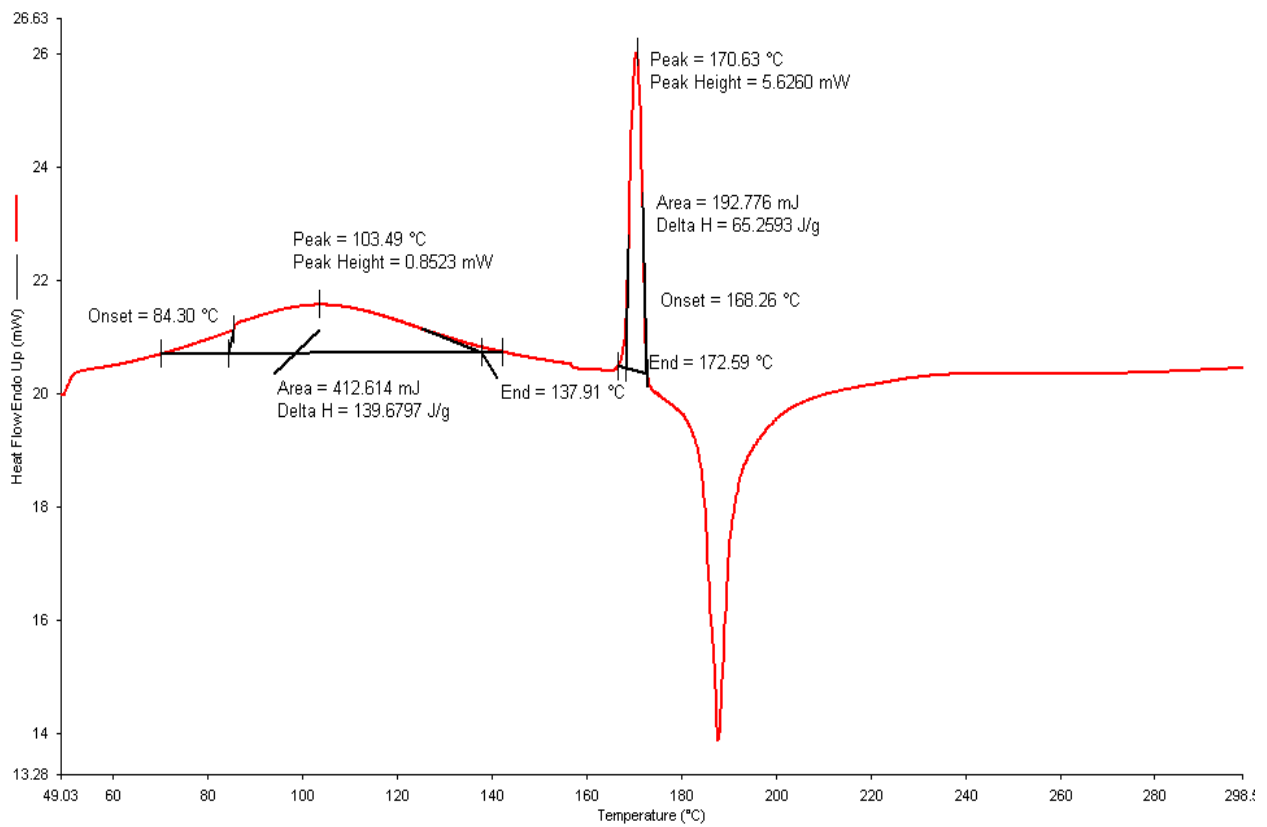
Sample ID: sample B_1
Sample Weight: 2.700mg
Heat from 50.00°C to 300.00°C at 10.00°C/min
Switch the Gas to Nitrogen at 20.0 ml/min



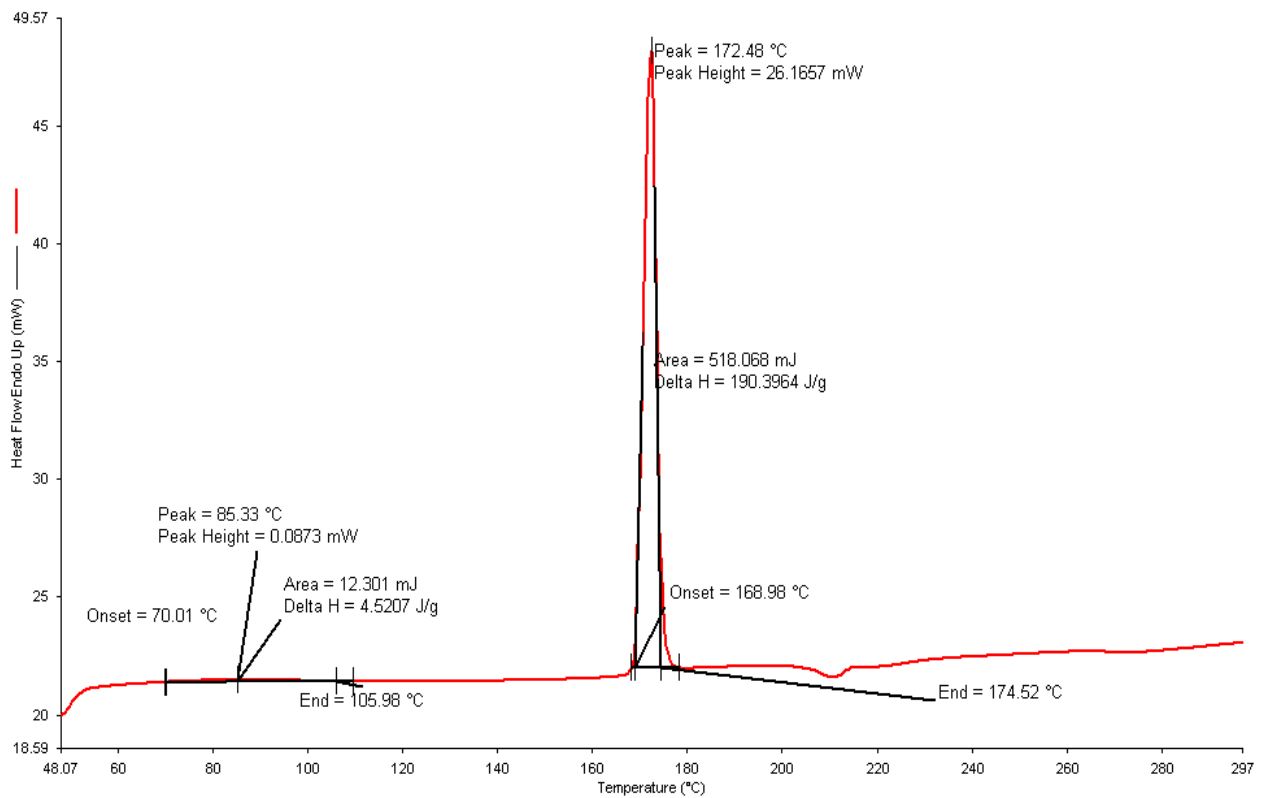
Sample ID: sample B_2
Sample Weight: 2.570mg
Heat from 50.00°C to 300.00°C at 10.00°C/min
Switch the Gas to Nitrogen at 20.0 ml/min



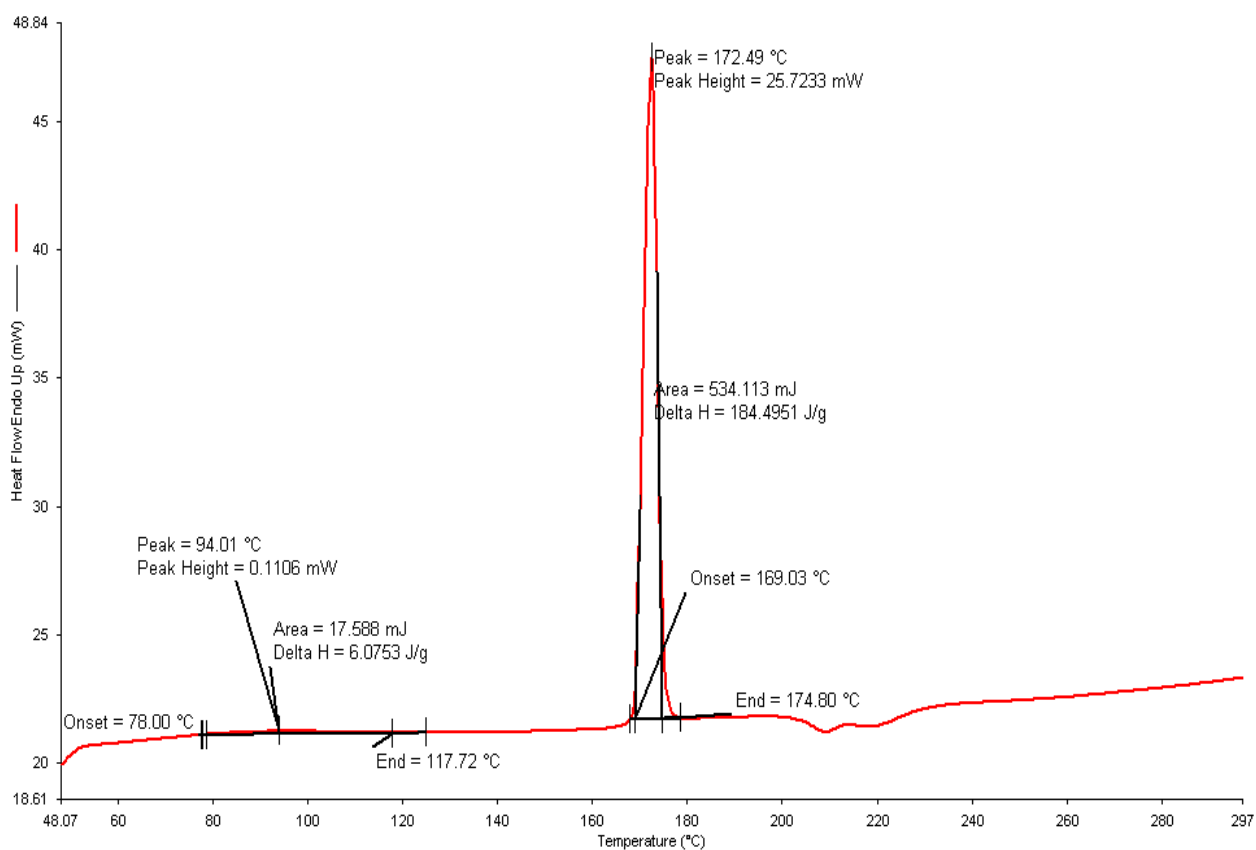
Sample ID: sample B_3
Sample Weight: 2.954mg
Heat from 50.00°C to 300.00°C at 10.00°C/min
Switch the Gas to Nitrogen at 20.0 ml/min



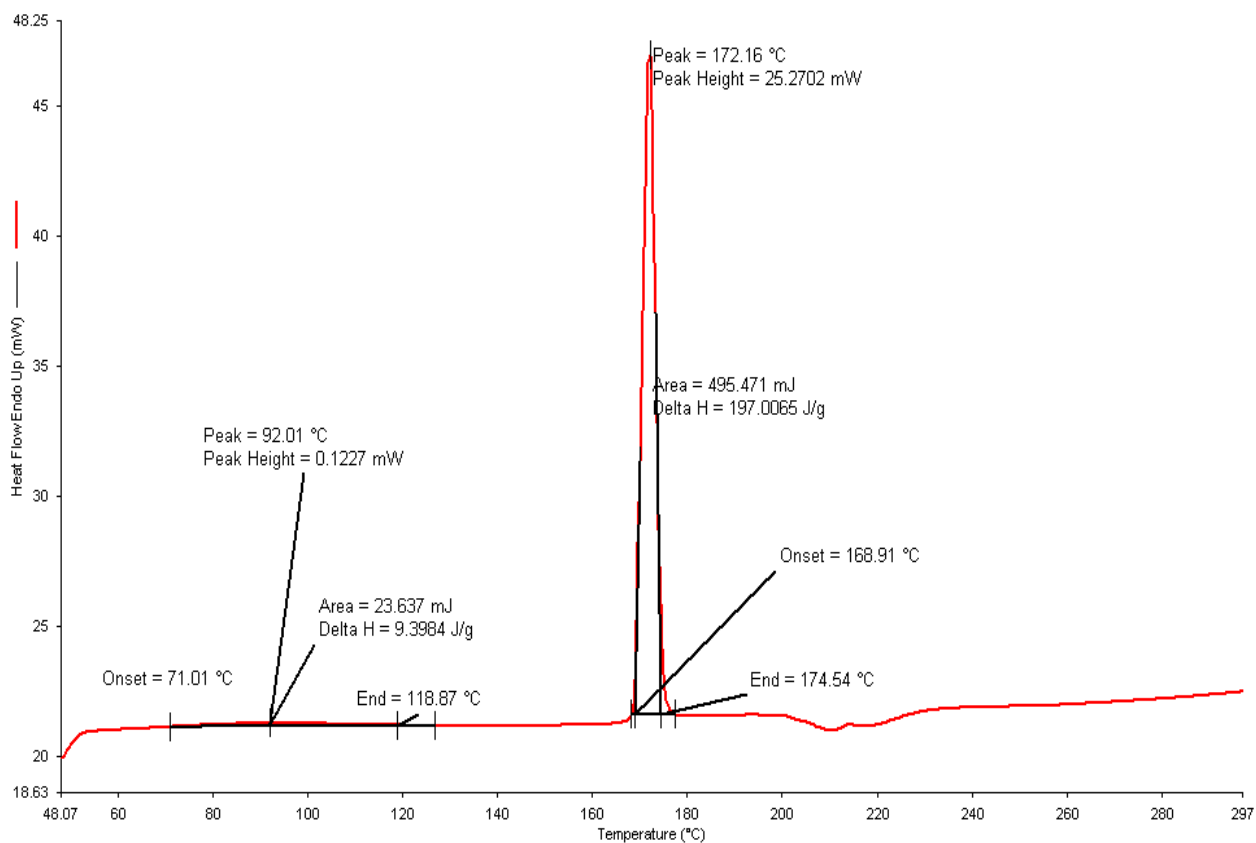
Sample ID: sample C_1
Sample Weight: 2.721mg
Heat from 50.00°C to 300.00°C at 10.00°C/min
Switch the Gas to Nitrogen at 20.0 ml/min



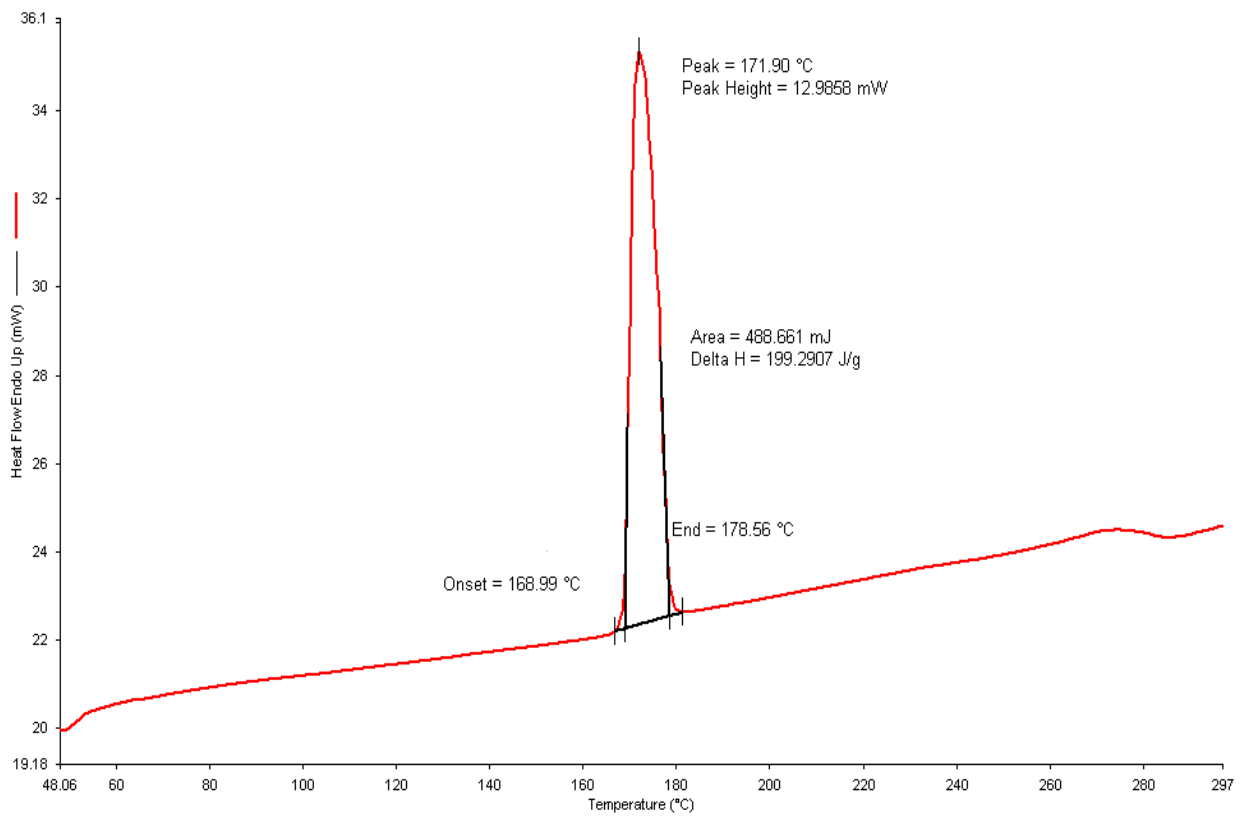
Sample ID: sample C_2
Sample Weight: 2.895mg
Heat from 50.00°C to 300.00°C at 10.00°C/min
Switch the Gas to Nitrogen at 20.0 ml/min



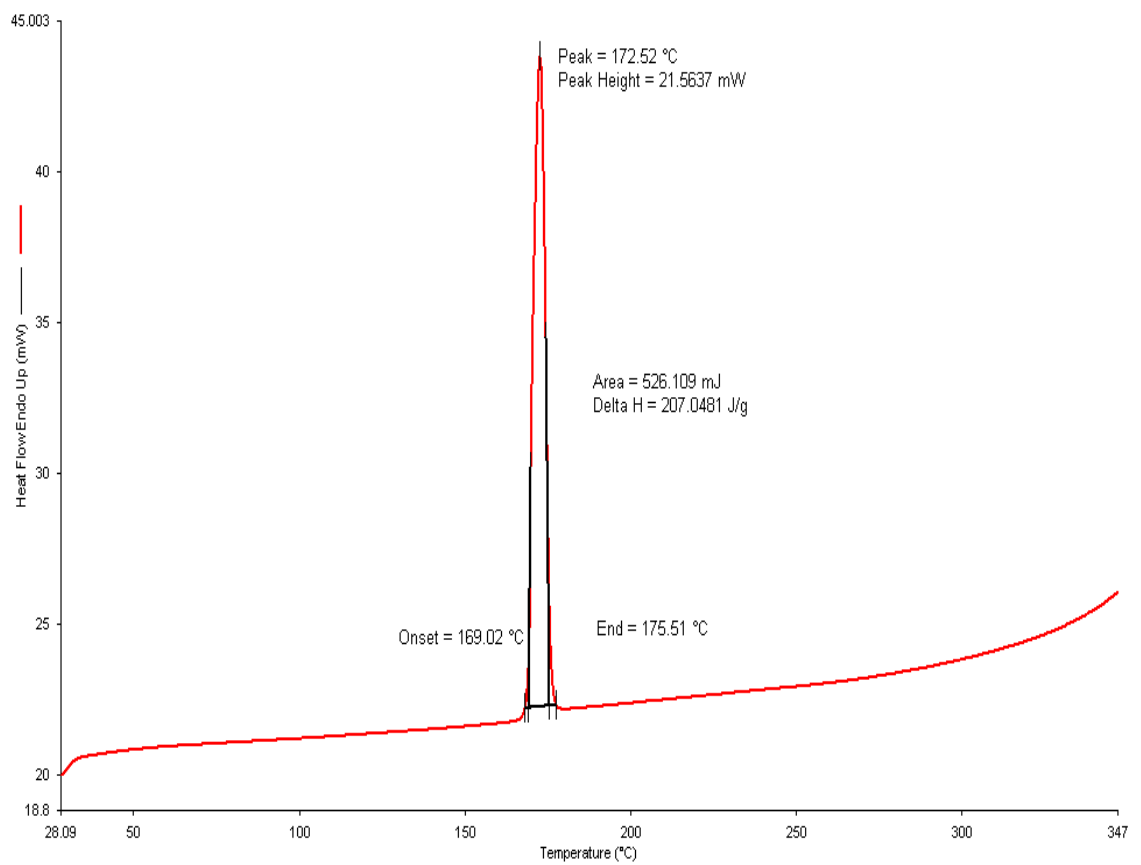
Sample ID: sample C_3
Sample Weight: 2.515mg
Heat from 50.00°C to 300.00°C at 10.00°C/min
Switch the Gas to Nitrogen at 20.0 ml/min



Sample ID: sample D_1
Sample Weight: 2.452mg
Heat from 50.00°C to 300.00°C at 10.00°C/min
Switch the Gas to Nitrogen at 20.0 ml/min



Sample ID: sample D_2
Sample Weight: 2.541mg
Heat from 50.00°C to 300.00°C at 10.00°C/min
Switch the Gas to Nitrogen at 20.0 ml/min



Sample ID: sample D_3
Sample Weight: 2.373mg
Heat from 50.00°C to 300.00°C at 10.00°C/min
Switch the Gas to Nitrogen at 20.0 ml/min

