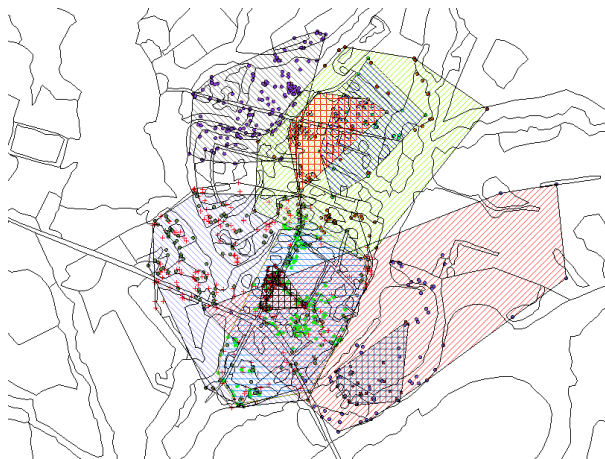
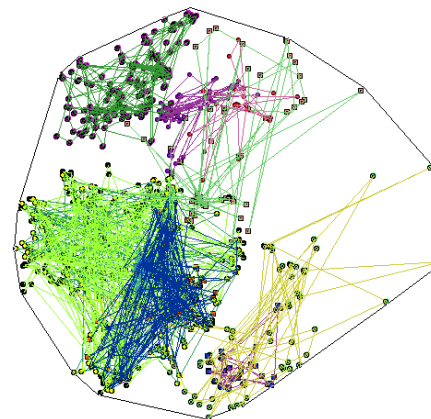


ALL INDIVIDUALS HOME RANGES (CEMPAKA STUDY AREA) AND COMPLETE AREA TRACKED

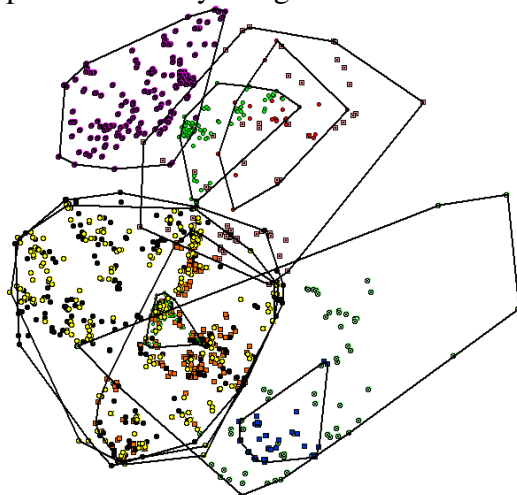
Home Range and Biotope-Map



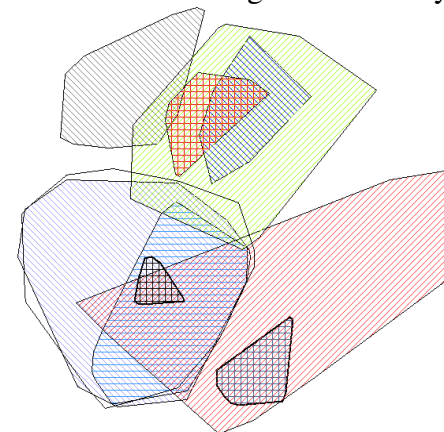
Complete Area (Individuals Tracked)



Waypoints Taken by using GPS 12 XL Garmin

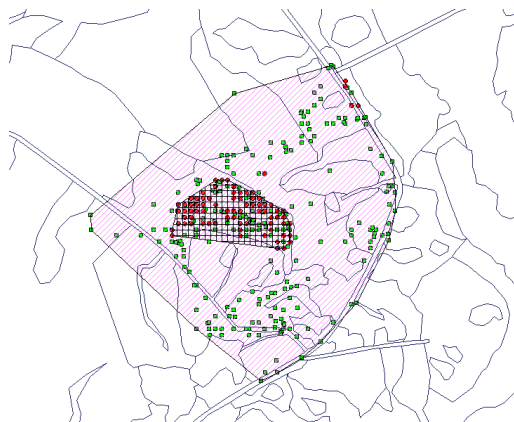


Individual Home Range Identified by Color

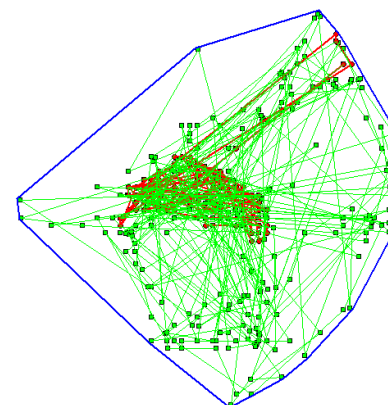


ALL INDIVIDUALS HOME RANGES (BUKIT BOLOH STUDY AREA) AND COMPLETE AREA TRACKED

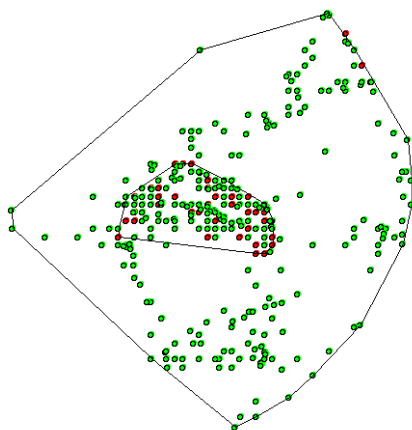
Home Range and Biotope-Map



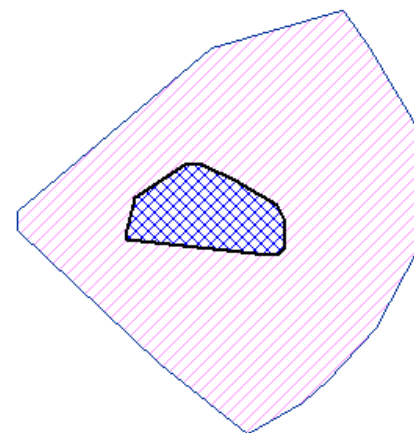
Complete Area (Individuals Tracked)



Waypoints Taken by using GPS 12 XL Garmin



Individual Home Range Identified by Color

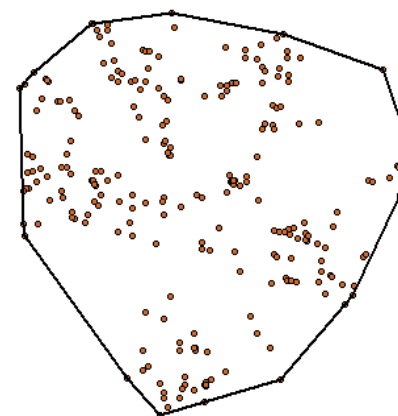


ANALYSIS RANGING INDIVIDUAL MALE “AGGRESSIVE ”

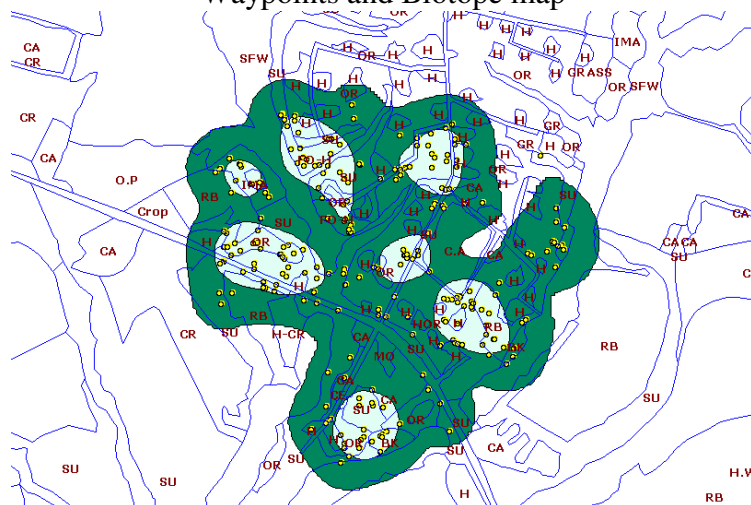
Satellite Image and Individual Home Range MCP %



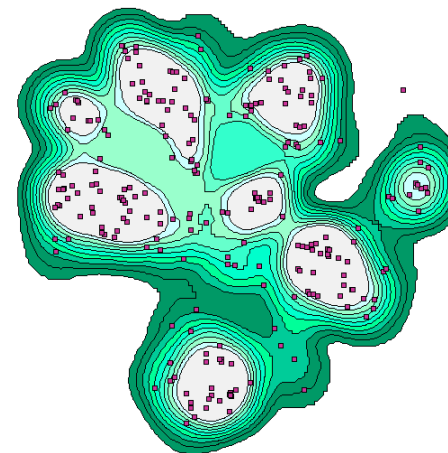
Waypoints and MCP 100% = 43.5874 ha

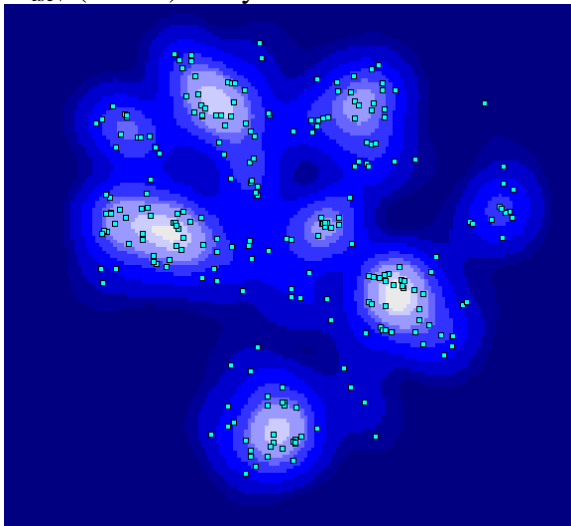
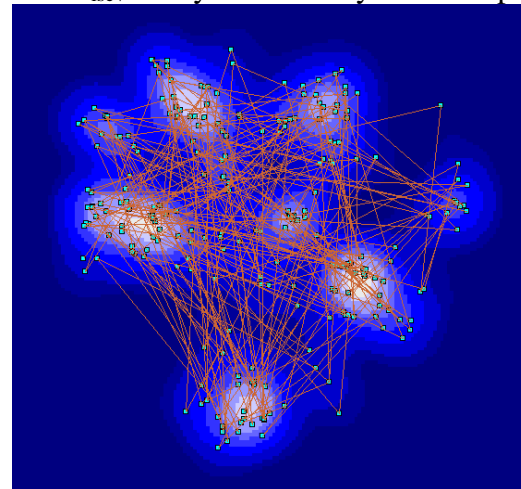
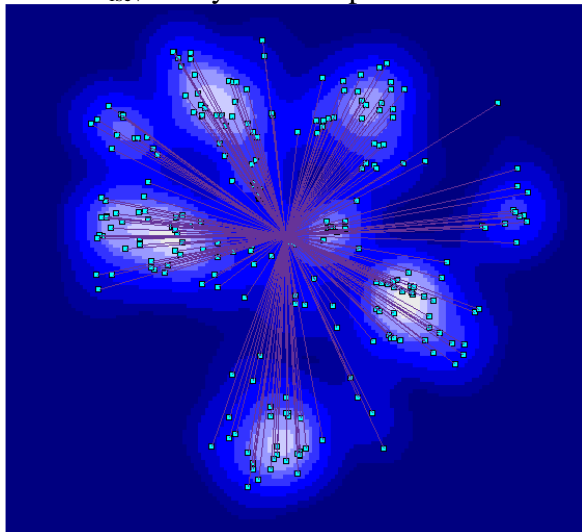


Areas of probability contours KDE with h_{ref} 95 % and 50 %, Waypoints and Biotope map

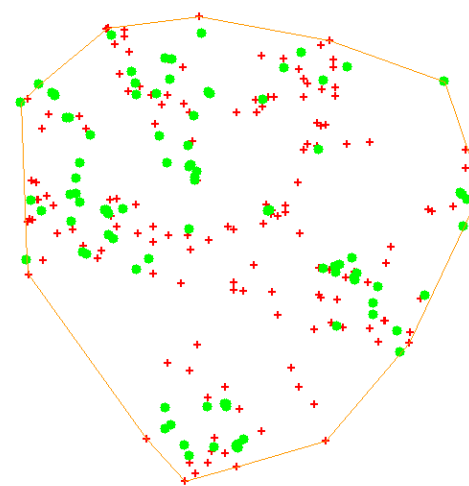


Probability KDE with h_{ref} From 95 % To 50 % “Core Area”

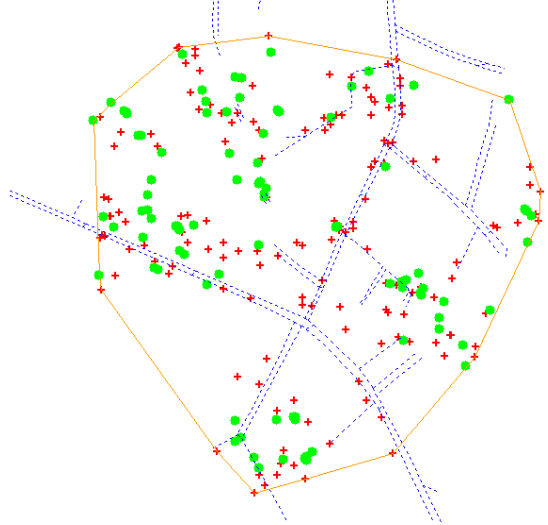
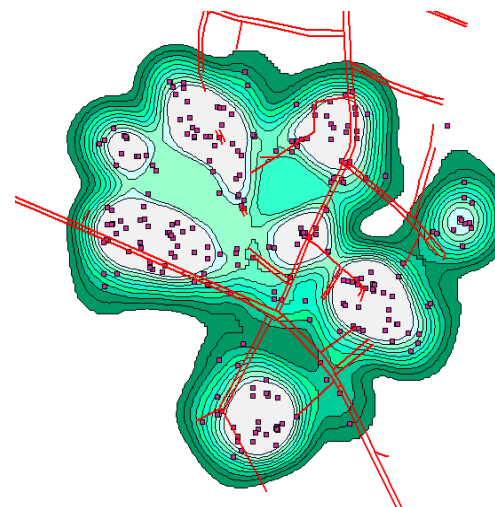


KDE with h_{LSCV} (LSCV) analysis From 95% To 50 % Core AreaKDE with h_{LSCV} Analysis and Polyline from point fileKDE with h_{LSCV} Analysis and Spider Distance analysis

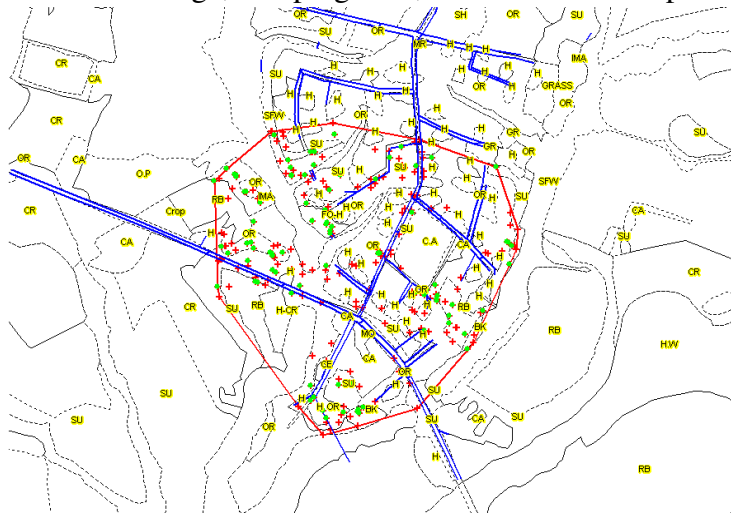
Home Range MCP % and Sleeping Sites (Green Point)



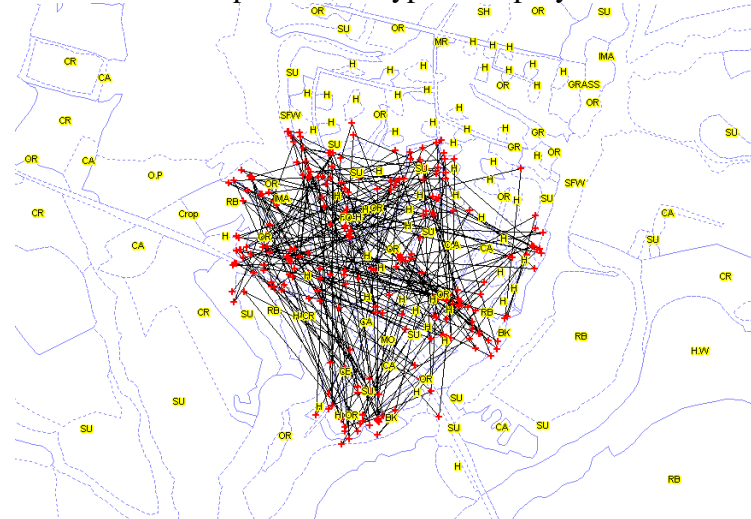
Sleeping sites(Green P.) & Corridor used within Home Range MCP%

KDE with h_{ref} From 95 % To 50 % and Corridors used

Within Home Range; Sleeping sites, Corridors & Biotopes used.



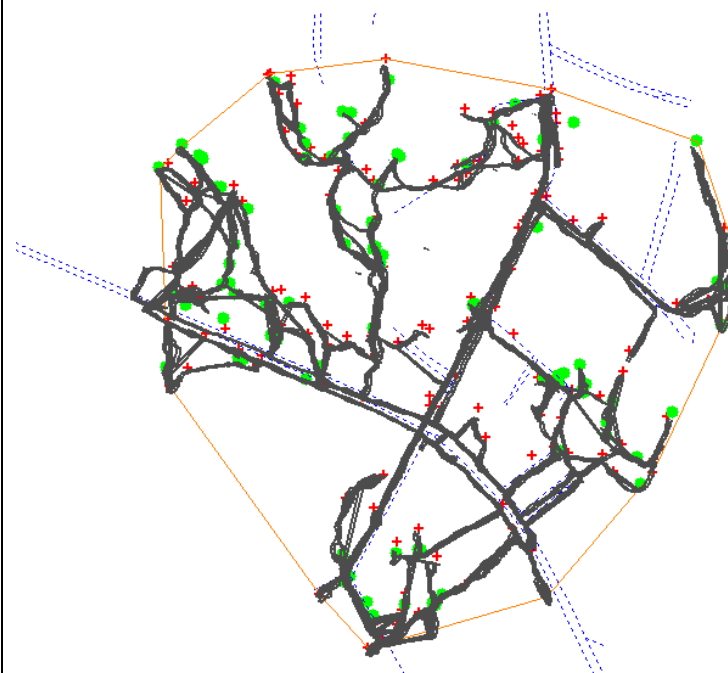
Biotope used, waypoint & polyline



Satellite Image Showing the Actual Movement of individual Aggressive and Home Range MPC %



Actual Movement of the Aggressive Ind Ranging during study (cumulative night range limits); Sleeping sites; Main arboreal, Corridor pathways used & MCP %

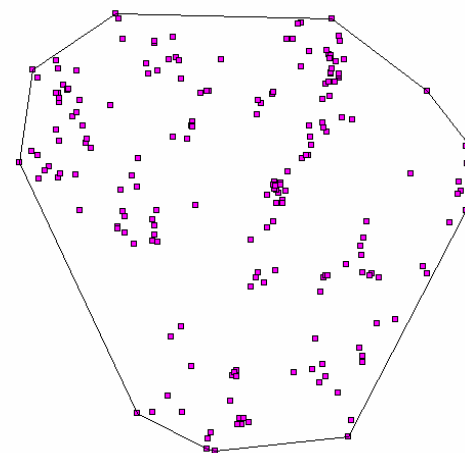
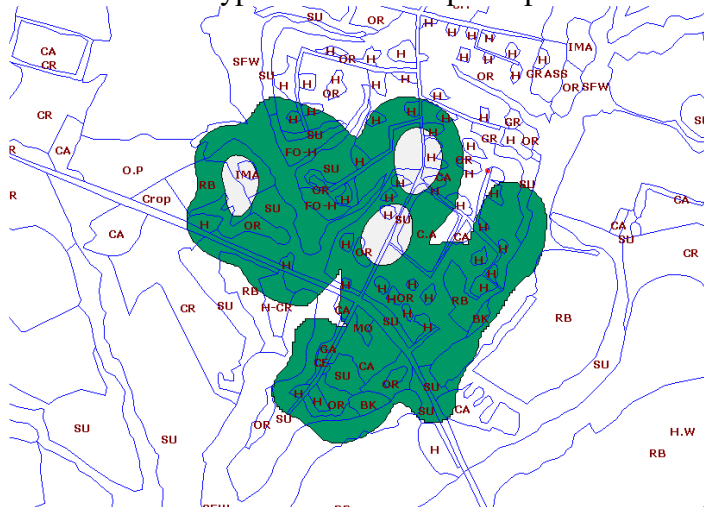
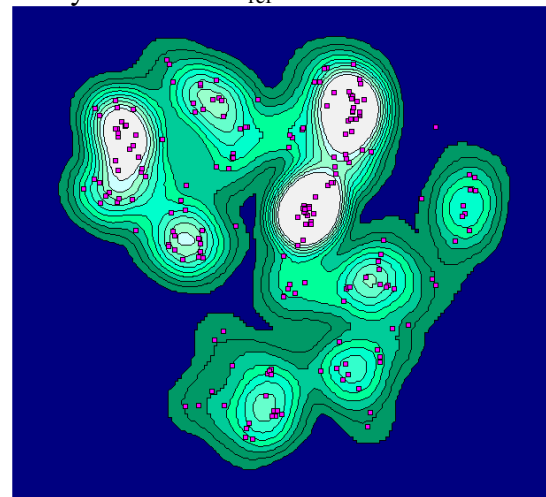


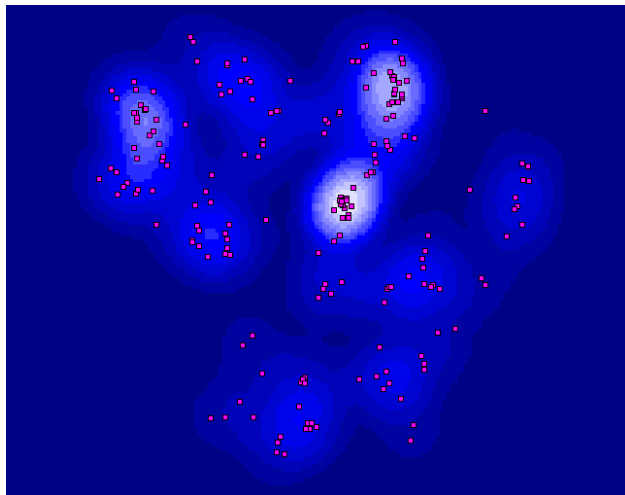
ANALYSIS RANGING INDIVIDUAL FEMALE “TIMIDA ”

Satellite Image and Individual Home Range MCP %

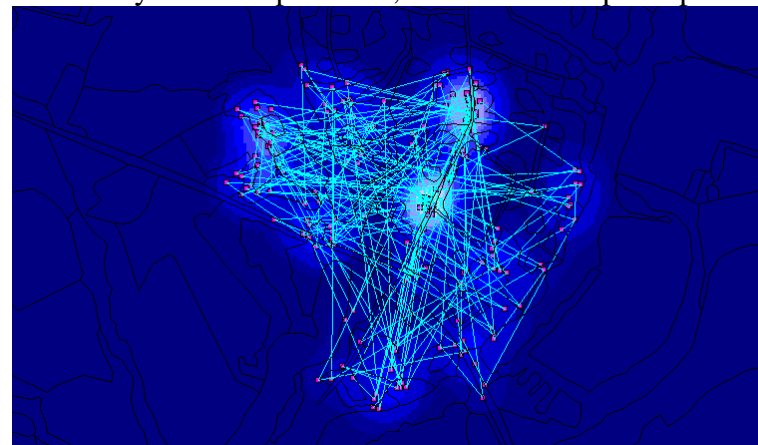
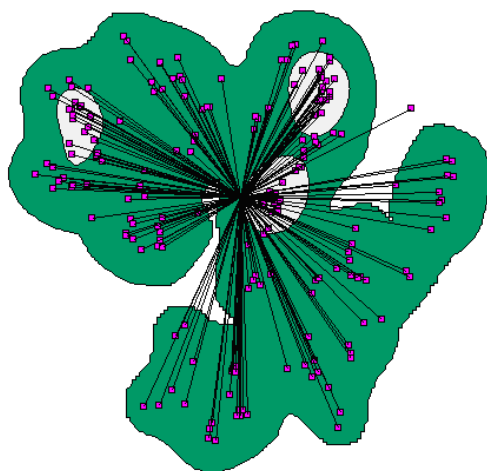


Waypoints and MCP 100% = 41.717 ha

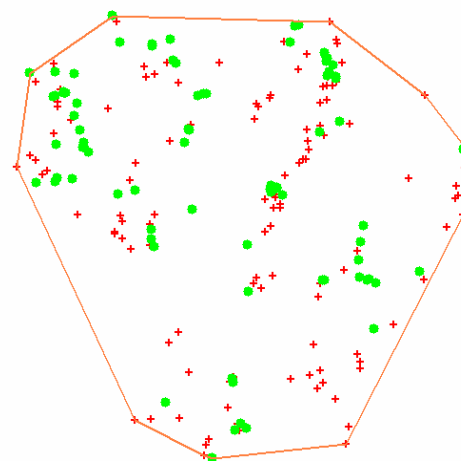
Areas of probability contours KDE with h_{ref} 95 % and 50 %, Waypoints and Biotope mapProbability KDE with h_{ref} From 95 % To 50 % “Core Area

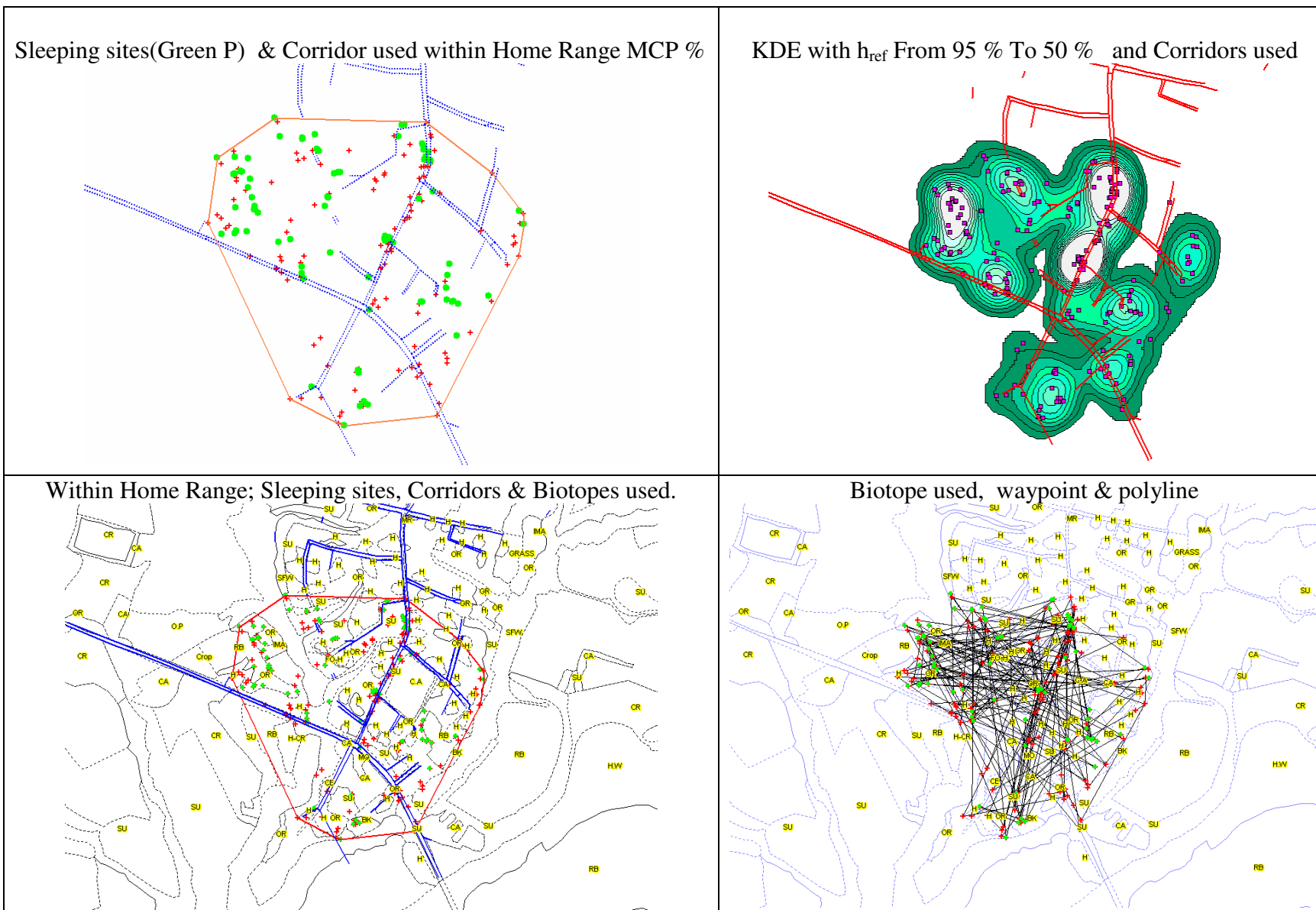
KDE with h_{LSCV} (LSCV) analysis From 95% To 50 % Core Area

Polyline from point file, LSCV & Biotope map

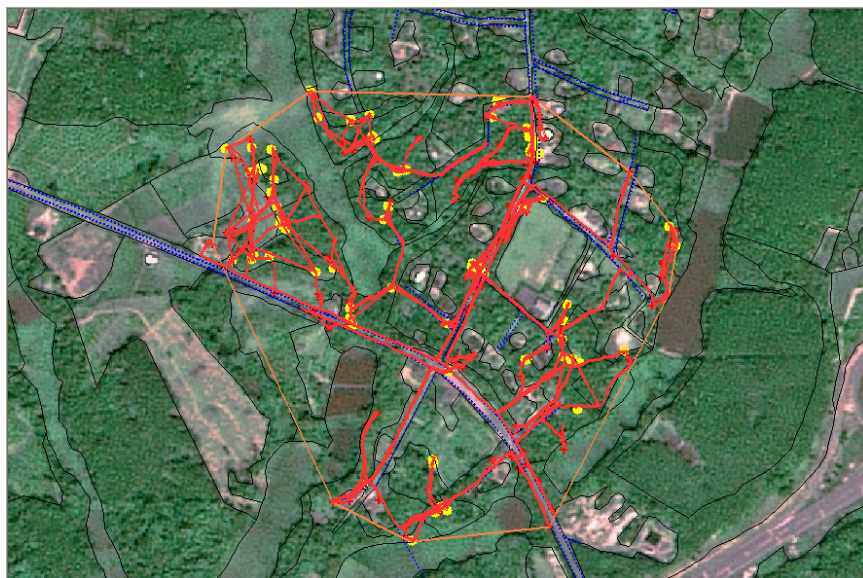
KDE with h_{ref} Analysis (95% & 50 %) and Spider Distance analysis

Home Range MCP % and Sleeping Sites (Green Point)





Satellite Image Showing the Actual Movement of individual Timida and Home range MPC %

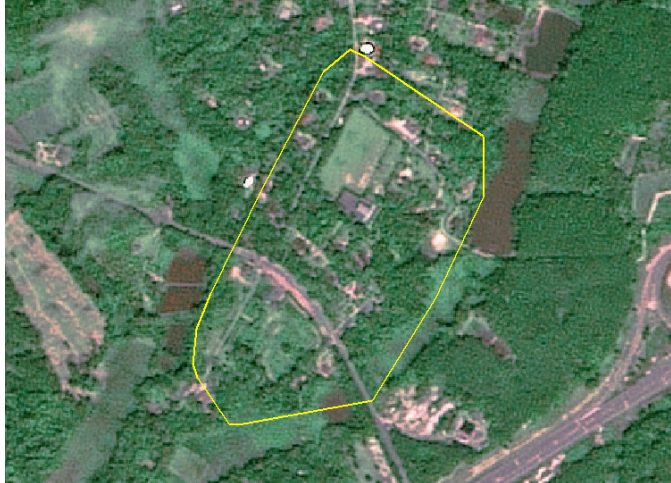


Actual Movement of the Timida Ind.
Ranging during study (cumulative night range limits);
Sleeping sites;
Main arboreal and Corridor pathways used & MCP %

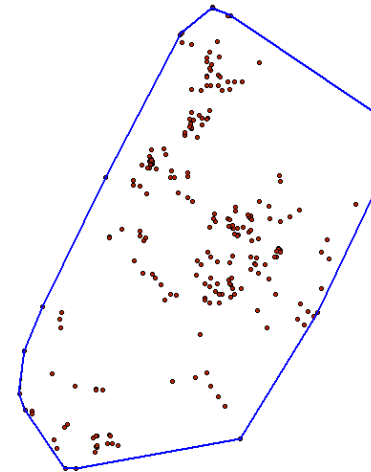


ANALYSIS RANGING INDIVIDUAL FEMALE “HERMOSA ”

Satellite Image and Individual Home Range MCP %



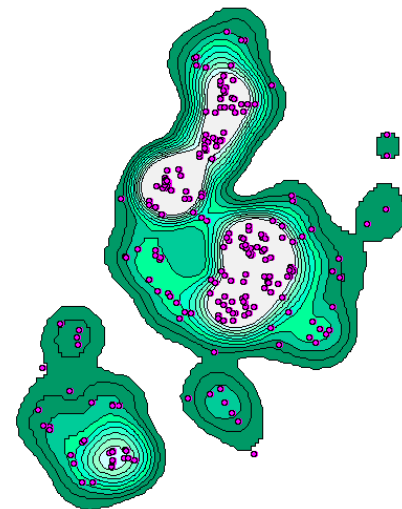
Waypoints and MCP 100% = 20.778 ha

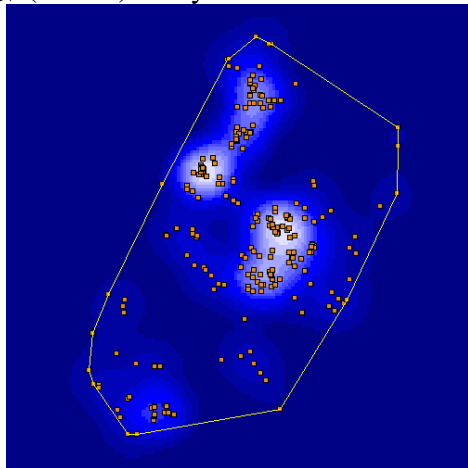
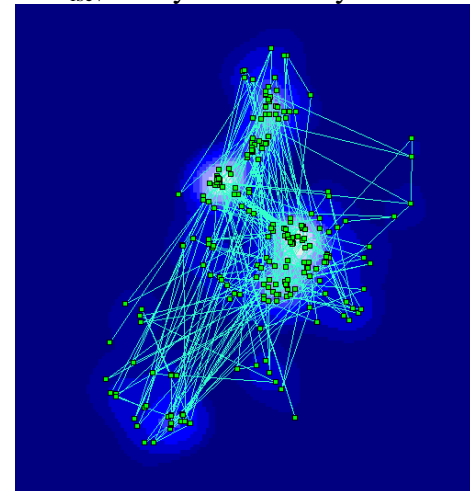
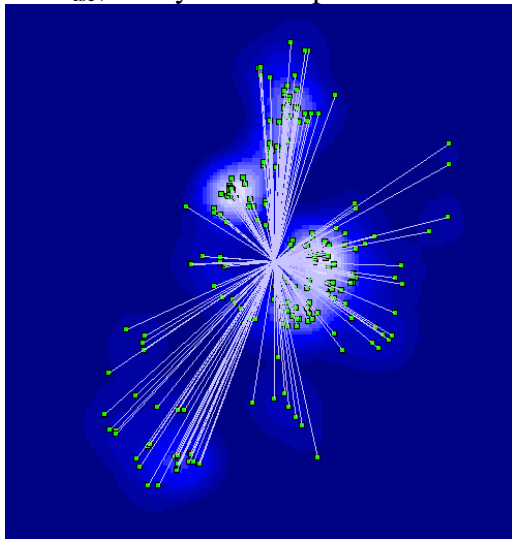


Areas of probability contours KDE with h_{ref} 95 % and 50 %, Waypoints and Biotope map

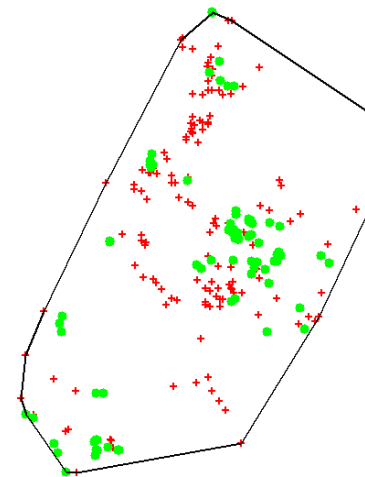


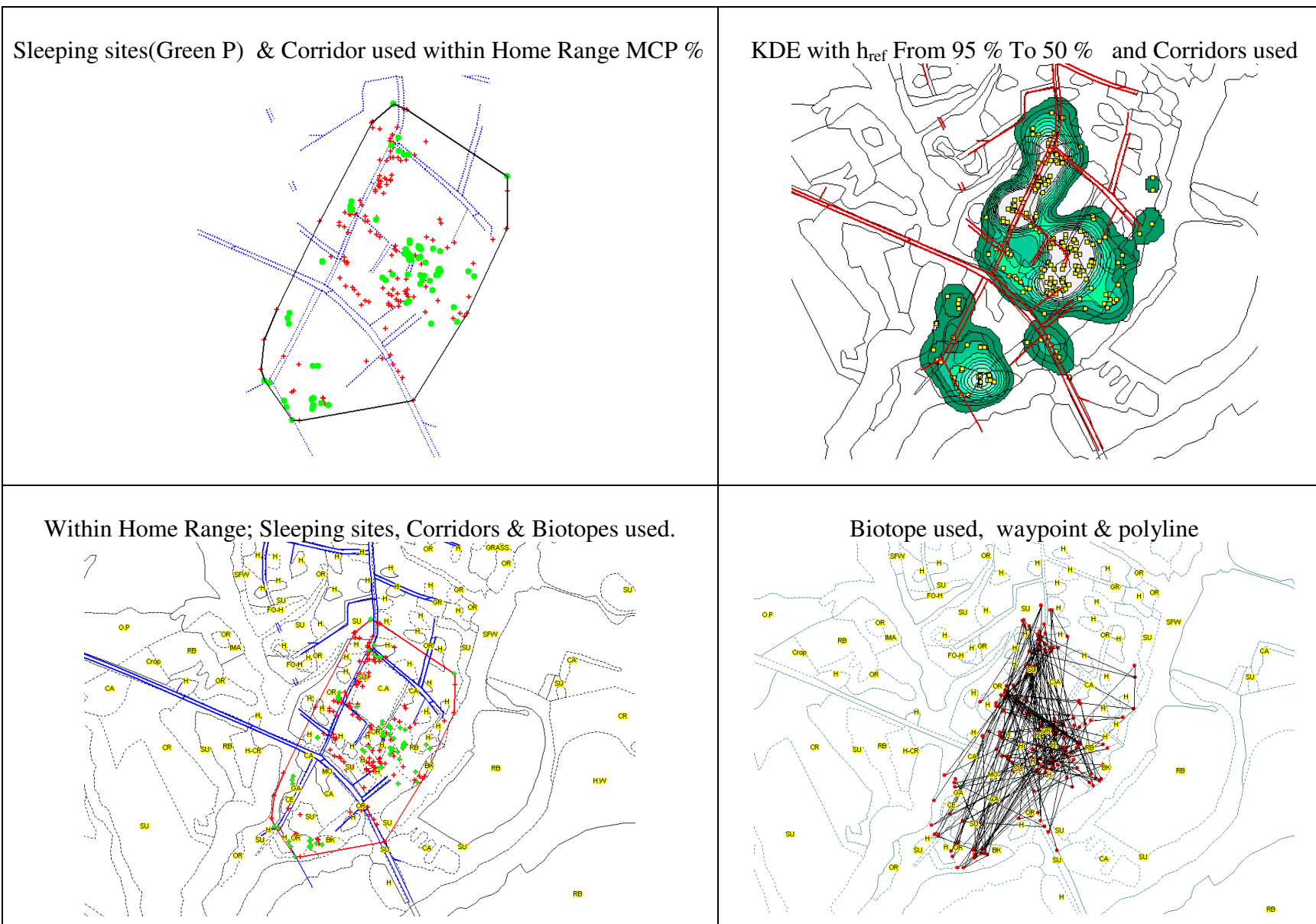
Probability KDE with h_{ref} From 95 % To 50 % “Core Area



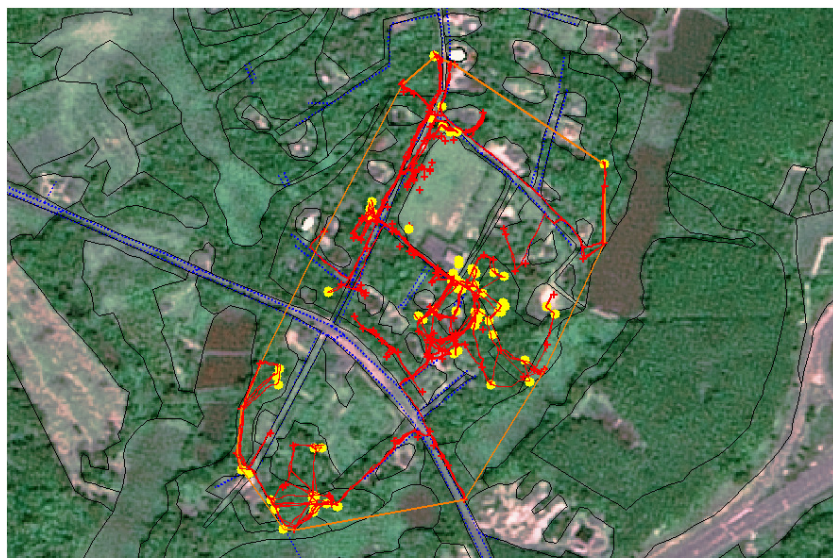
KDE with h_{LSCV} (LSCV) analysis From 95% To 50 % Core AreaKDE with h_{LSCV} Analysis and Polyline from point fileKDE with h_{LSCV} Analysis and Spider Distance analysis

Home Range MCP % and Sleeping Sites (Green Point)

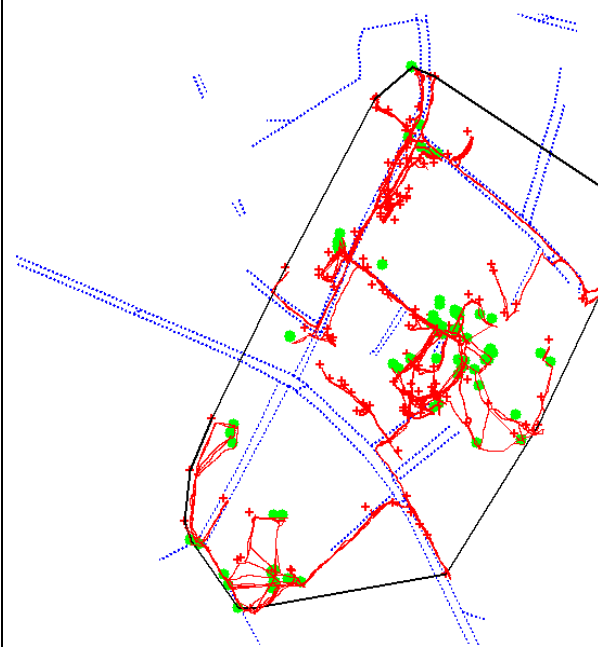




Satellite Image Showing the Actual Movement of individual Hermosa and Home Range MPC %



Actual Movement of the Hermosa Ind Ranging during study (cumulative night range limits);
Sleeping sites;
Main arboreal and Corridor pathways used & MCP %

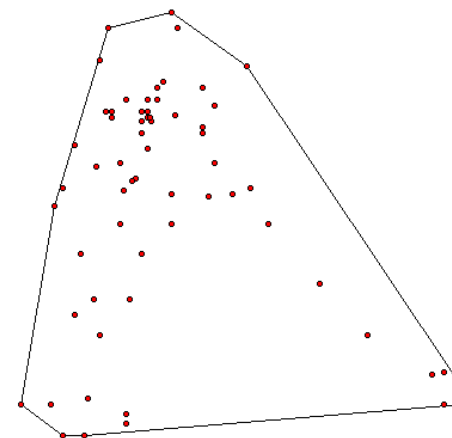
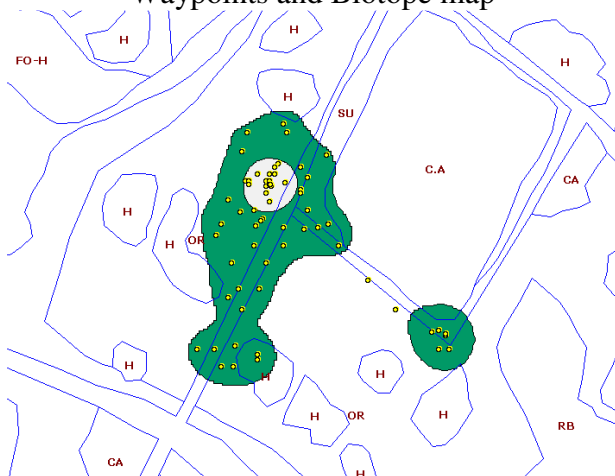


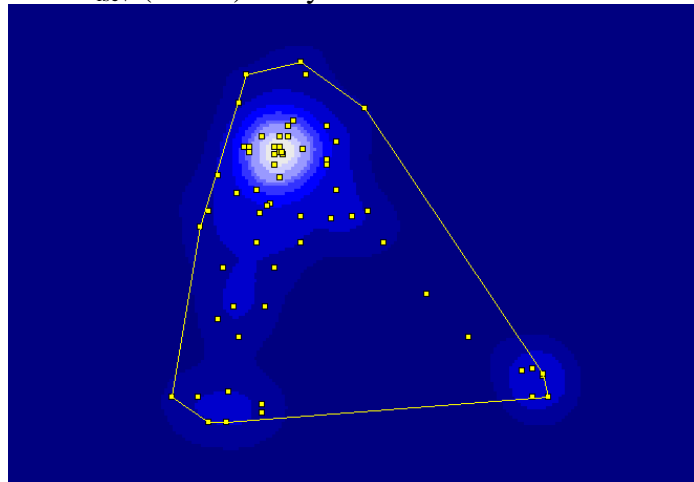
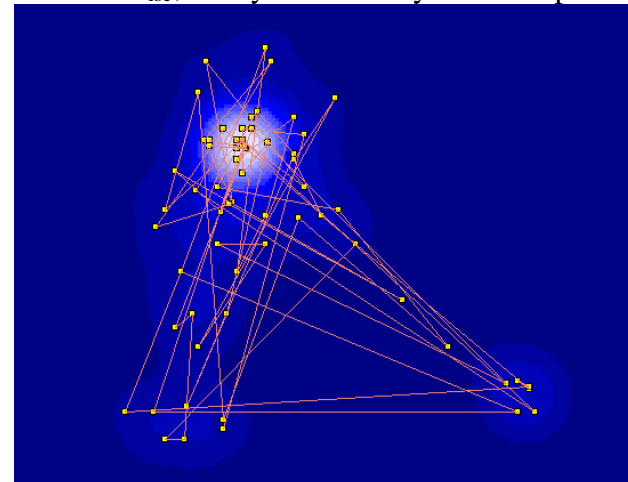
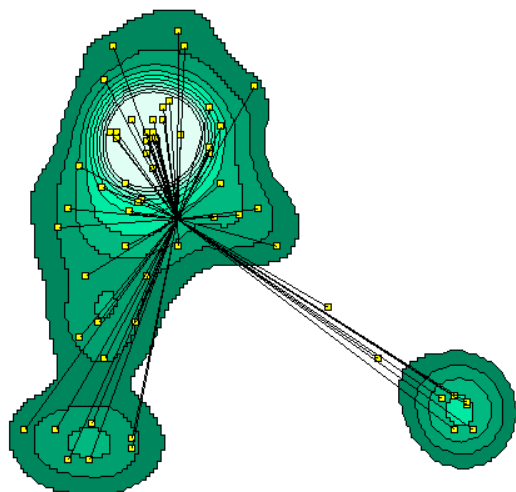
ANALYSIS RANGING INDIVIDUAL MALE “LITTLE”

Satellite Image and Individual Home Range MCP %

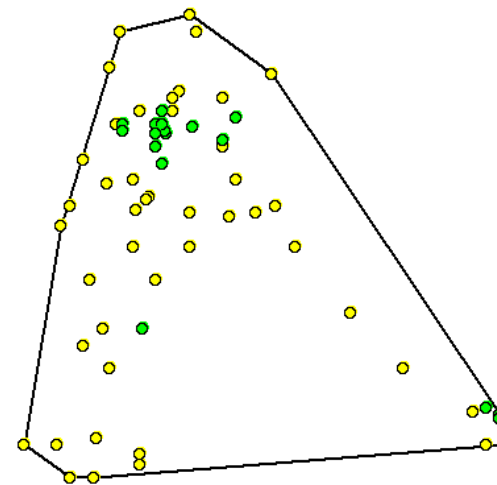


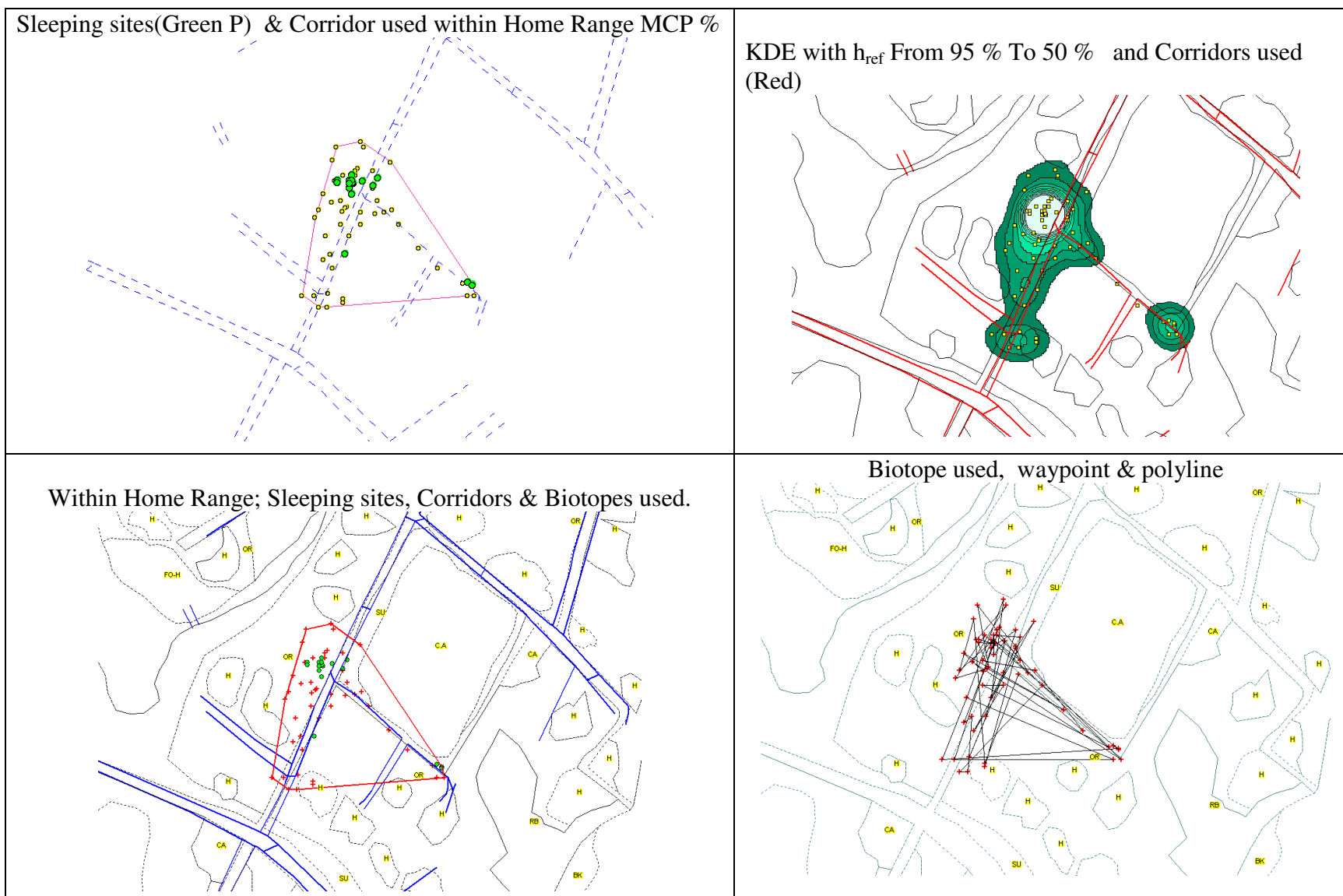
Waypoints and MCP 100% = 1.5679 ha

Areas of probability contours KDE with h_{ref} 95 % and 50 %, Waypoints and Biotope mapProbability KDE with h_{ref} From 95 % To 50 % “Core Area

KDE with h_{LSCV} (LSCV) analysis From 95% To 50 % Core AreaKDE with h_{LSCV} Analysis and Polyline from point fileKDE with h_{ref} Analysis From 95% To 50 % and Spider Distance analysis

Home Range MCP % and Sleeping Sites (Green Point)

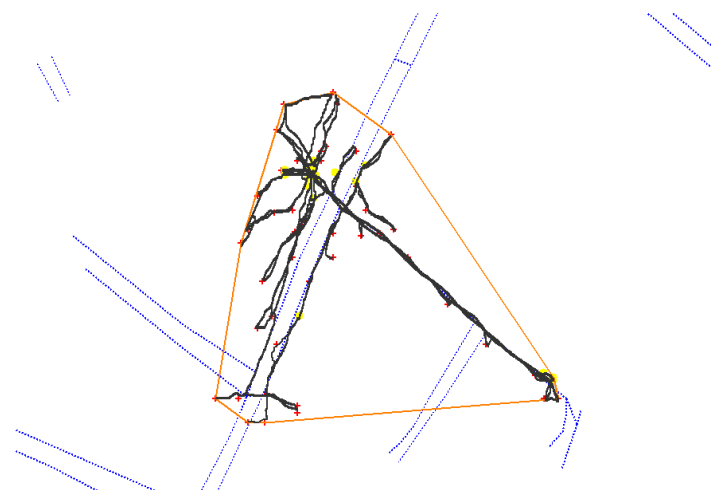




Satellite Image Showing the Actual Movement of individual Little and Homerange MCP %



Actual Movement of the Little Ranging during study (cumulative night range limits); Sleeping sites; Main arboreal and Corridor pathways used & MCP %

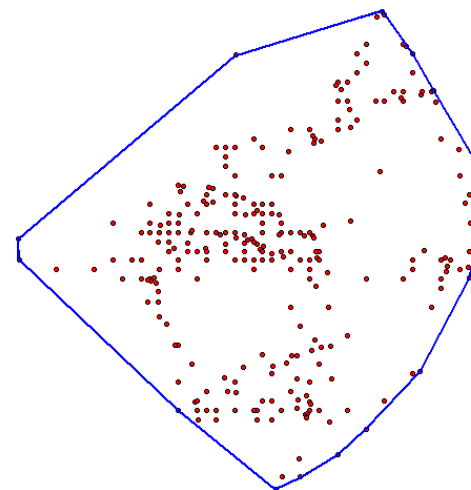
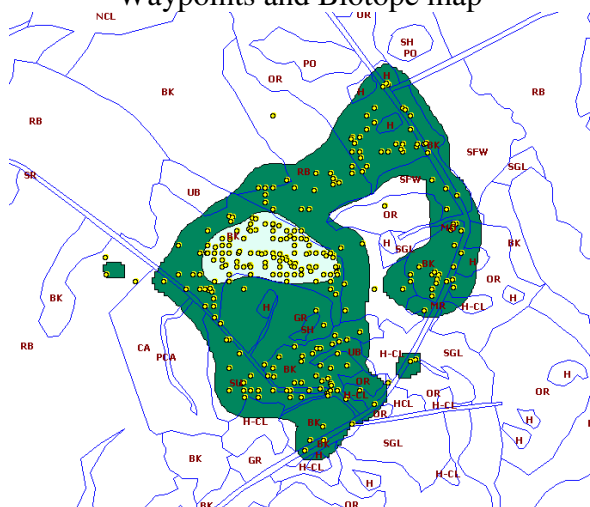
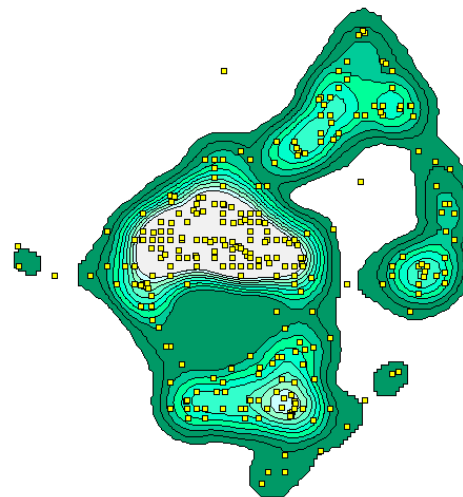


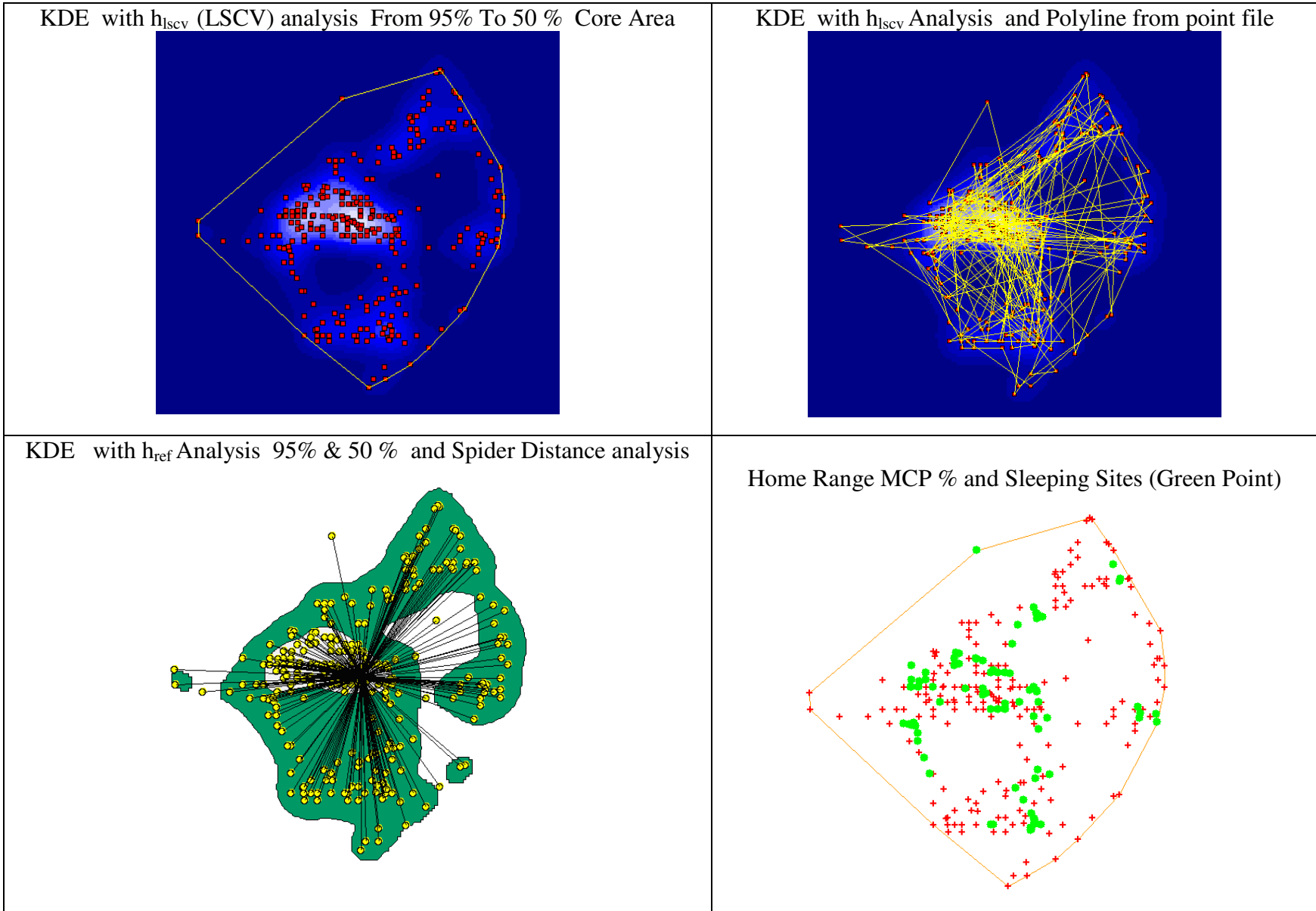
ANALYSIS RANGING INDIVIDUAL FEMALE "LINDA "

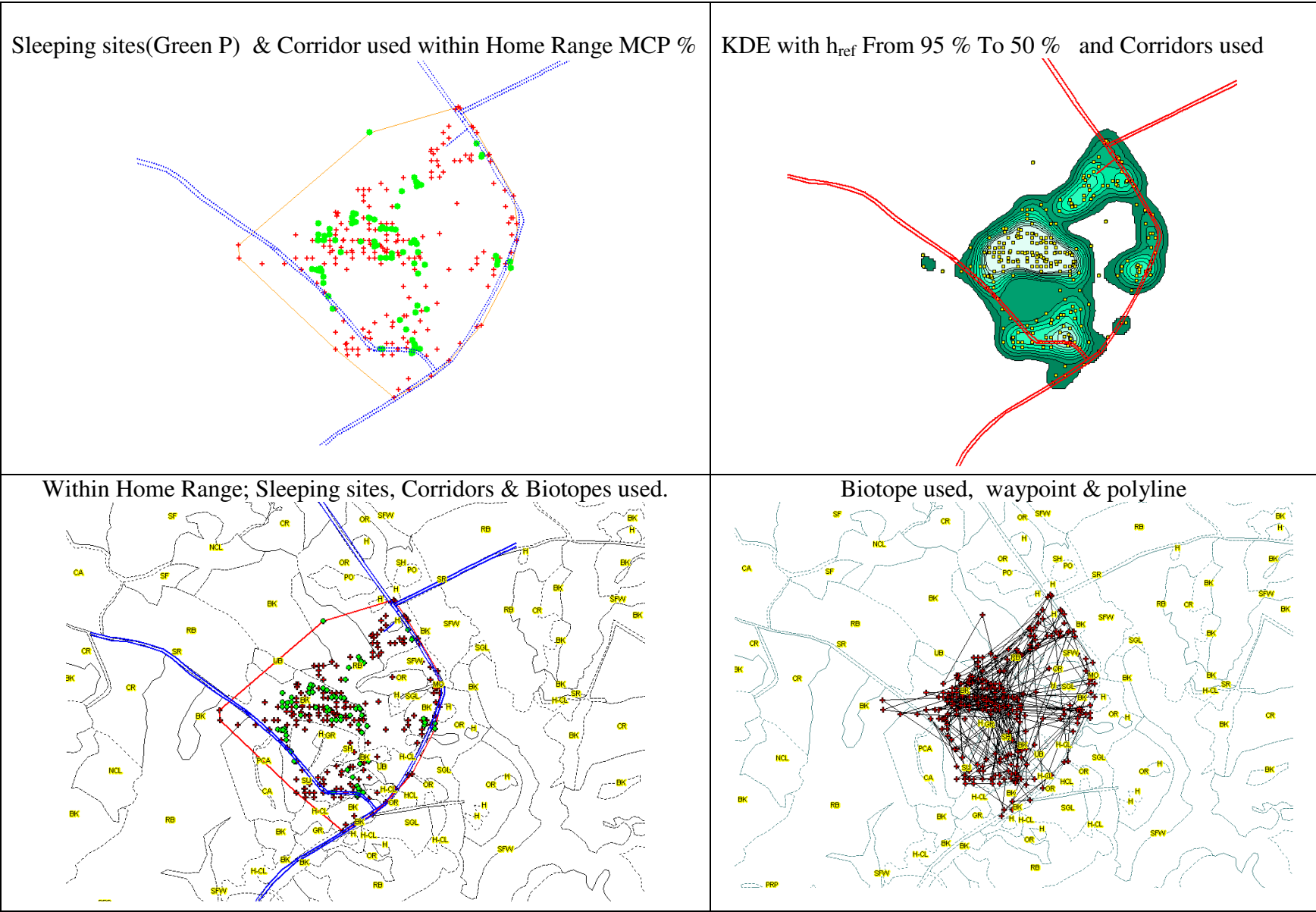
Satellite Image and Individual Home Range



Waypoints and MCP 100% = 18.7638 ha

Areas of probability contours KDE with h_{ref} 95 % and 50 %, Waypoints and Biotope mapKDE with h_{ref} From 95 % To 50 % "Core Area"





Satellite Image Showing the Actual Movement of individual
Linda and Home Range MPC %



Actual Movement of the Linda
Ranging during study (cumulative night range limits);
Sleeping sites; Home Range
Main arboreal and Corridor pathways used & MCP %

