

Method/ Standard

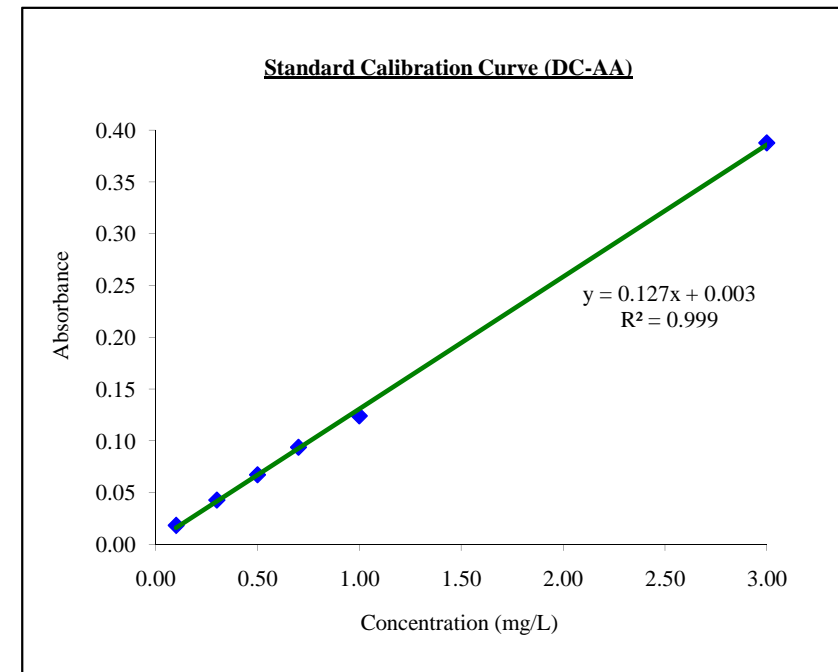
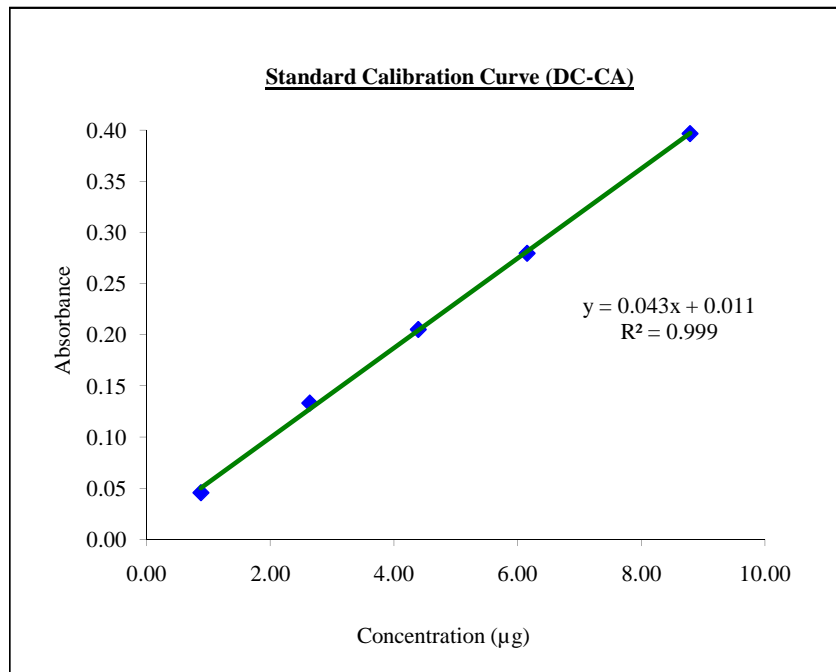
: DC-CA / ASTM 5582-00

No.	[HCHO] (µg)	Absorbance- 580 nm				AVG
		1	2	3	4	
1	0	0.0030	0.0030	0.0027	0.0025	0
2	0.9	0.0450	0.0460	0.0450	0.0460	0.046
3	2.6	0.1330	0.1330	0.1330	0.1330	0.133
4	4.4	0.2040	0.2060	0.2040	0.2060	0.205
5	6.2	0.2790	0.2800	0.2790	0.2800	0.280
6	8.8	0.4070	0.3860	0.4070	0.3860	0.397

Method/ Standard

: DC-AA / JAS 233

No.	[HCHO] (mg)	Absorbance- 412 nm				AVG
		1	2	3	4	
1	0	0.0085	0.0082	0.0083	0.0082	0.0083
2	0.1	0.0183	0.0179	0.0187	0.0179	0.0182
3	0.3	0.0430	0.0432	0.0423	0.0426	0.0428
4	0.5	0.0682	0.0684	0.0653	0.0663	0.0671
5	0.7	0.0953	0.0953	0.0922	0.0927	0.0939
6	1.0	0.1223	0.1225	0.1254	0.1257	0.1240
7	3.0	0.3929	0.3933	0.3821	0.3822	0.3876



Calibration Curve

Appendix B

Method/ Standard

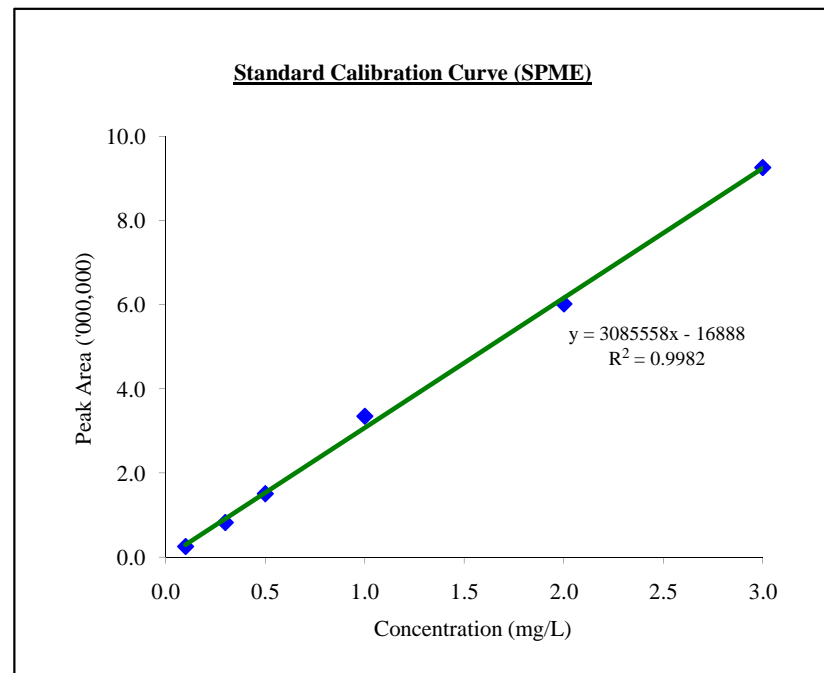
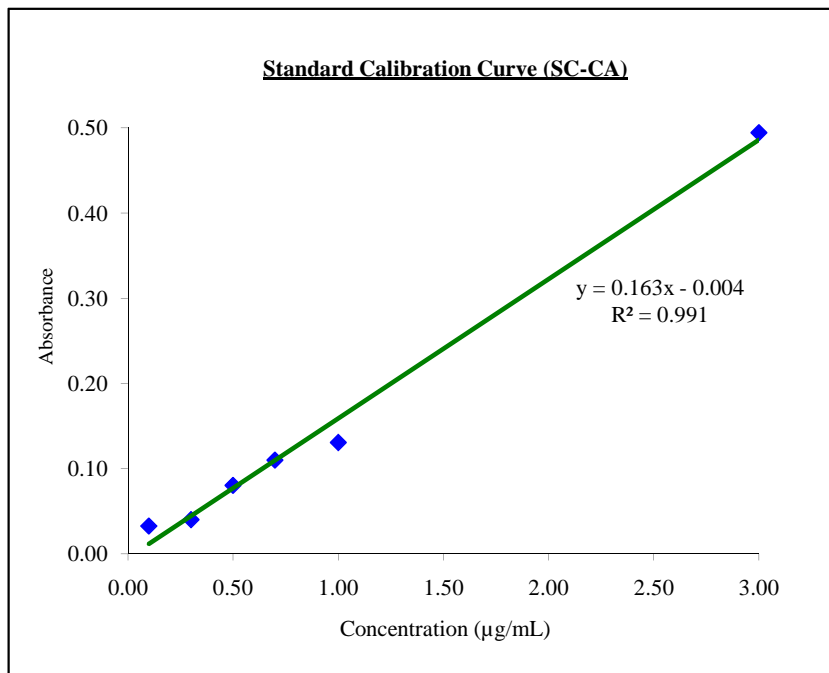
: SC-CA / ASTM 6007

No.	[HCHO] (µg)	Absorbance- 580 nm				AVG
		1	2	3	4	
1	0	0.0268	0.0270	0.0275	0.0269	0.027
2	0.1	0.0325	0.0327	0.0331	0.0319	0.033
3	0.3	0.0404	0.0395	0.0405	0.0389	0.040
4	0.5	0.0802	0.0805	0.0799	0.0796	0.080
5	0.7	0.1095	0.1101	0.1105	0.1094	0.110
6	1.0	0.1298	0.1293	0.1314	0.1312	0.130
7	3.0	0.4950	0.4948	0.4937	0.4935	0.494

Method/ Standard

: SPME

No.	[HCHO] (mg)	Peak area- RT 7.5min		
		1	2	AVG
1	0.0	30459	30455	30457
2	0.1	251653	247239	249446
3	0.3	833083	802112	817598
4	0.5	1504287	1504287	1504287
5	1.0	3334821	3362518	3348670
6	2.0	5988307	6045448	6016878
7	3.0	9252150	9252150	9252150



Calibration Curve

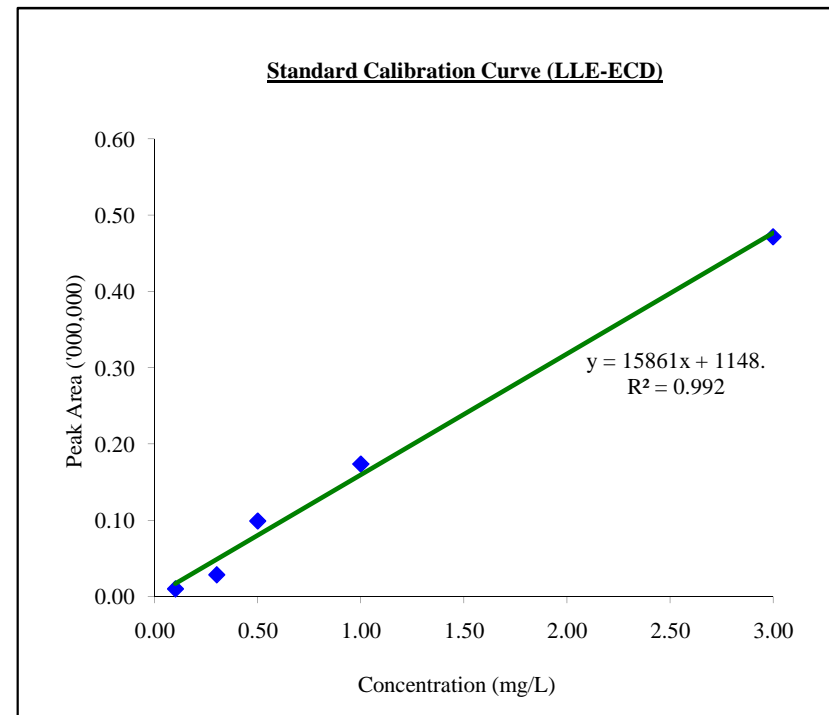
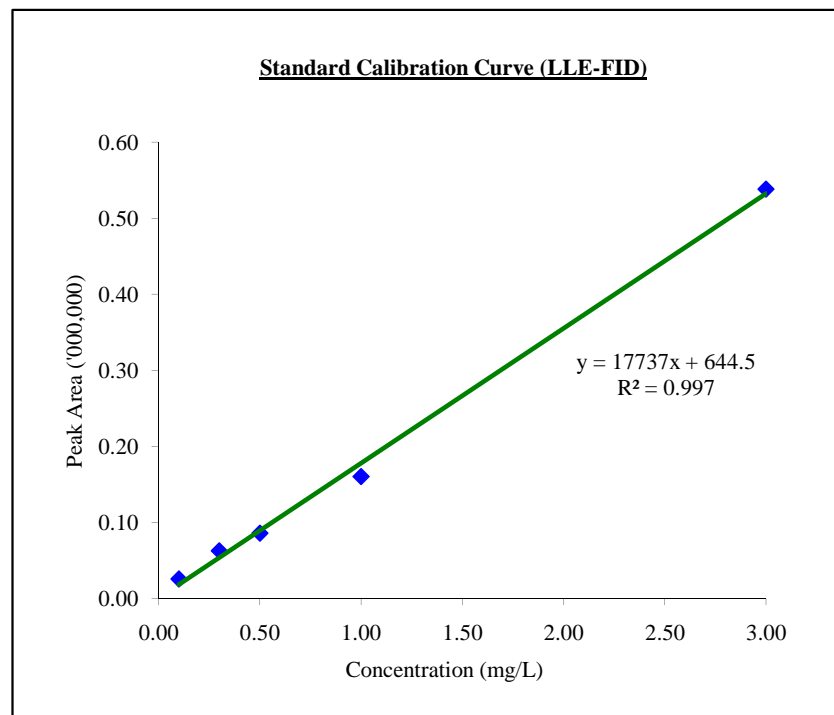
Appendix B

Method/ Standard : LLE-FID

No.	[HCHO] (mg)	Peak area- RT 7.5min		
		1	2	AVG
1	0	6006	6245	6126
2	0.1	22891	27972	25432
3	0.3	62701	62450	62576
4	0.5	85230	86507	85869
5	1.0	159418	161291	160355
6	3.0	537279	538969	538124

Method/ Standard : LLE-ECD

No.	[HCHO] (mg)	Peak area- RT 7.5min		
		1	2	AVG
1	0	7836	8033	7935
2	0.1	10028	10094	10061
3	0.3	29006	28077	28542
4	0.5	98290	99821	99056
5	1.0	175393	172318	173856
6	3.0	479037	463874	471456



Calibration Curve

Appendix B