

Figure 2.9 : The chromatogram of leaves of *Alpinia conchigera* (A1)

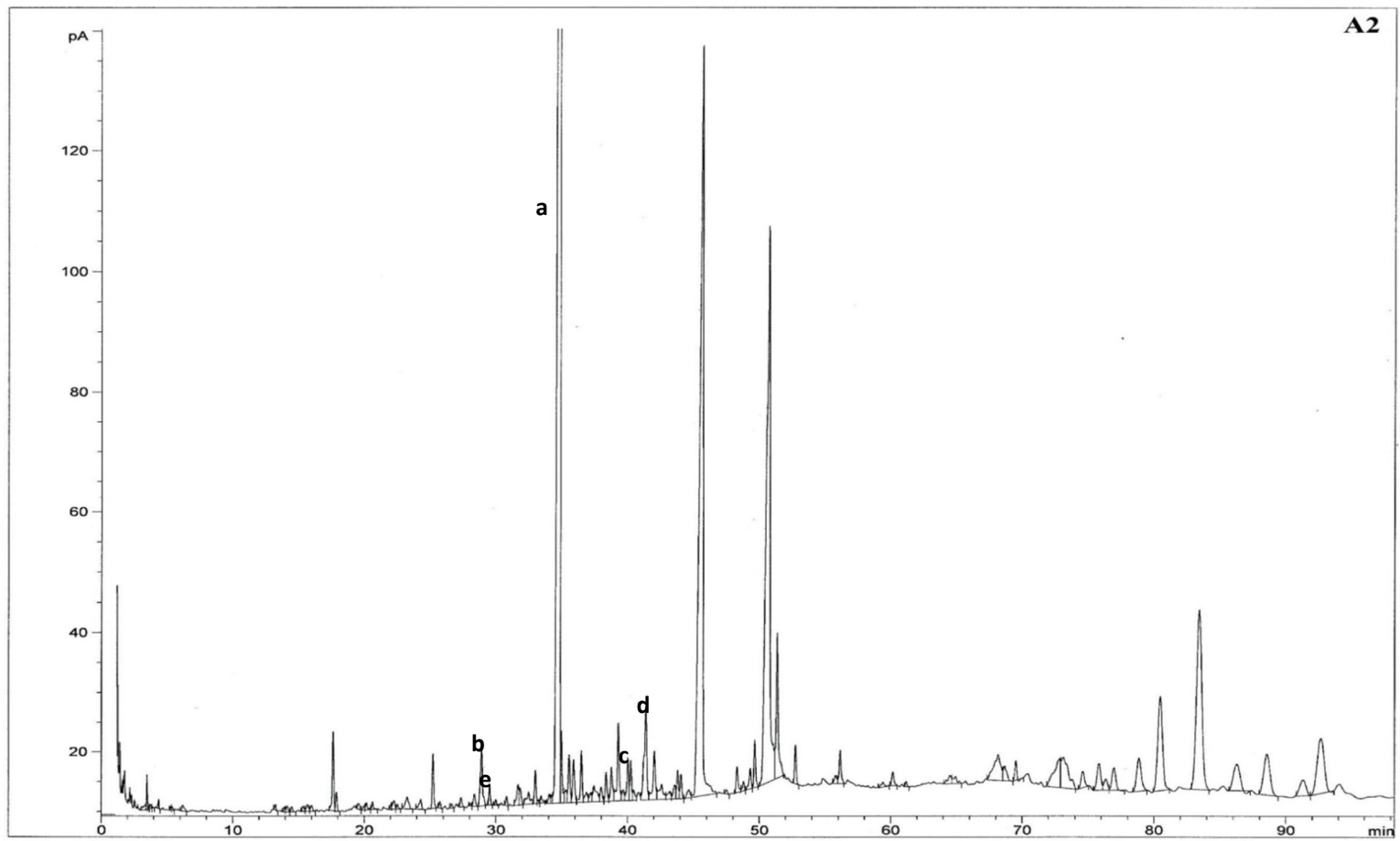


Figure 2.10 : The chromatogram of leaves of *Alpinia conchigera* (A2)

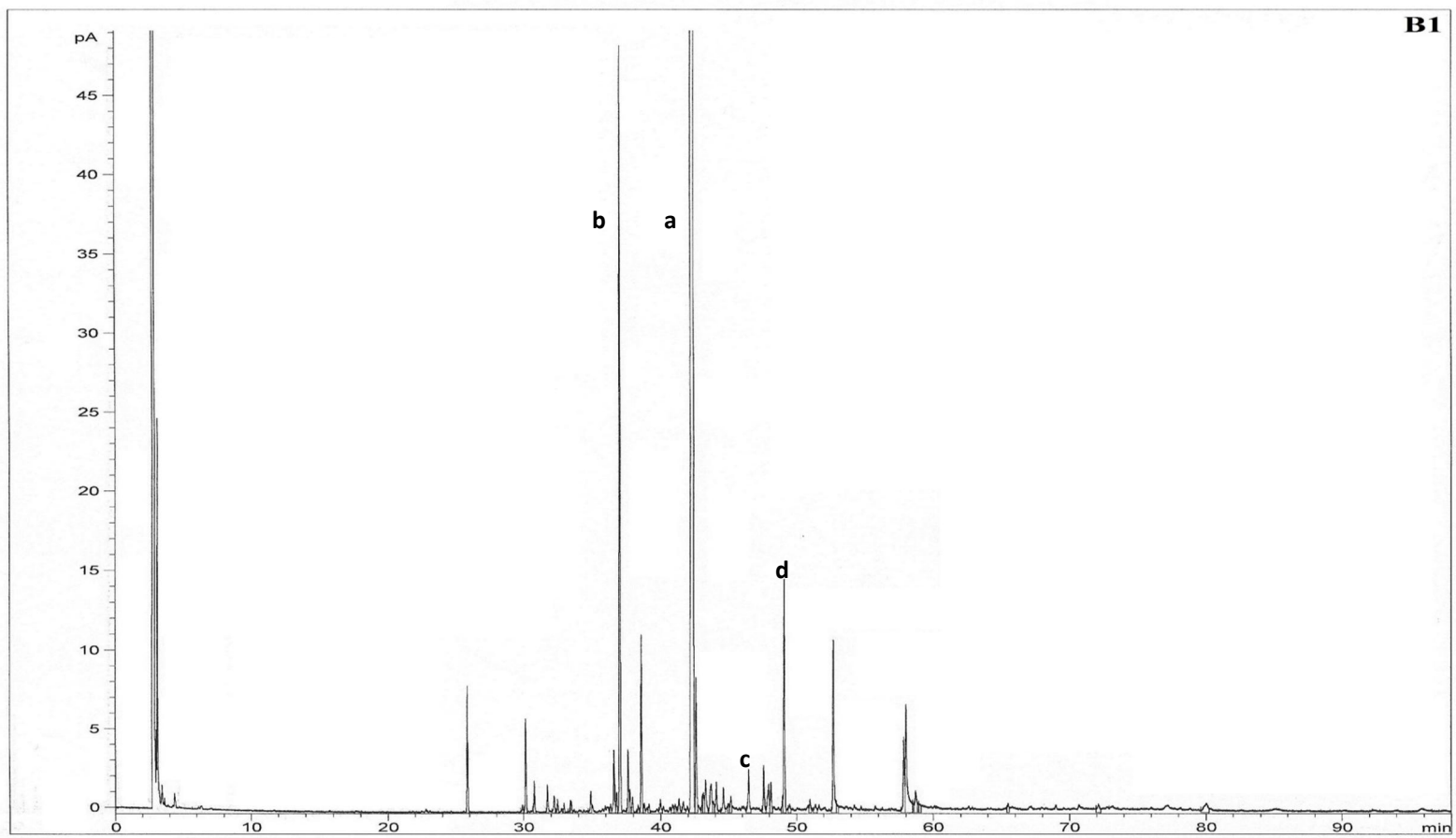


Figure 2.11 : The chromatogram of rhizomes of *Alpinia conchigera* (B1)

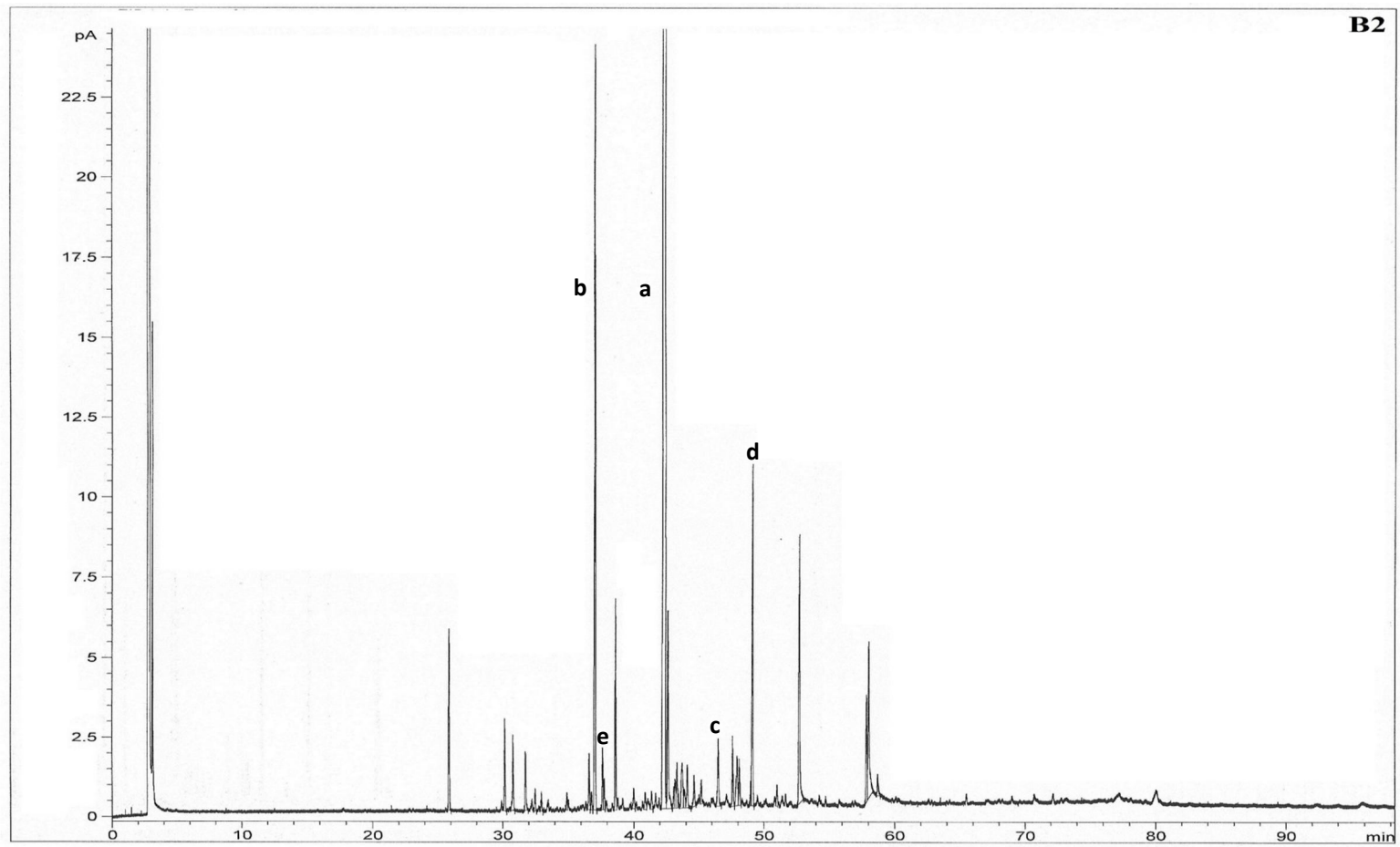


Figure 2.12 : The chromatogram of rhizomes of *Alpinia conchigera* (B2)

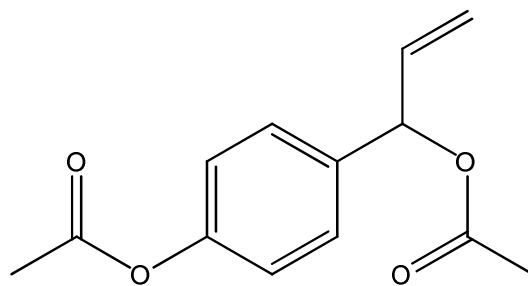


Figure 2.13 : Mass spectrum and structure of acetoxychavicol acetate (**a**)

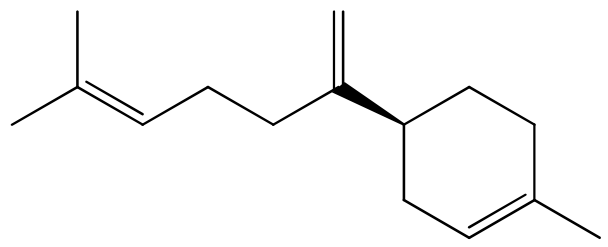
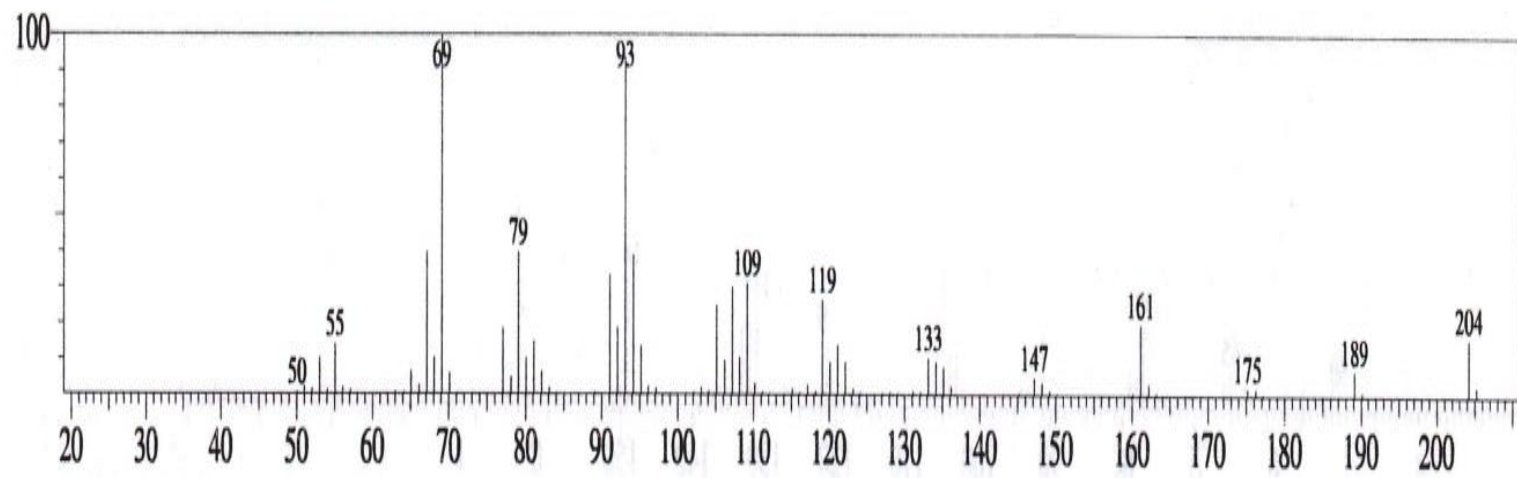


Figure 2.14 : Mass spectrum and structure of β -bisabolene (b)

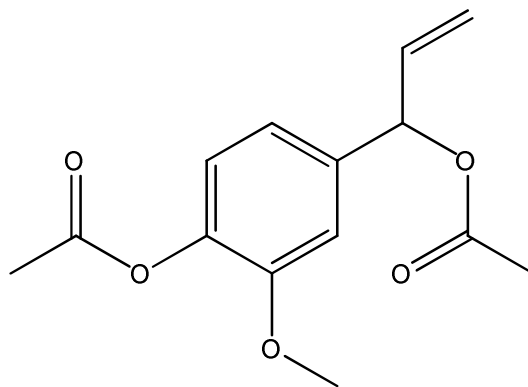


Figure 2.15 : Mass spectrum and structure of acetoxyeugenol acetate (c)

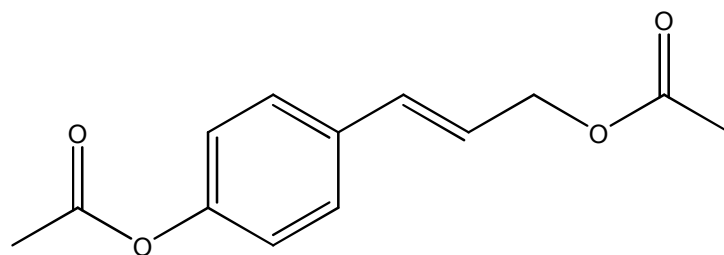
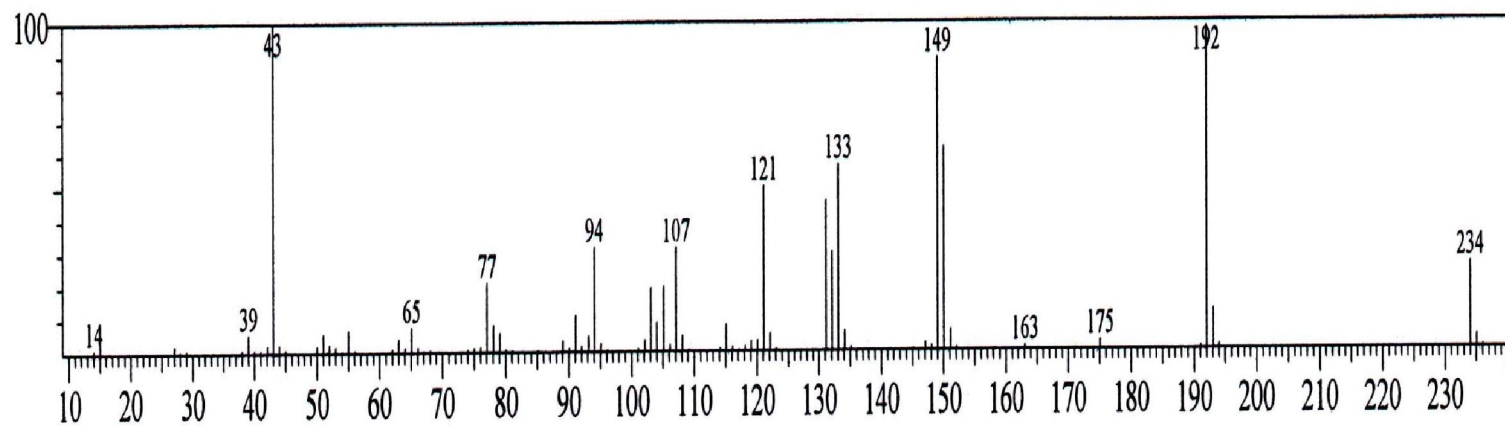


Figure 2.16 : Mass spectrum and structure of *trans-p*-coumaryl diacetate (**d**)

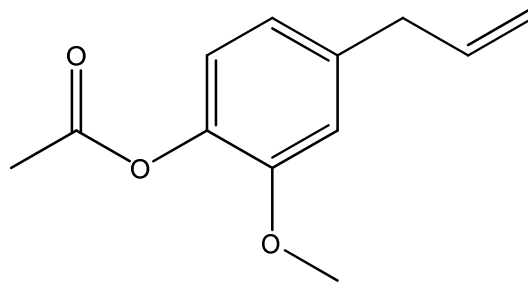


Figure 2.17 : Mass spectrum and structure of eugenol acetate (e)