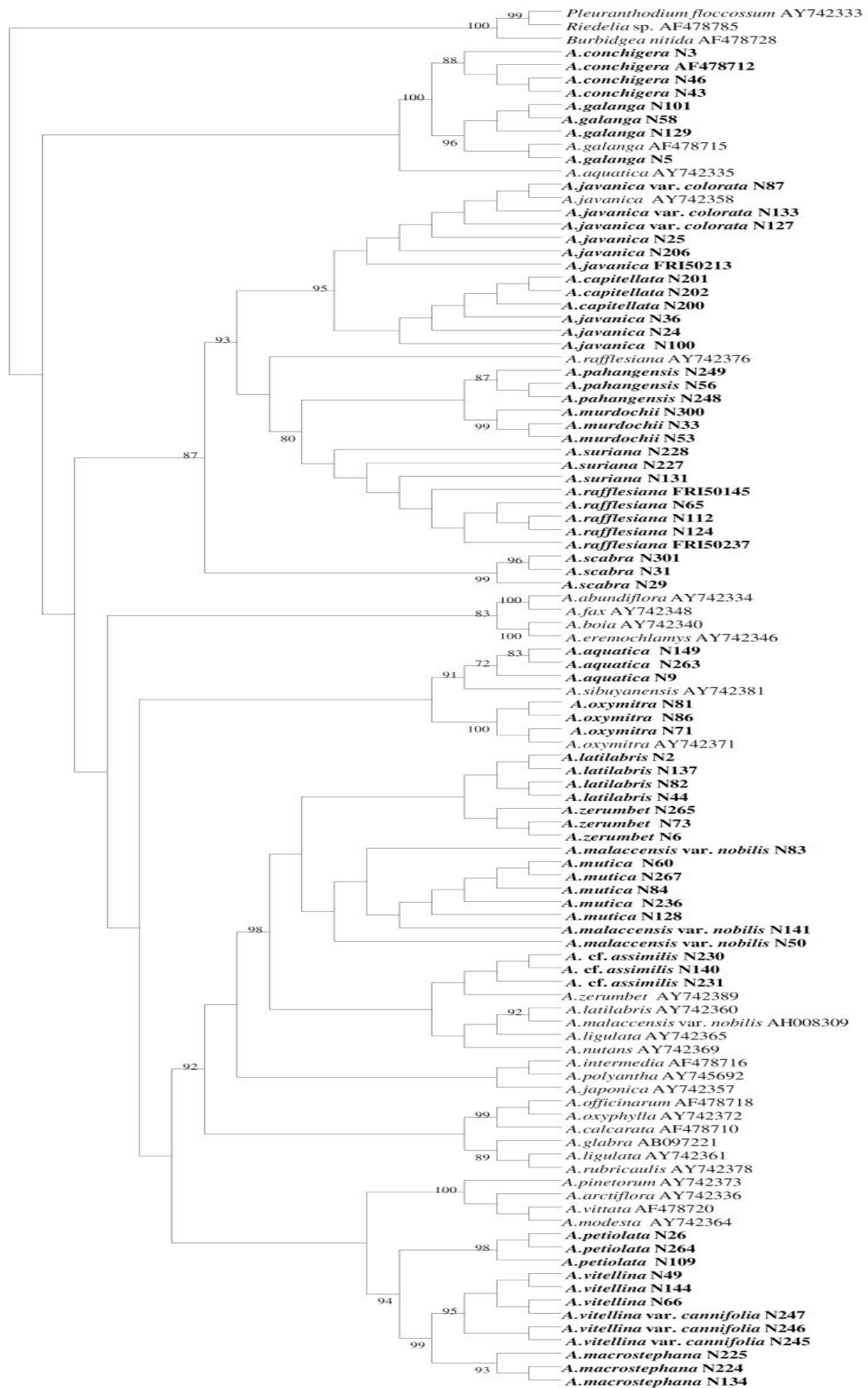
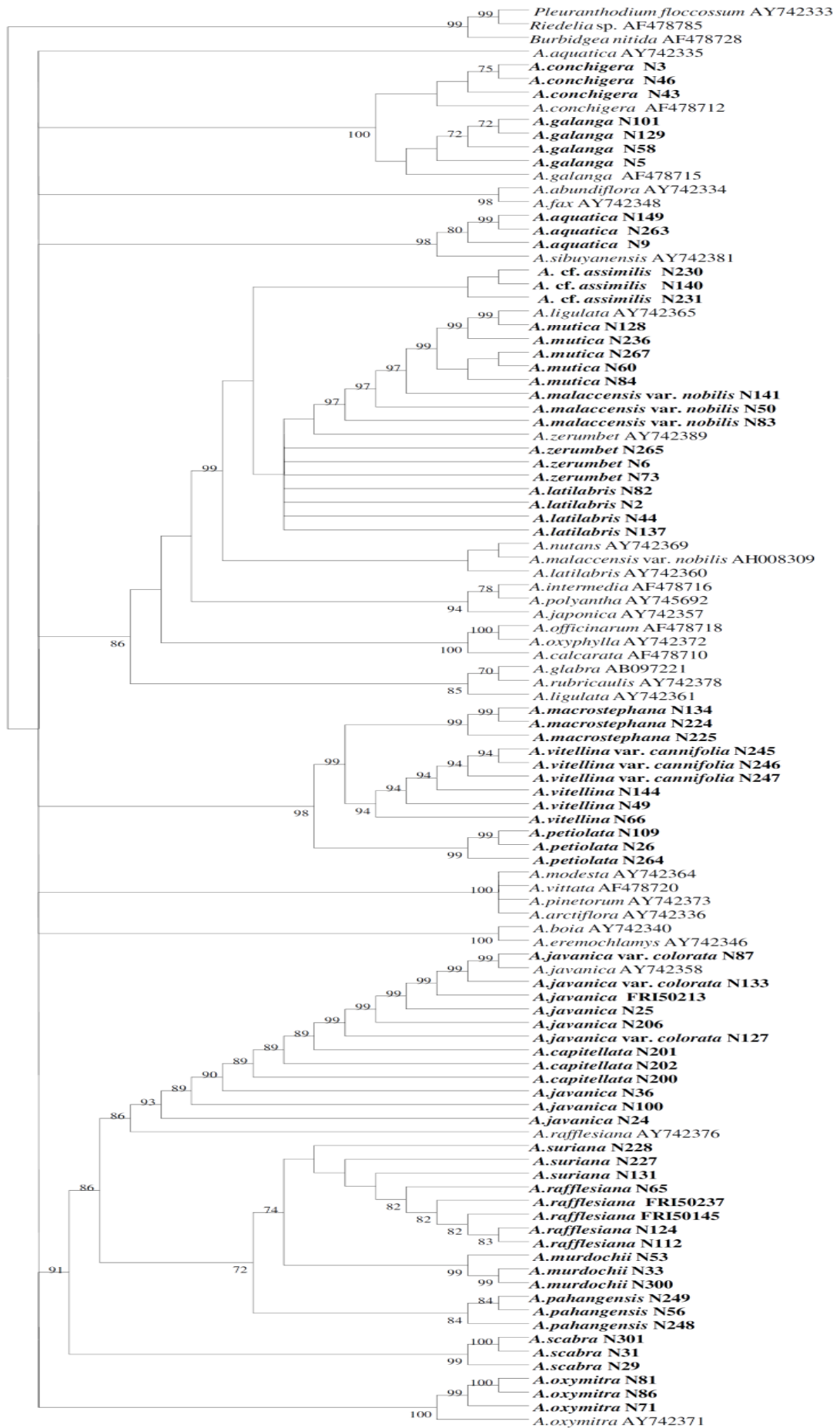


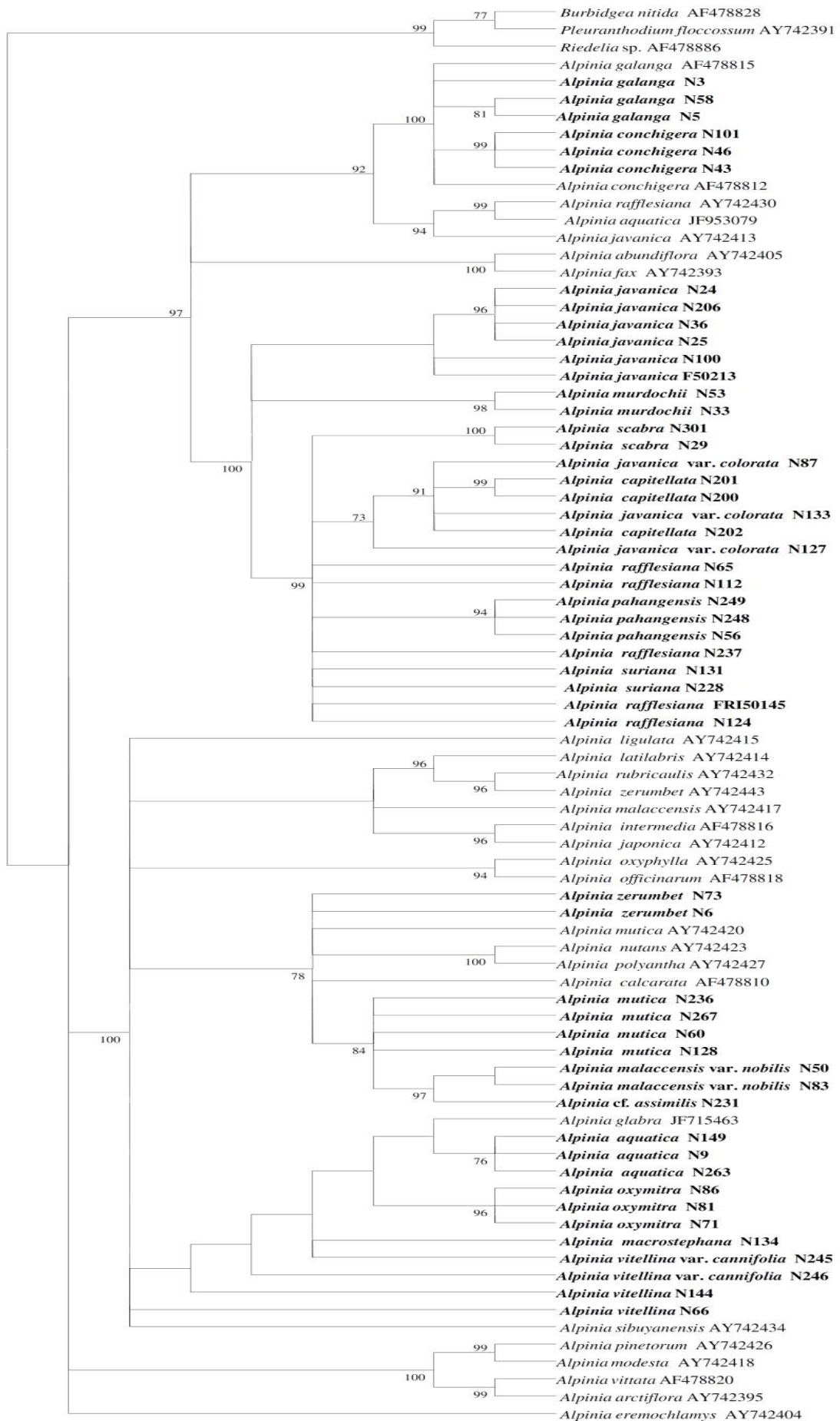
Appendix 5.0 Phylogenetic trees



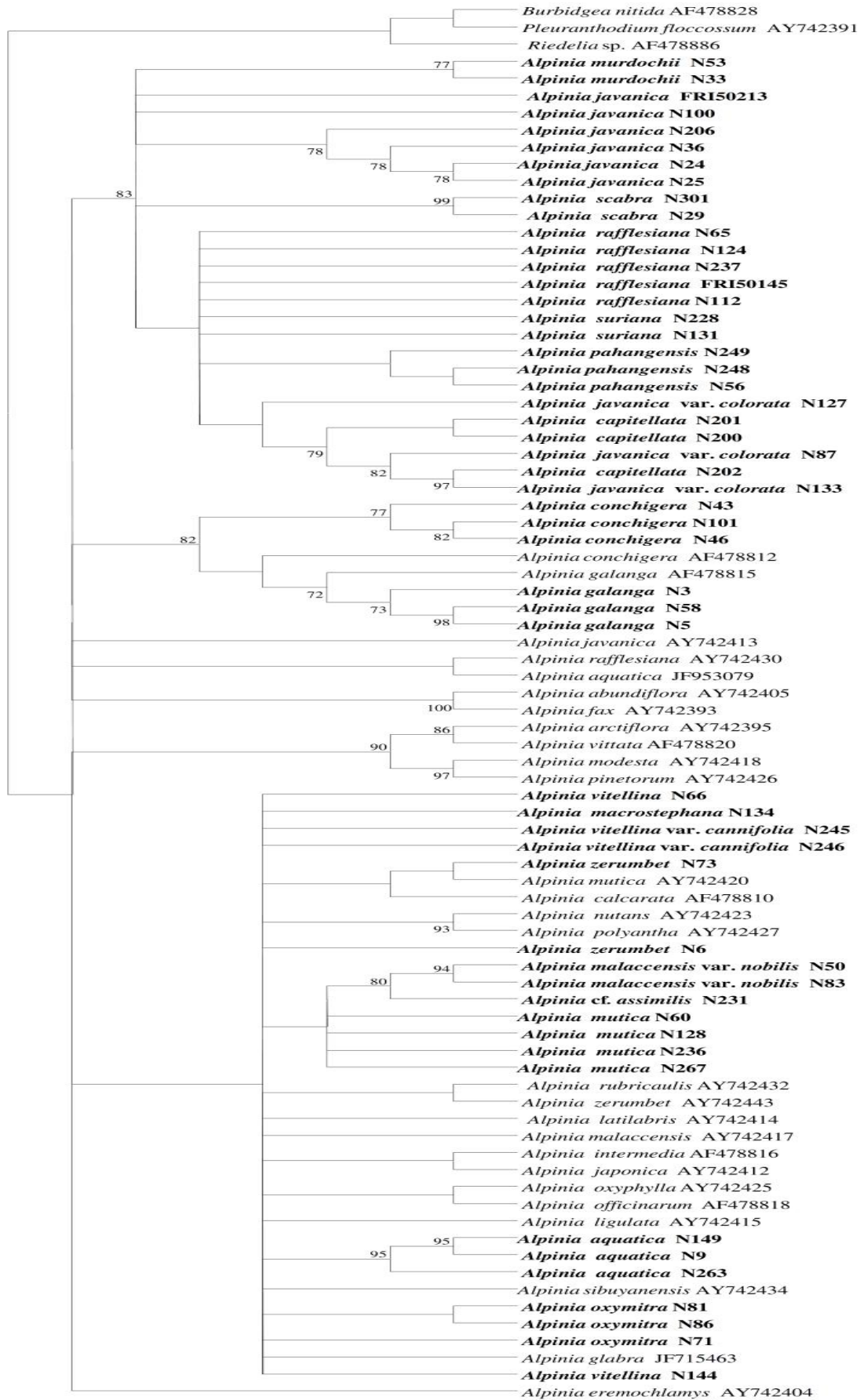
Neighbour-Joining majority rule consensus tree of 21 species of *Alpinia* from Peninsular Malaysia inferred from ITS. Bootstrap values are shown at the branch node.



Maximum Parsimony majority rule consensus tree of 21 species of *Alpinia* from Peninsular Malaysia inferred from ITS. Bootstrap values are shown at the branch node.



Bayesian Inference posterior probabilities consensus tree of 19 species of *Alpinia* from Peninsular Malaysia inferred from *matK*. Bootstrap values are shown at the branch node.



Maximum Parsimony majority rule consensus tree of 19 species of *Alpinia* from Peninsular Malaysia inferred from *matK*. Bootstrap values are shown at the branch node.