

Figure 47: *A. sessilis* 'Red'. Ovular primordia and megasporocyte.

A: Primary parietal cell and sporogenous cell.

B: More than one sporogenous cell is observed.

C: Megaspore mother cell at late prophase and one layer of nucellus is formed (indicated by arrow).



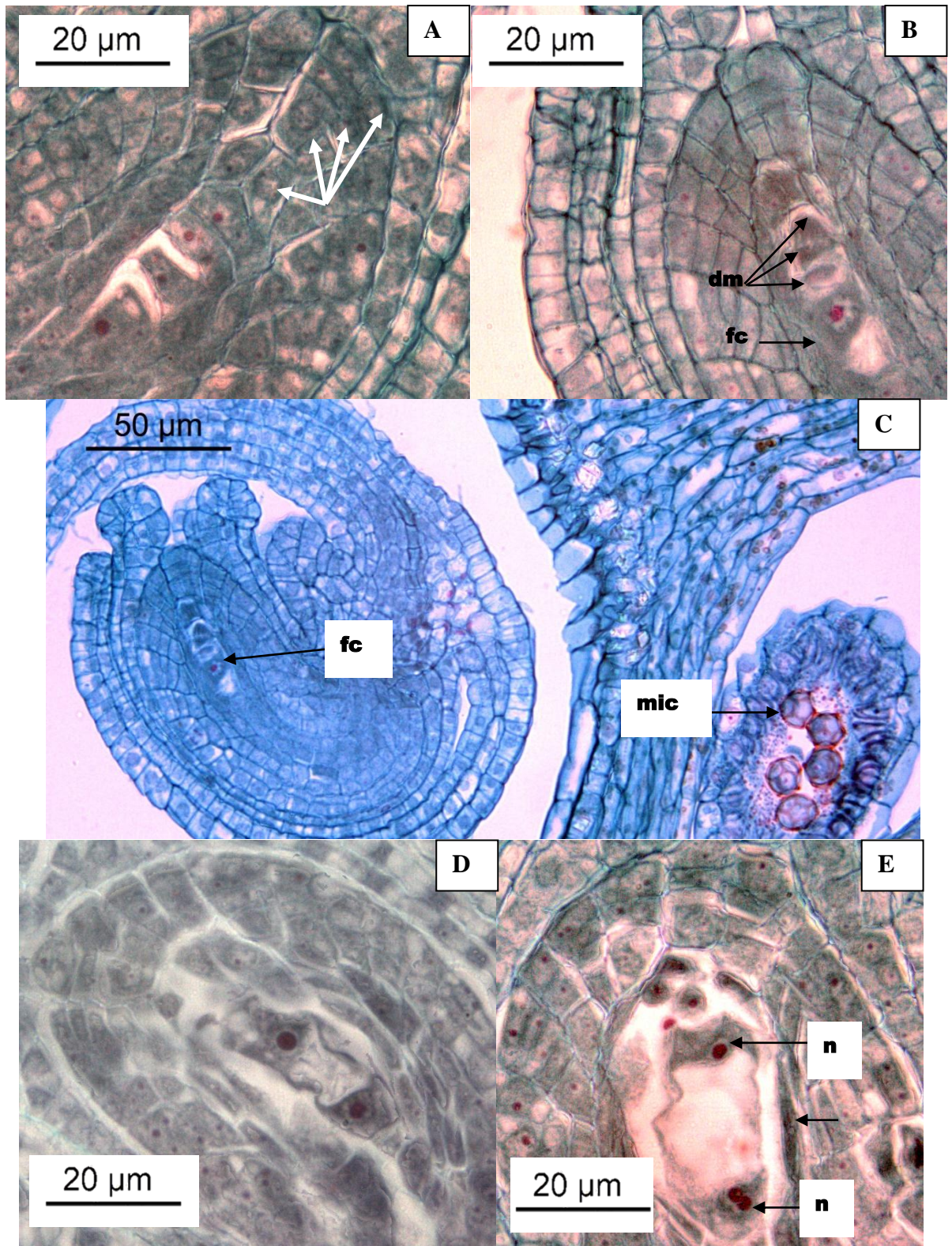


Figure 48: *A. sessilis* (red variety). Megasporogenesis and megagametogenesis.

- A: A linear megaspore tetrad. Four layers of nucellus (indicated by arrows).
- B: The functional megaspore enlarges while the other three megaspores degenerate.
- C: When the embryo sac is at the linear tetrad stage, the anther is at the one-celled microspore stage.
- D: Two-nucleate embryo sac.
- E: Three-nucleate embryo sac. Degeneration of nucellar cells (indicated by arrow).