

Figure 49: *A. sessilis* 'Red'. Mature embryo sac.

A1: Two polar nuclei before fusion.

A2: Three cellular antipodals.

A3: Pear-shaped egg cell. Elongated nucellar cells (indicated by arrows).

B1: Some nucellar cells have degenerated due to the enlargement of the embryo sac (indicated by arrows). The egg cell has not differentiated.

B2: Hooked synergids with conspicuous vacuole under the nucleus (indicated by arrow).



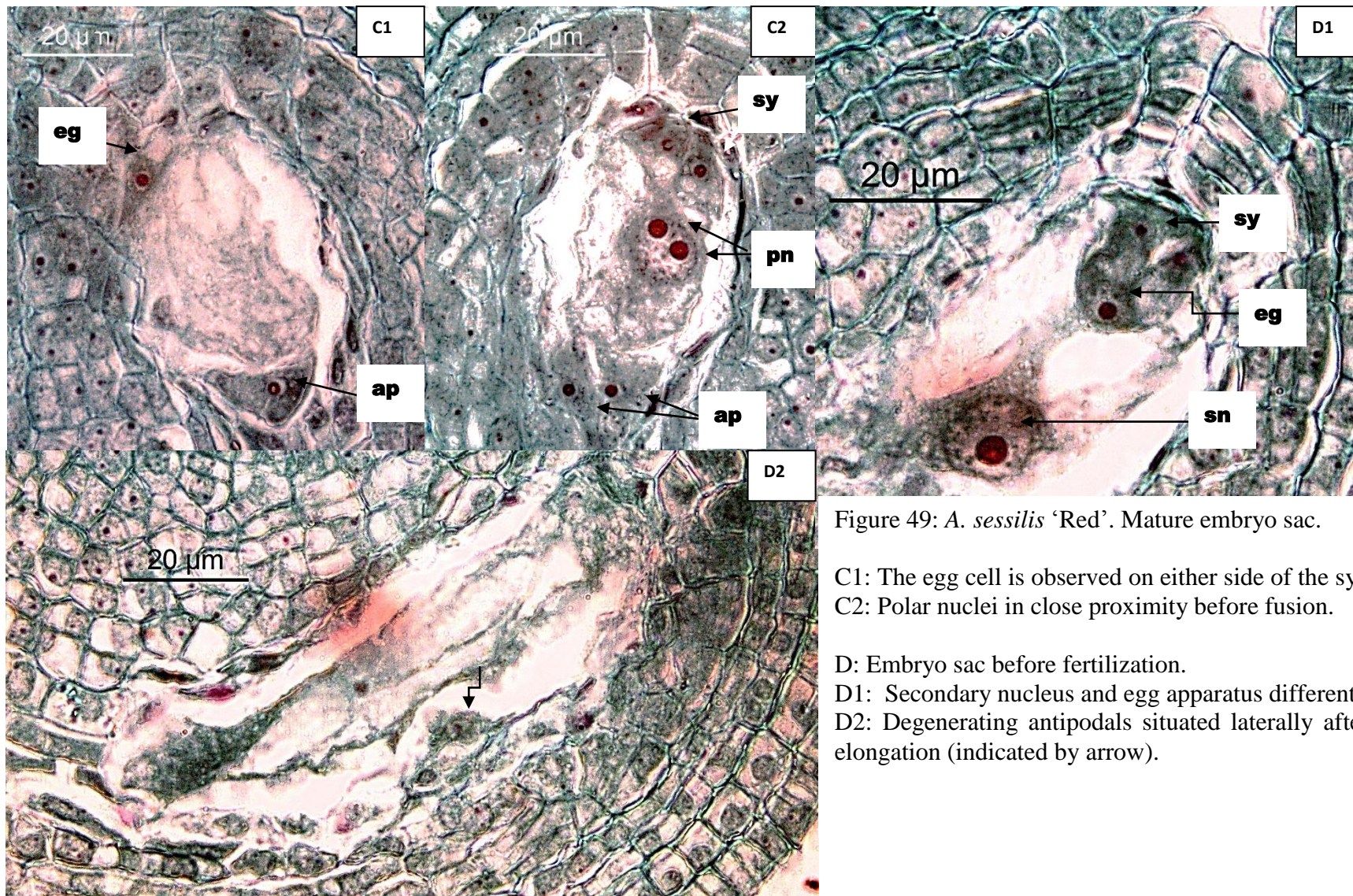


Figure 49: *A. sessilis* 'Red'. Mature embryo sac.

C1: The egg cell is observed on either side of the synergids.

C2: Polar nuclei in close proximity before fusion.

D: Embryo sac before fertilization.

D1: Secondary nucleus and egg apparatus differentiating.

D2: Degenerating antipodals situated laterally after embryo sac elongation (indicated by arrow).