

Figure 93: SEM photomicrographs of *A. sessilis* 'Green'.

A. Polar view.

B. Equatorial view.

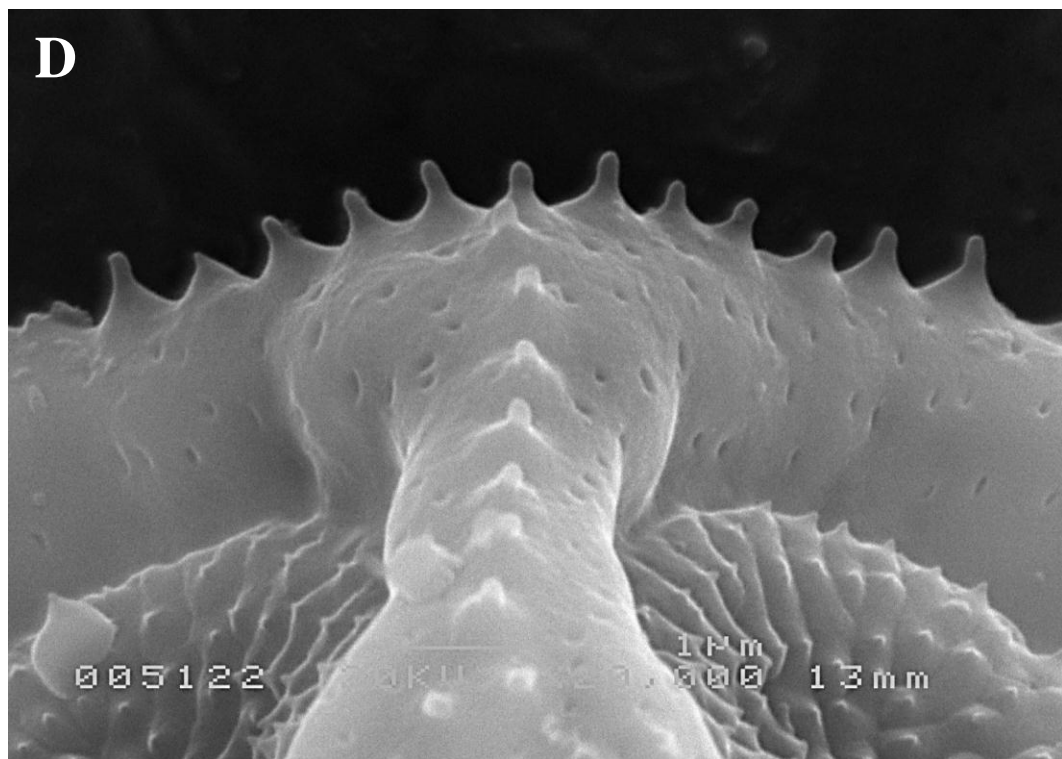
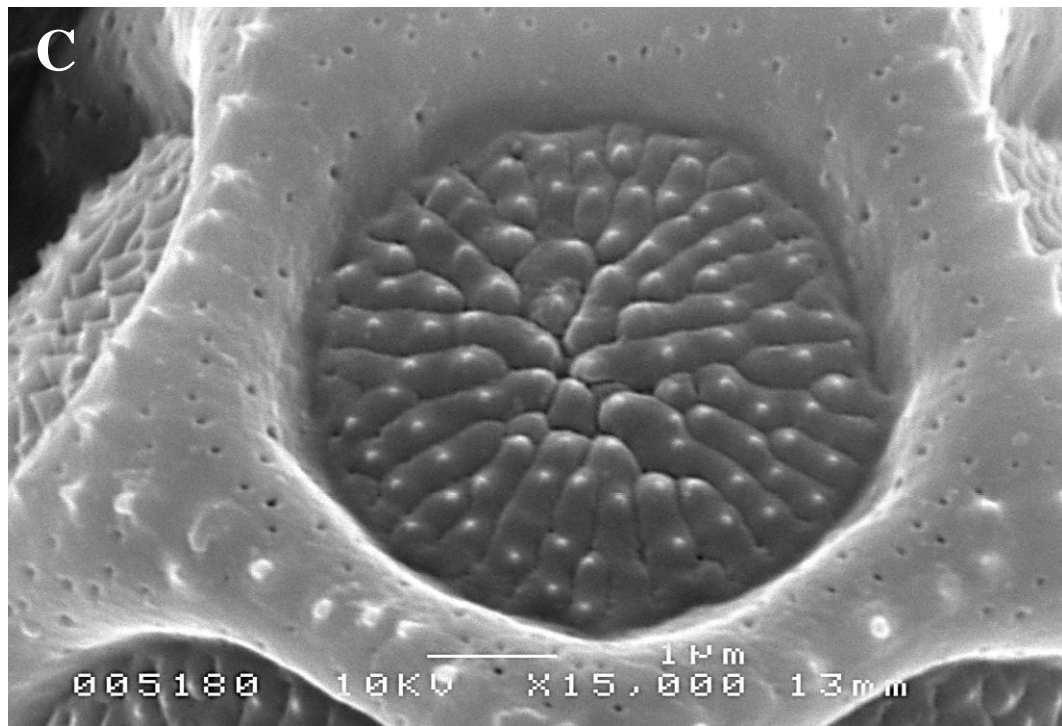


Figure 93: SEM photomicrographs of *A. sessilis* 'Green'.

C. Pore is covered with ecteinous bodies and perforations are distributed unevenly at the mesoporia.

D. Microspines are blunt and conical in shape.

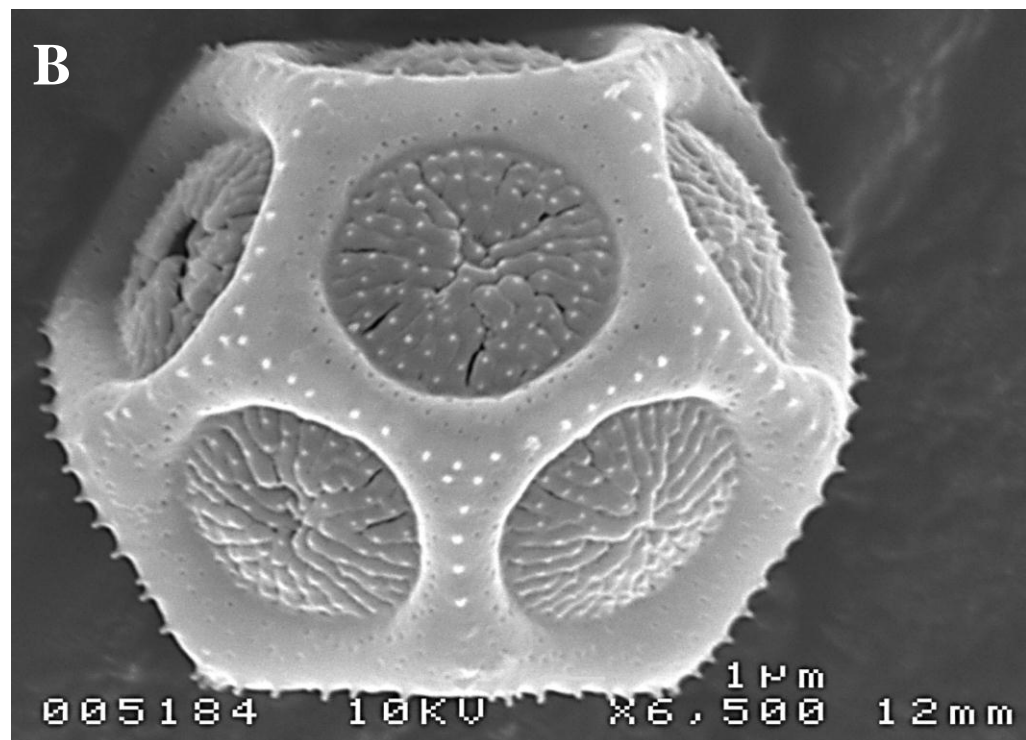
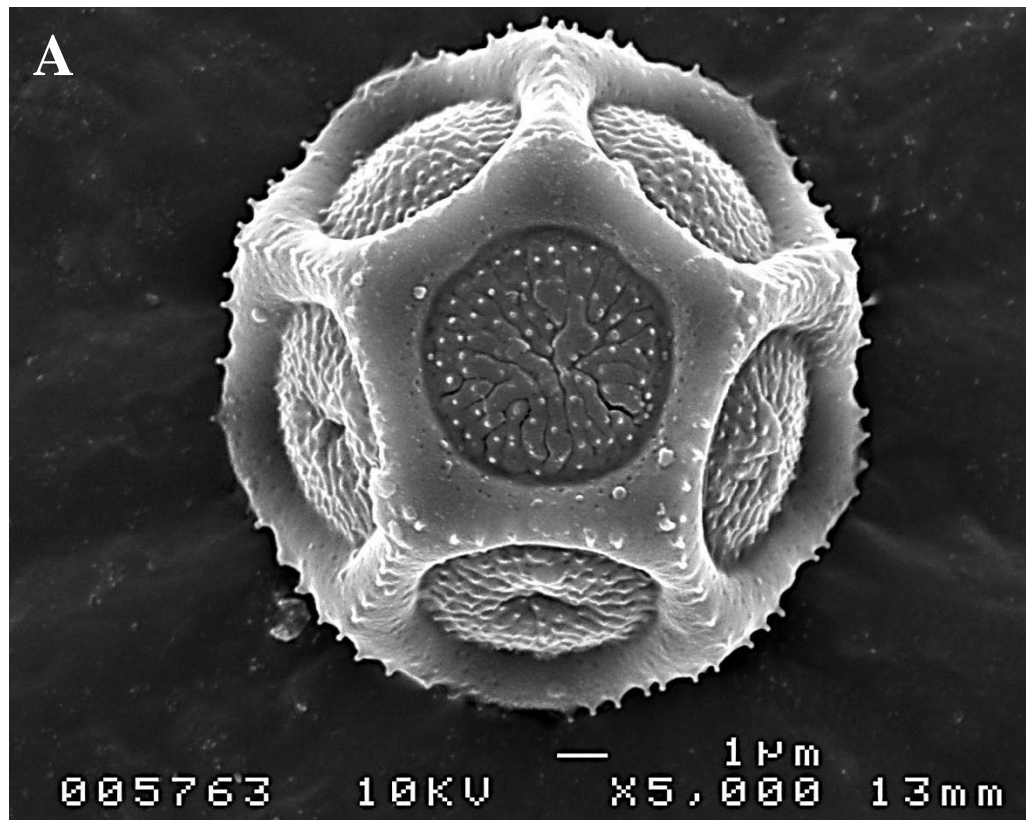


Figure 94: SEM photomicrographs of *A. sessilis* 'Red'.

A. Polar view.

B. Equatorial view.

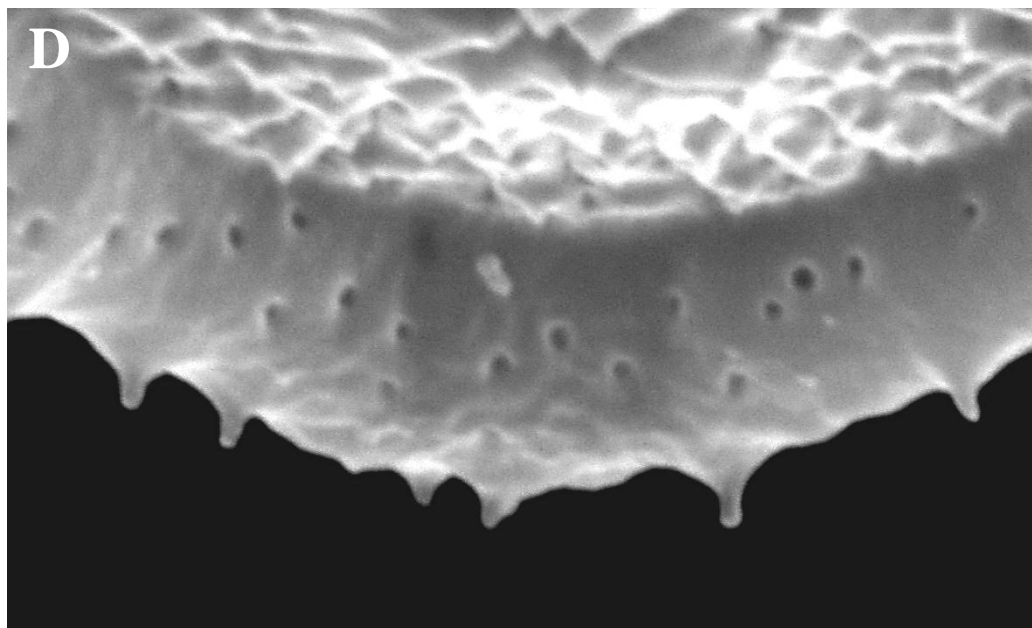
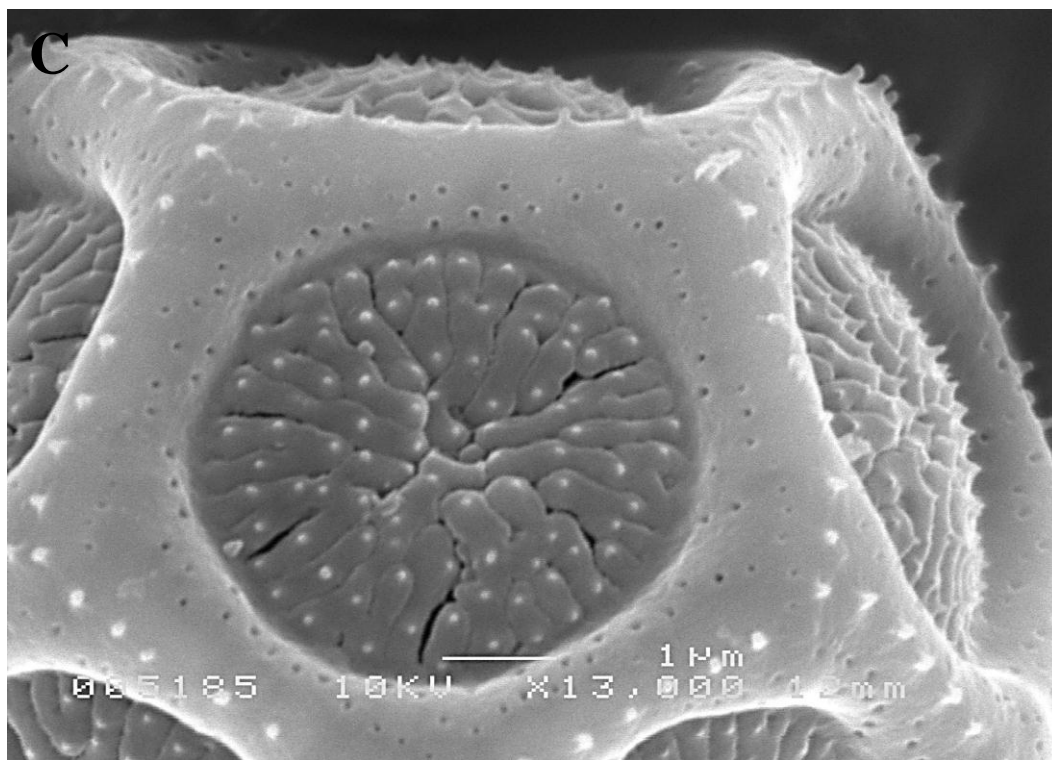


Figure 94: SEM photomicrographs of *A. sessilis* 'Red'.

C. Round pore is situated in a pentagonal face.

D. Microspines are blunt and conical in shape. Scale bar- 2.9cm: 1µm.

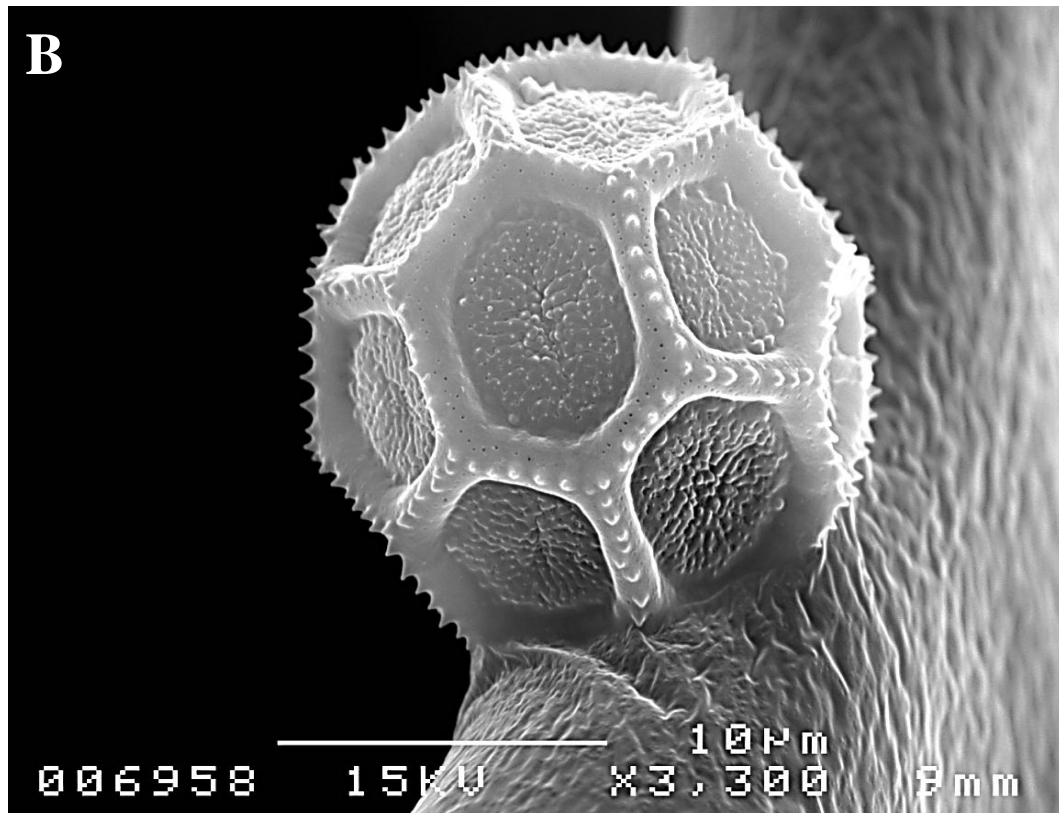
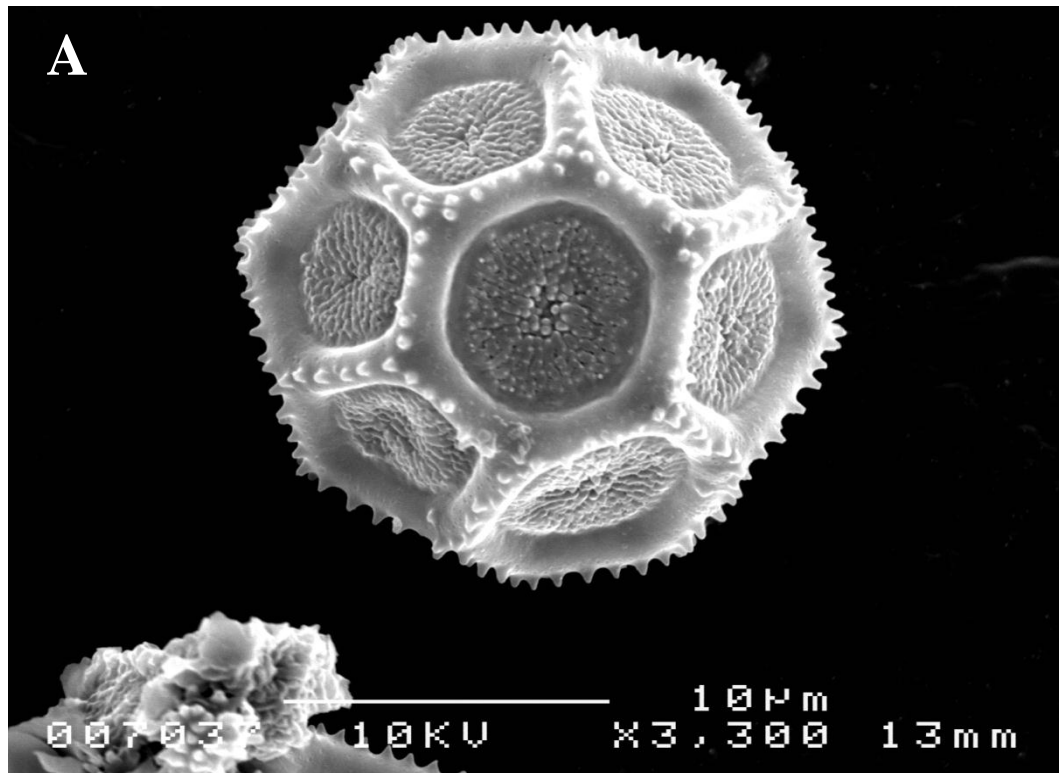


Figure 95 : SEM photomicrographs of *A. paronychioides*.

A & B. Polar view.



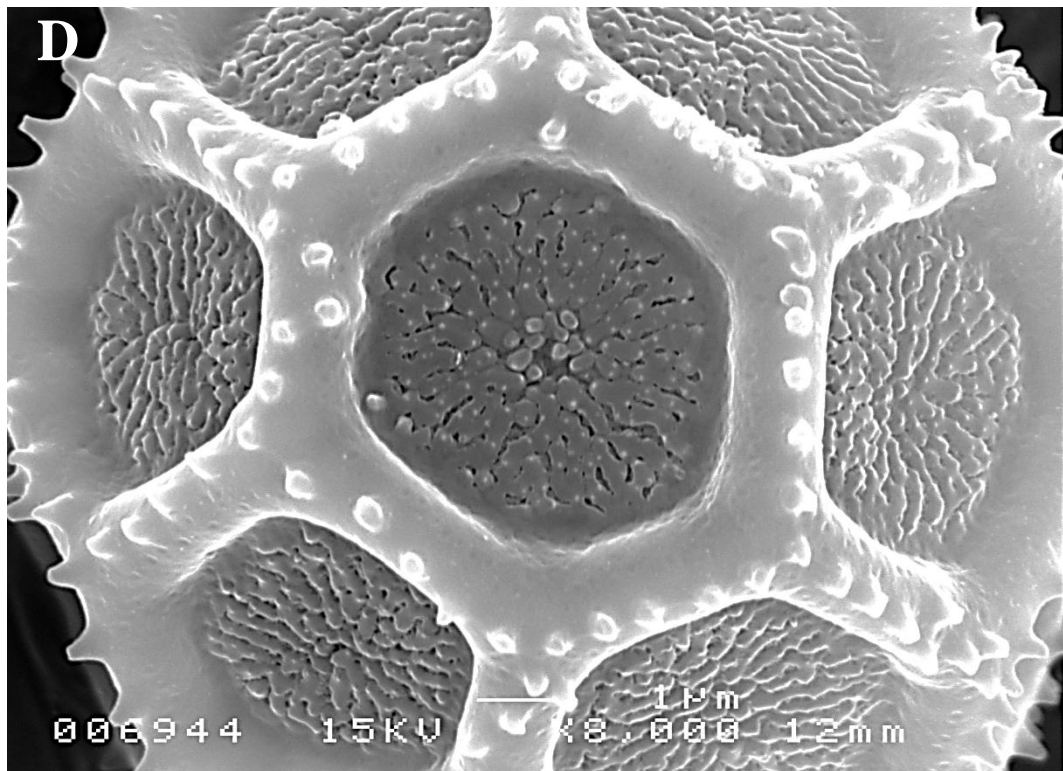
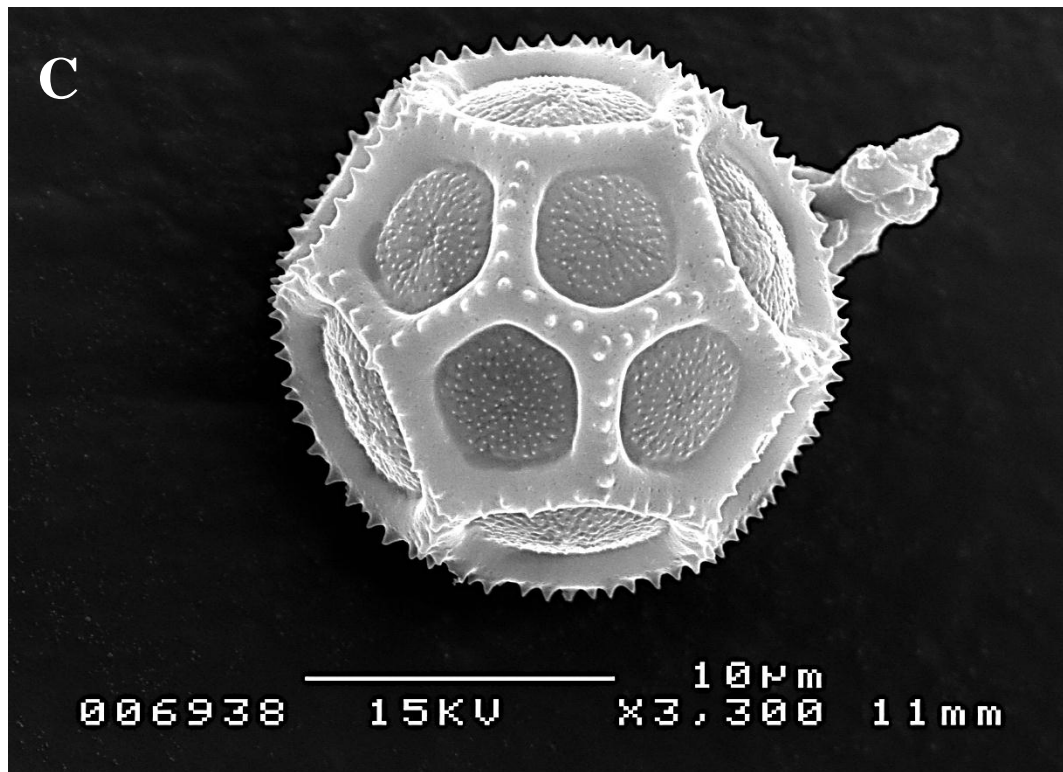


Figure 95: SEM photomicrographs of *A. paronychioides*.

C. Equatorial view.

D. Oval pore is situated in a hexagonal face and is covered by ecteinous bodies.

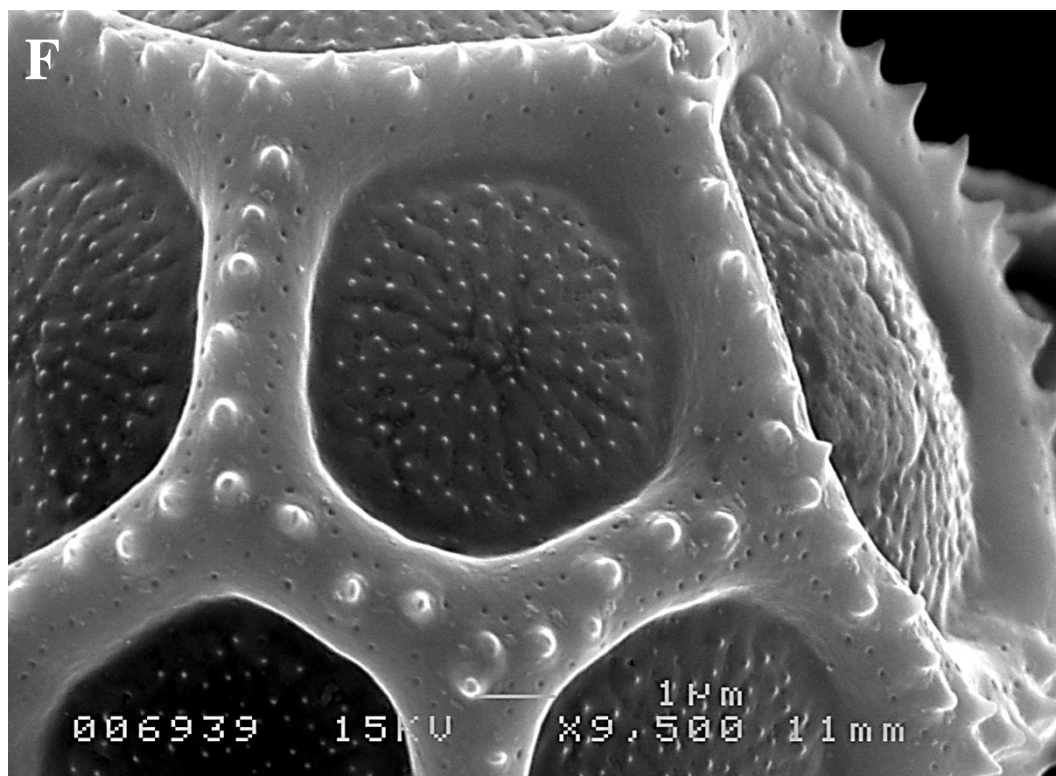
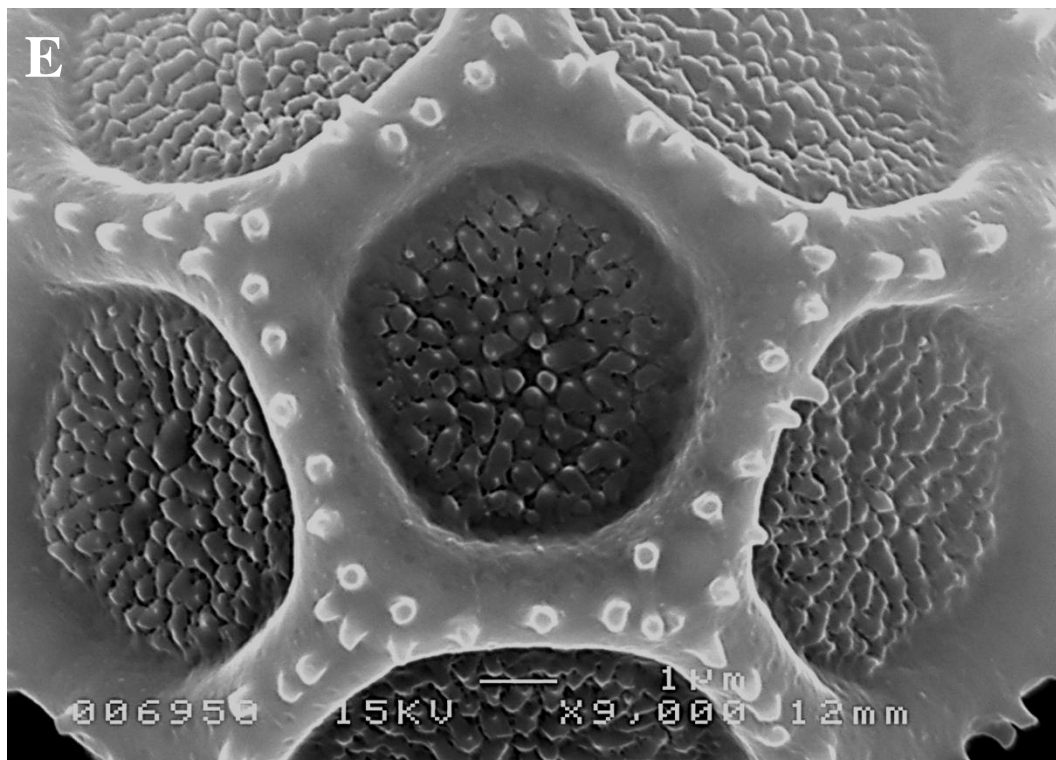


Figure 95: SEM photomicrographs of *A. paronychioides*.

E. Round pore situated in a pentagonal face. Microspines are irregularly arranged.

F. Perforations are distributed along the microspines at the top of the mesoporia.

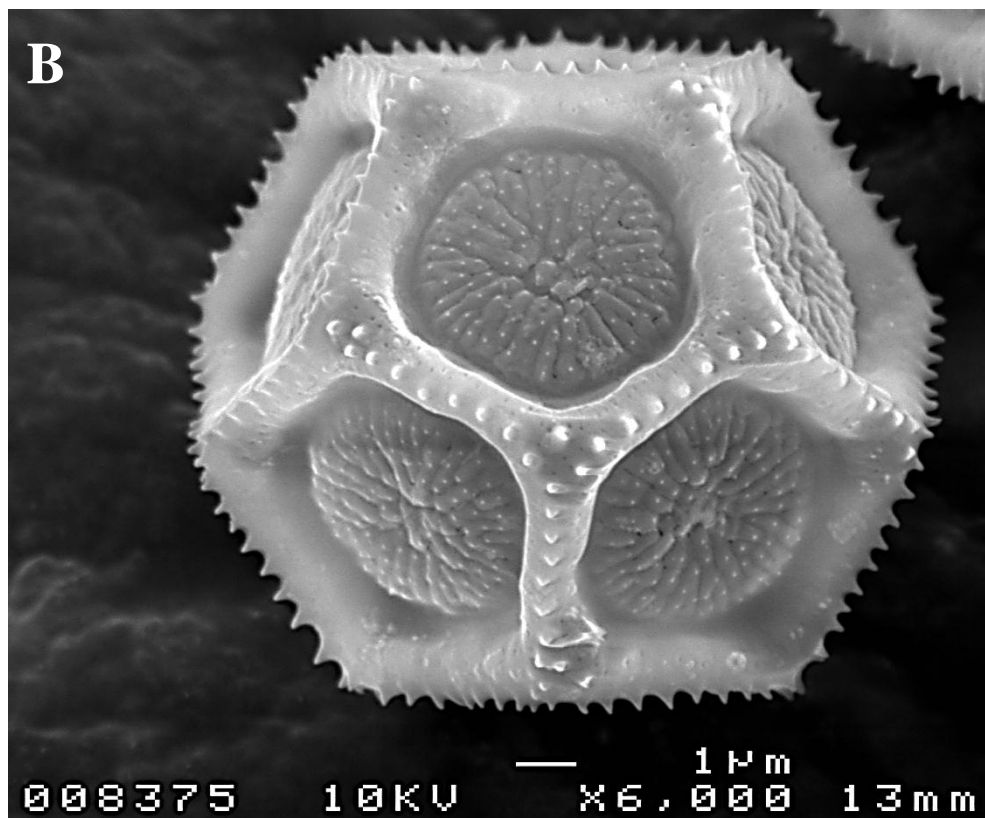
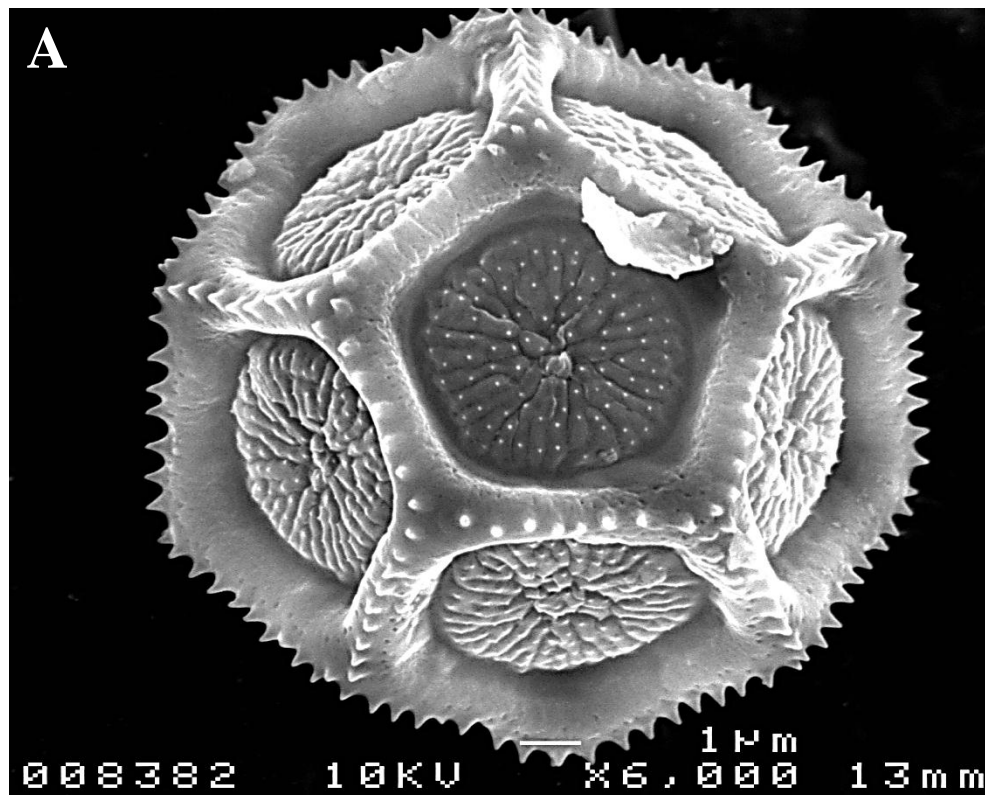


Figure 96: SEM photomicrographs of *A. ficoidea*.

A. Polar view.

B. Equatorial view.



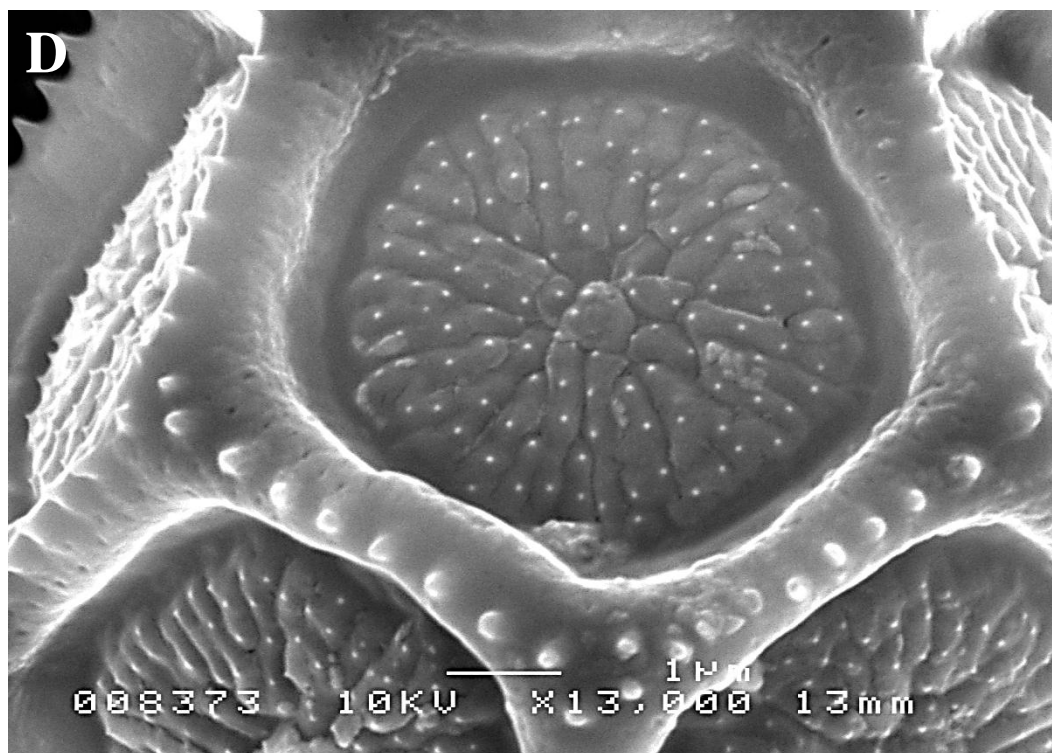
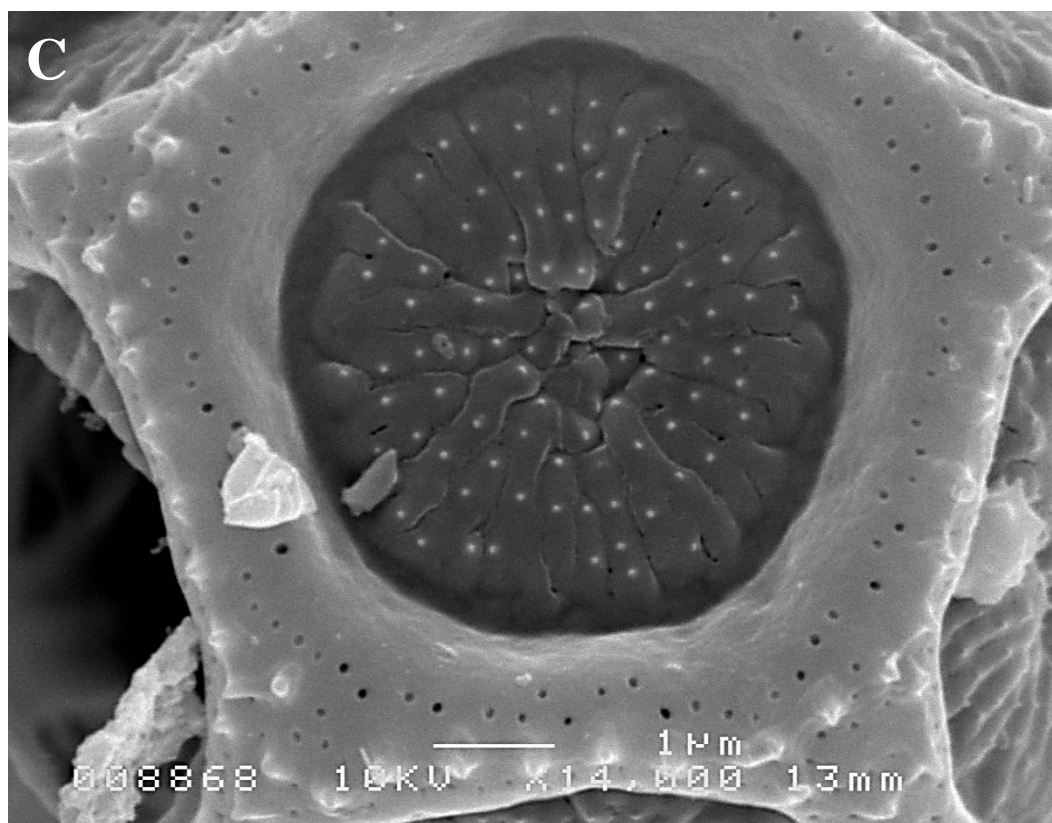


Figure 96: SEM photomicrographs of *A. ficoidea*.

C & D. Round pore is situated in a pentagonal face and is covered with ecteinous bodies.

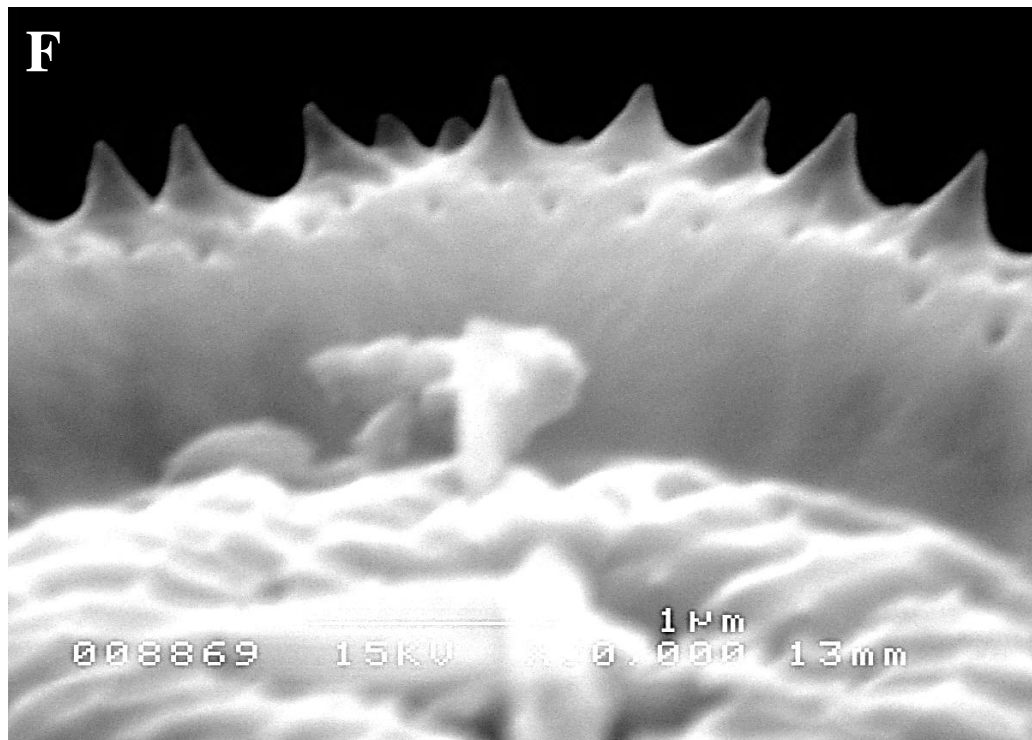
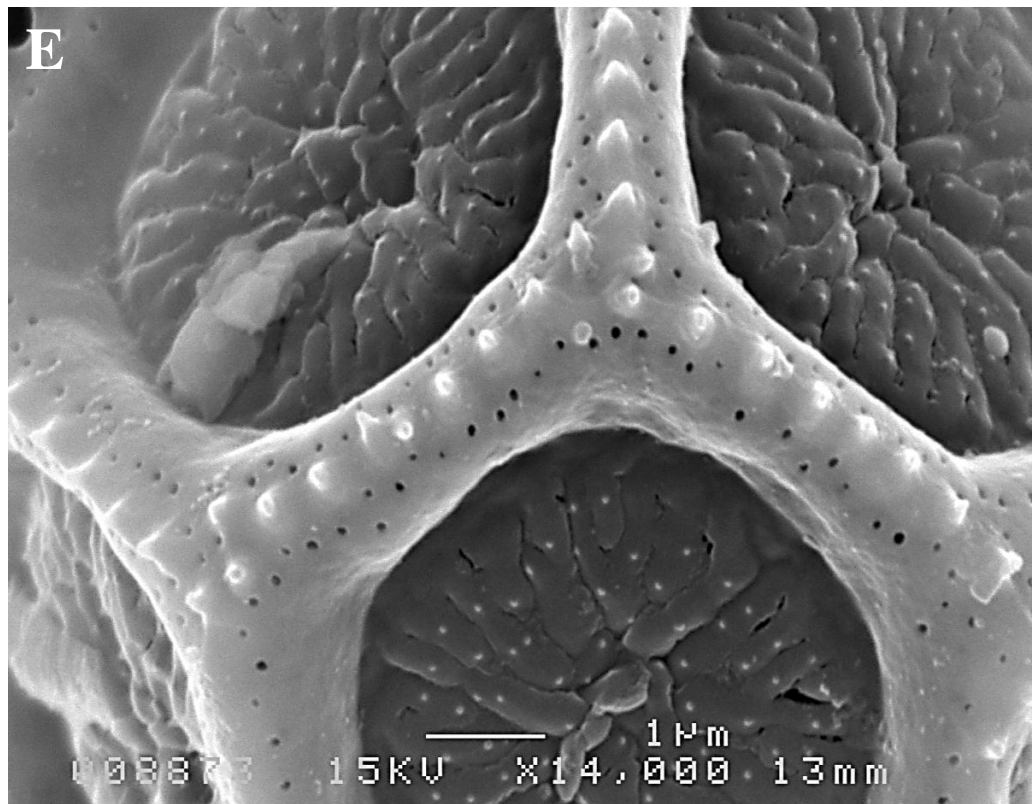


Figure 96: SEM photomicrographs of *A. ficoidea*.

E. Perforations are distributed along the microspines at the top of the mesoporia.

F. Microspines are sharp and conical in shape.