

Figure 97: Pollen germination rate and pollen tube length in different concentration of sucrose after eight hours of incubation in *A. sessilis*.

A: Germination rate.

B: Pollen tube length

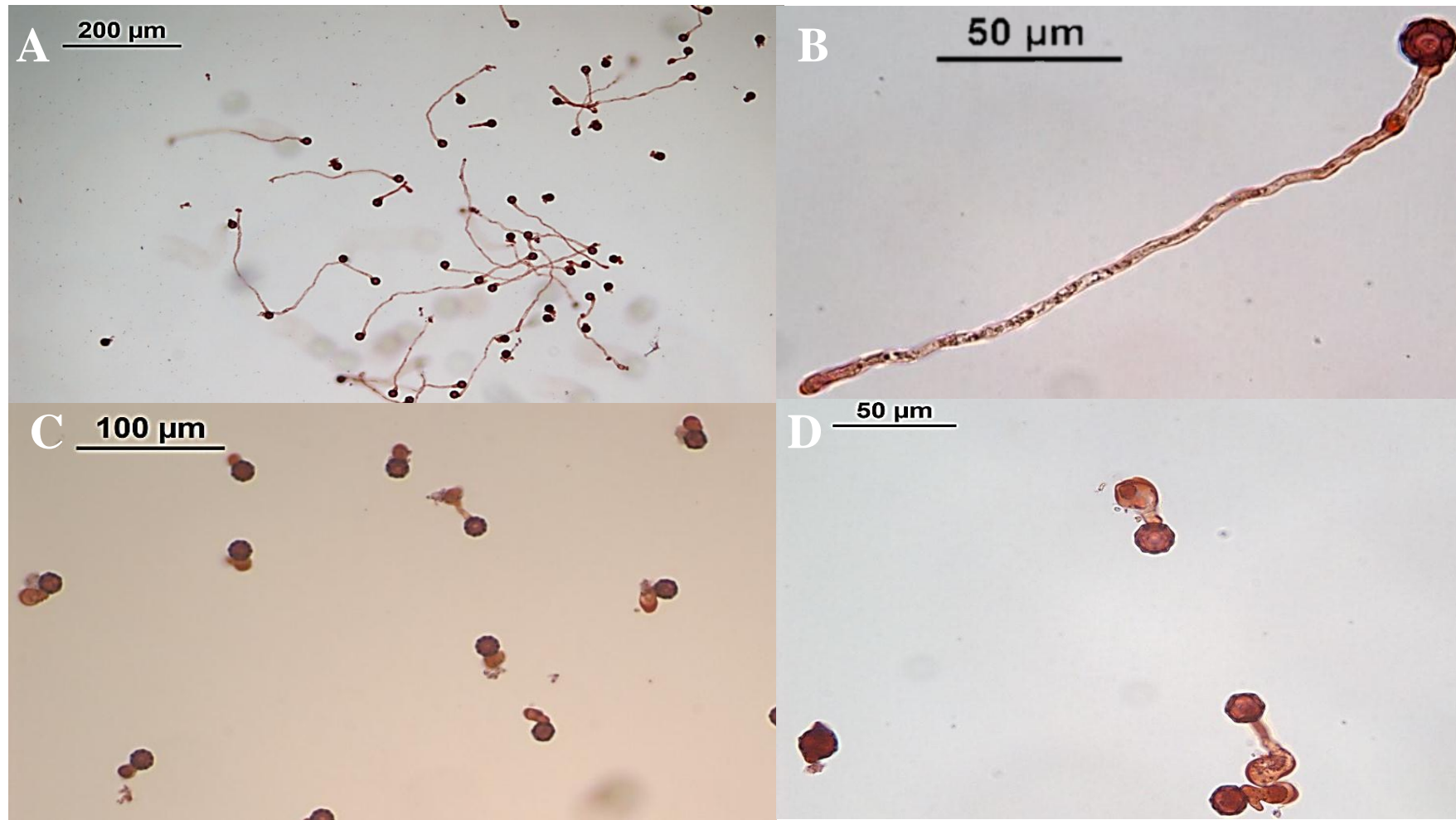


Figure 98: Pollen germination in *A. sessilis*.

A & B: Green leaf form. Mass germination producing normal pollen tubes.

C & D: Red leaf form. Germinated pollen grains with short pollen tubes.



Figure 99: Pollen tube abnormality in *A. sessilis*. A & B: green leaf form; C & D: red leaf form.
 A: Bifurcated pollen tube. B: Pollen tube with coiled end. C: Two tubes from one pollen. D: Protoplasm secreted.