

Figure 100: Summary of fruit set obtained from different pollination experiments in *Alternanthera* species.

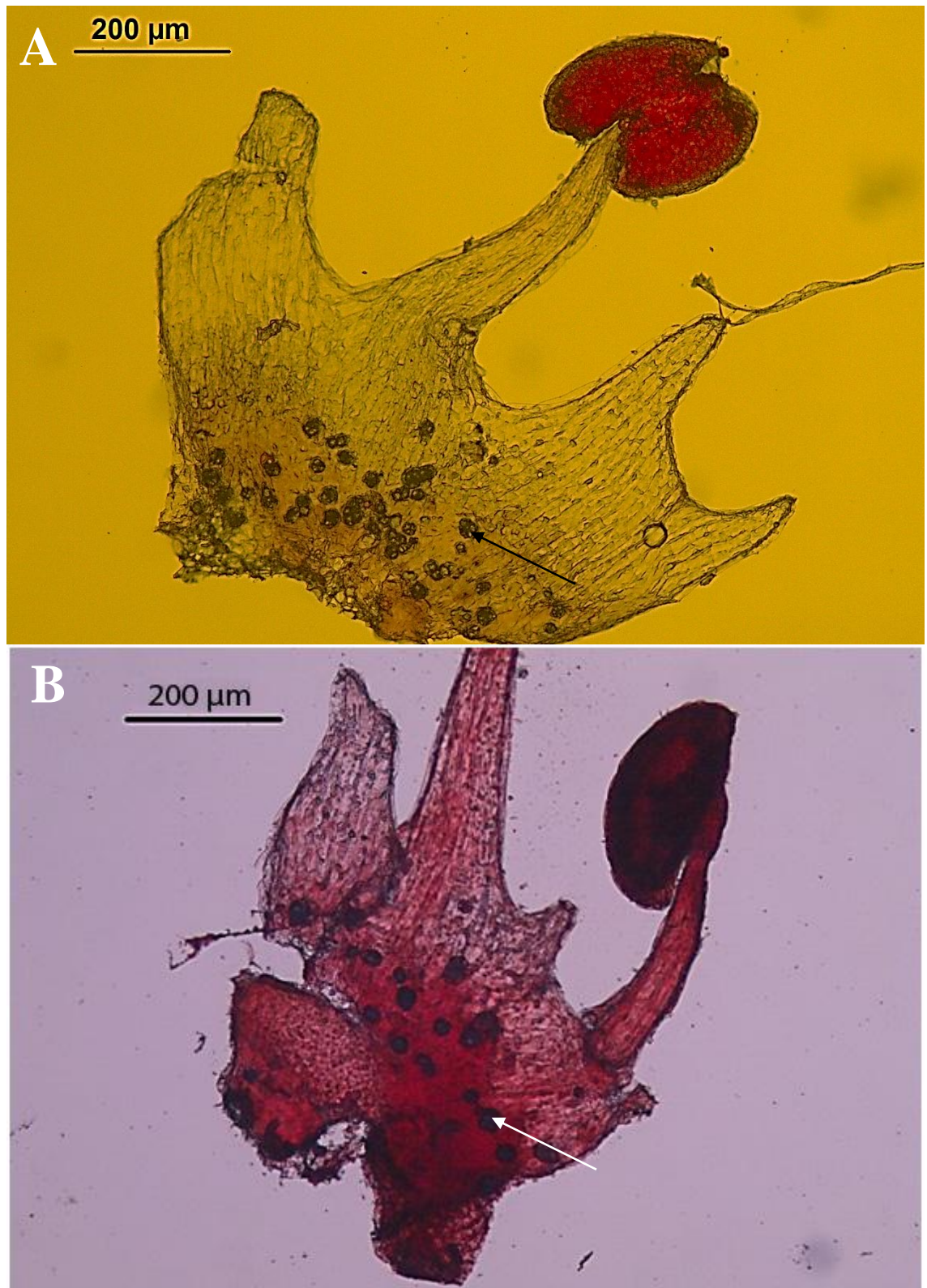


Figure 101: Osmophores of *A. sessilis*. The base of the stamen stained red indicating the presence of osmophores (indicated by arrow).

A: Red leaf form.      B: Green leaf form.

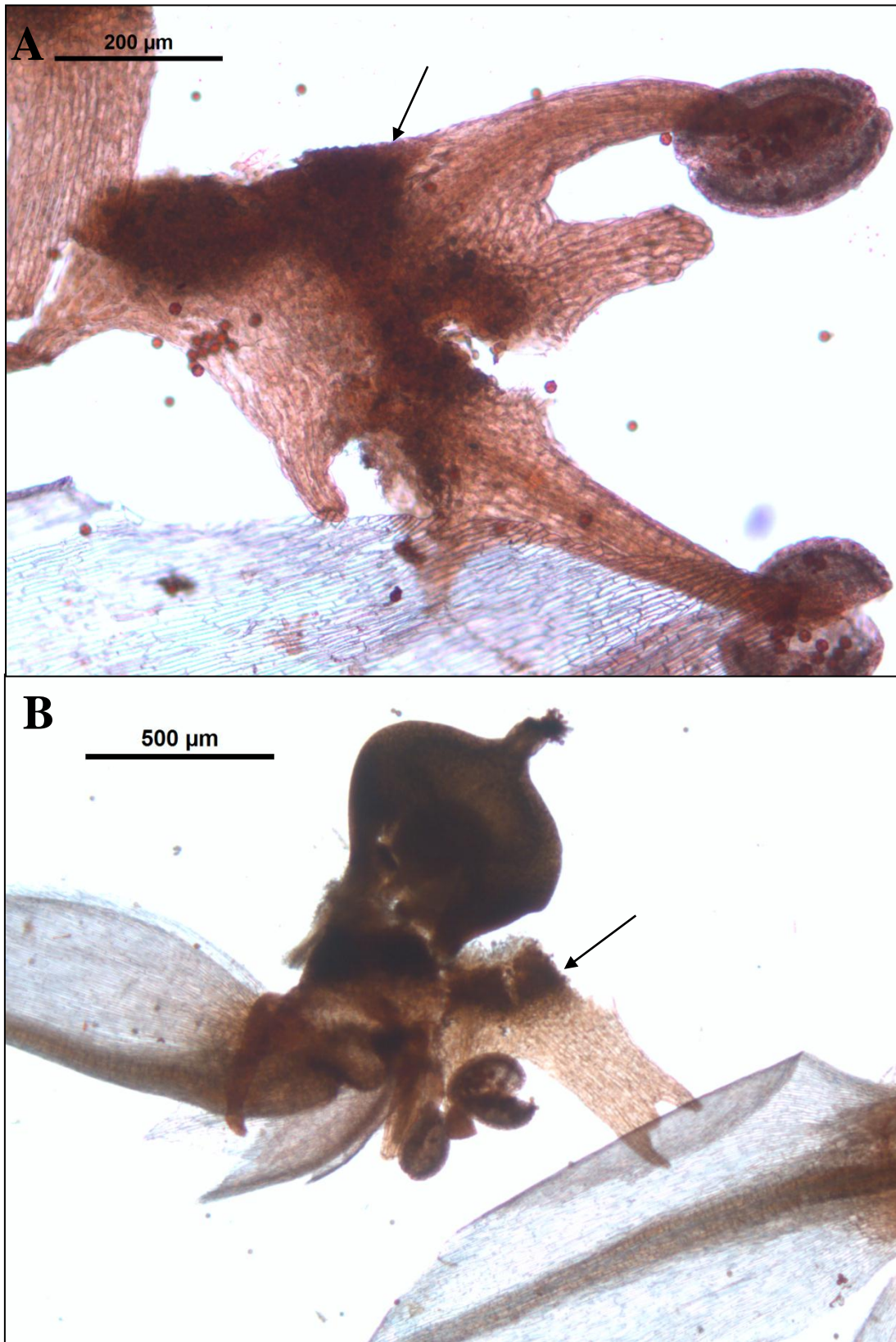


Figure 102: Nectary glands of *A. sessilis*. The base of the stamen stained red indicating the presence of oil globules in nectar (indicated by arrow).

A: Red leaf form.    B: Green leaf form.



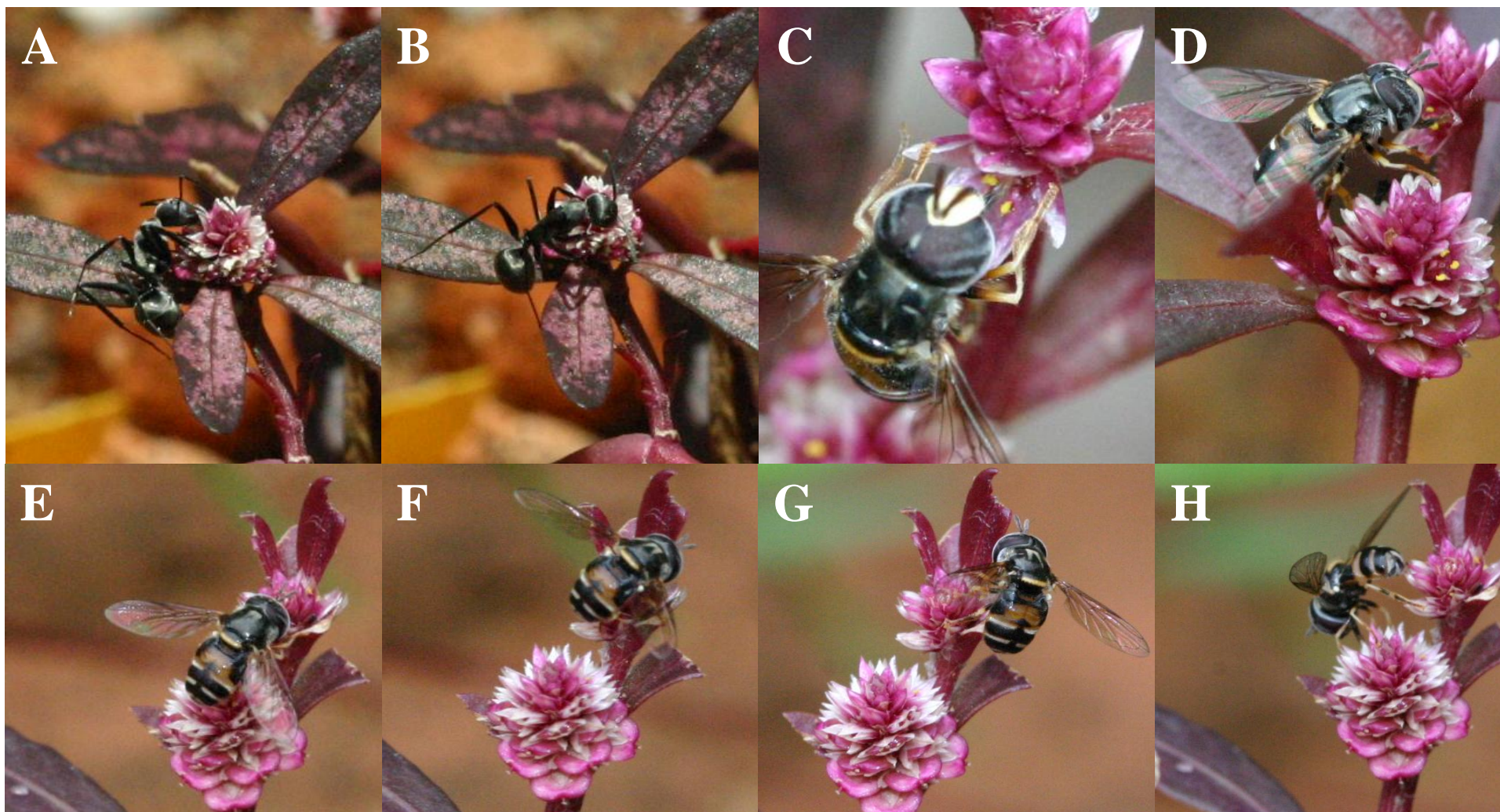


Figure 103: Insect visitors of *A. sessilis* 'Red'.

A & B: Ant searching for nectar from two open flowers in the same inflorescence. C & D: A hoverfly clinging to an inflorescence to collect food.

E–G: Visiting hoverfly is collecting food from two different open flowers in the same plant. H: The hoverfly continues its journey to the next inflorescence.



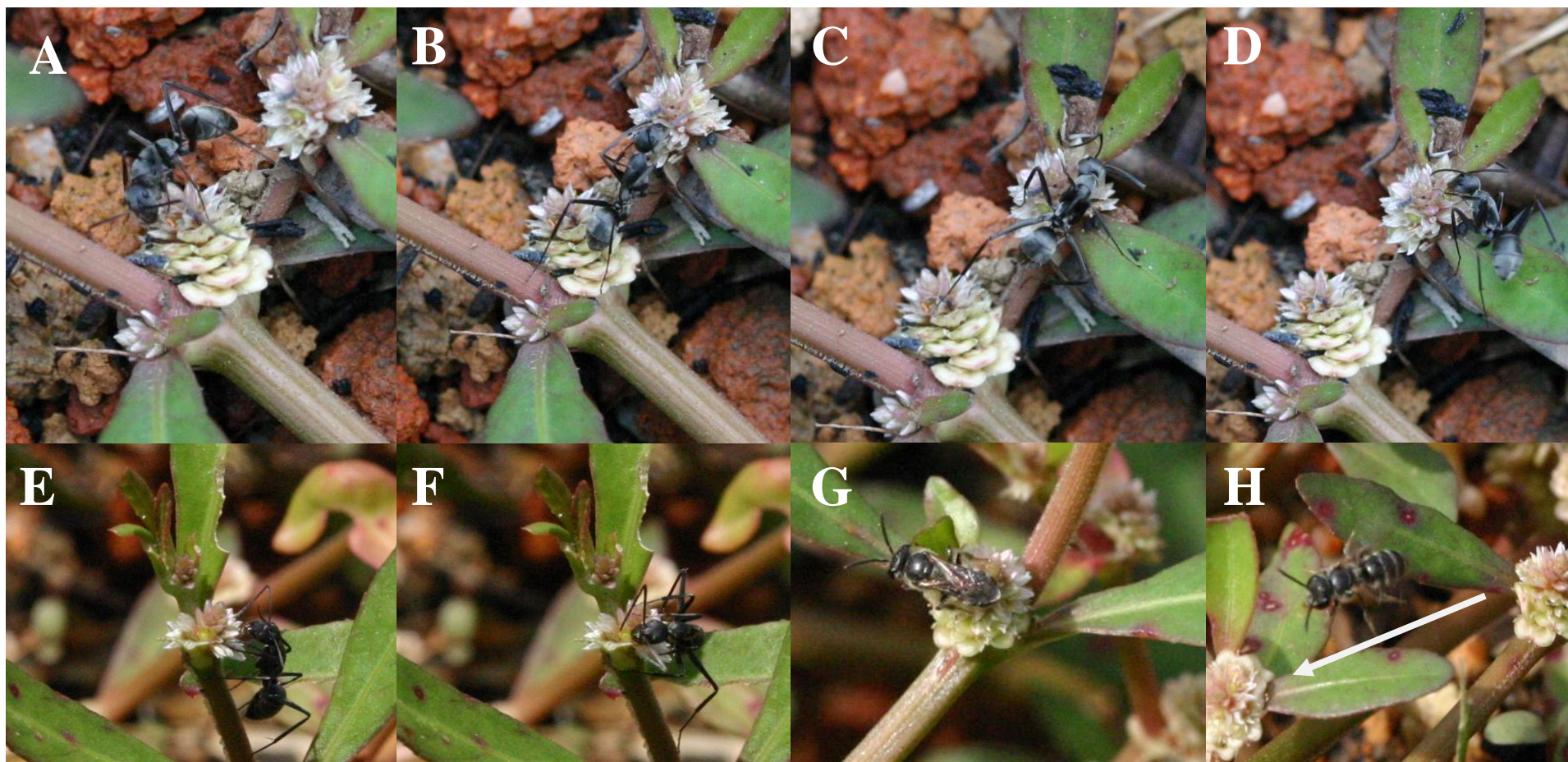


Figure 104: Insect visitors of *A. sessilis* 'Green'.

A–D: Ant searching for nectar from two different inflorescences in the same plant.

E & F: Ant searching for nectar from two open flowers in the same inflorescence.

G & H: Bee foraging from one inflorescence to the next inflorescence in the same plant.