

# Jelingan Manja

Composed by P. Ramlee

Vocal by Saloma

Melody transcribed by KHAIRIL ANUAR BAHARI

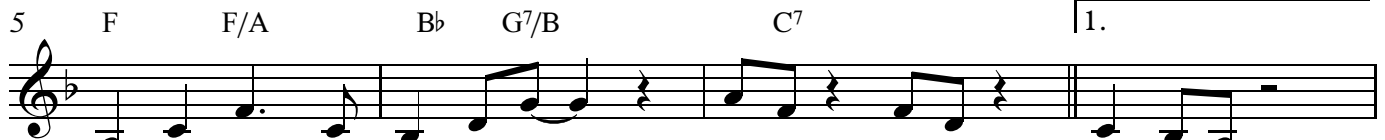
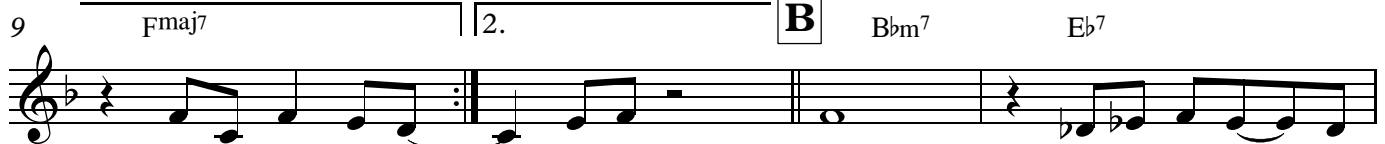
Swing  $\text{♩} = \text{♩} \text{ } \overset{3}{\text{♩}}$  $\text{♩} = 155$ **A**

Gm7 3 C7

Fmaj7

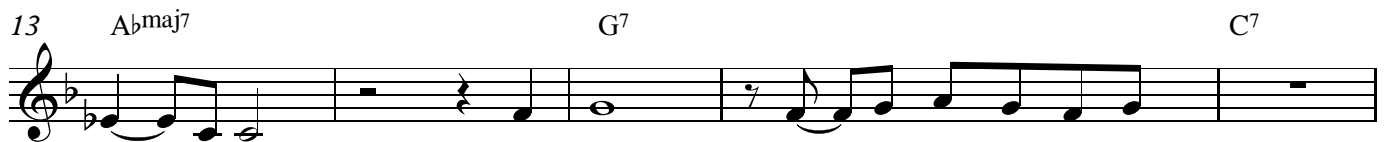


Je - li-ngan man-ja\_\_\_\_\_a

me-nu-suk ke kal - bu\_\_ ku\_\_  
me - na-rik per-ha - ti - an\_\_ ku\_\_me-nam-bah ra - sa cin - ta\_\_\_\_  
da - pat ku mem - ba - yang kan\_\_da-lam lu-buk ji - wa ku  
da - ri ru-ang

la-gak-nya di - a ma - ta-nya

ku ta-hu di - a\_\_ me-



nyin\_ ta\_

da - ri

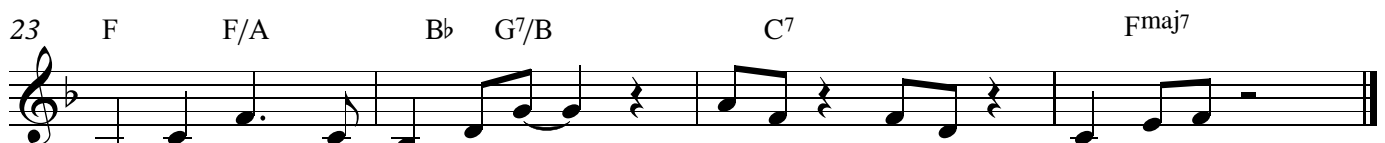
ba - ya-ngan ting-kah-nya ("mengapa bung...)



berpura-pura..)

ji - ka-lau da - ku\_\_

men-da-pat a - ku\_\_ an - nya\_



a - ku kan ba - ha - gi - a\_\_

hi-dup da-lam du - ni - a